

*THE
ARKANSAS FAMILY
HISTORIAN*



VOLUME 57, NUMBER 4

Winter 2019

Arkansas Genealogical Society

P. O. Box 26374

Little Rock, AR 72221-6374

Since 1962

Publications: Publications@agsgenealogy.org
Membership: Membership@agsgenealogy.org
AGS E-Zine: Ezine@agsgenealogy.org
Questions: AskAGS@agsgenealogy.org
Website: www.agsgenealogy.org

Officers and Board Members

President	George Mitchell	Pine Bluff
1 st Vice-president	Thea Walden Baker	Rose Bud
2 nd Vice-president	Russell P. Baker	Mabelvale
Secretary	Ginney Pumphrey	Little Rock
Treasurer	Whitney McLaughlin	Little Rock
Historian	Ann Early	Fayetteville
	Linda Fischer	Stuttgart
	Richard Butler	Little Rock
	Jeanne Rollberg	Little Rock
	Brandon Ryan	Conway
	Glenn Mosenthinn	Searcy
	Chris Stewart	Little Rock
	Rita Benafield Henard	Little Rock
	Sherryl Guthrie Miller	Lonoke
	Johnny Mann	Texarkana
	Jane Wilkerson	Little Rock
	Mary Evans	Little Rock
	Melissa Nesbitt	Texarkana
	Barbara J. Cart	Jonesboro

Editorial Staff

Russell P. Baker, Editor
Thea Walden Baker, Assistant Editor
Glenn Mosenthinn, Assistant Editor
Ann Early, Assistant Editor
Rita Benafield Henard, Assistant Editor

On the Cover: Anthony Sweeney's Capitol Saloon, Texarkana, Arkansas, about 1890. Sweeney is pictured on the left.

ARKANSAS FAMILY HISTORIAN
Published quarterly since 1962

Volume 57 Number 4 Winter 2019

TABLE OF CONTENTS

FROM THE AGS PRESIDENT	2
FROM THE AFH EDITOR	2
SOME OF ARKANSAS' "MAIMED" VETERANS, 1867	4
KELLOGG'S BROAD-AX AND THE BEGINNINGS OF LITTLE ROCK, ARKANSAS	15
CHRISTIAN E. ZOELLER, A QUAIN OLD GERMAN CITIZEN, 1821	16
JEFFERSON COUNTY, ARKANSAS, INDIGENT FAMILIES OF CONFEDERATE SOLDIERS, 1863-1864 <i>Russell P. Baker</i>	16
REV. THOMAS J. PRICHARD, ARKANSAS CONFEDERATE VETERAN	25
JEWISH BURIALS IN PINE BLUFF, ARKANSAS, PART I	26
VANNDALE, CROSS COUNTY, ARKANSAS, 1889-1890	37
STUDENTS OF THE ARKANSAS FEMALE COLLEGE, LITTLE ROCK, ARKANSAS, 1876-1877	38
ARKANSAS GENEALOGICAL QUERIES	42
REVIEWS OF NEW BOOK AND PUBLICATION	43
ARKANSAS ANCESTRY CERTIFICATES	44
INDEX	46
MAP OF ARKANSAS, 1845	<i>(inside back cover)</i>



FROM THE AGS PRESIDENT

As we come to the close of another year, I hope that it has been a good time for you and your family. It has been a good year for the Arkansas Genealogical Society. We had a growth in our membership and a successful Spring Workshop and Fall Conference. As we head into a new year, the AGS board will continue to work hard on your behalf. We are constantly striving to bring you informative, educational and entertaining speakers to our Spring Workshops and Fall Conferences. Our speaker for the 2020 Fall Conference will be Lisa Louise Cook. She is the owner of *Genealogy Gems*, a popular online genealogy audio show. She is also an international genealogy speaker and webinar presenter. I know you will want to make plans to hear Lisa on October 16-17, 2020, in Benton, Arkansas.

If you are a member of the AGS we thank you for your membership and support. If you are not yet an AGS member, we encourage you to consider joining us. As a paid member, you will receive the *Arkansas Family Historian* four times a year, in addition to valuable information and notices about upcoming seminars, workshops, and other events. You can find membership information and forms, a list of our available publications, a place to register for our free monthly eZine, and much more at our website at www.agsgenealogy.org. Visit it often.

On behalf of the entire AGS Board and our members, I want to wish you and your family a very Happy Holiday season and a wonderful New Year. May you continue to have joy in your life and success in your genealogical research.

George Mitchell, President
Arkansas Genealogical Society

FROM THE AFH EDITOR



It is with great pleasure that we present to our readers the Winter issue 2019 of the *Arkansas Family Historian*. Since 1962, the Arkansas Genealogical Society (AGS) has endeavored to bring to our members sources of information on the genealogy of their families and the history of our state. Back files of this publication from 1962-2009 are available free online at agsgenealogy.org/databases/AFHissues.html. Each volume is indexed and filled with often hard to find information.

Although Arkansas is a state much smaller than some of its neighbors, it has left a rather large footprint with regards to the movement of families across the South, especially during the nineteenth and early twentieth centuries. Our state's landscape, varying from swamps in the southeast to mountains in the west and north west, has attracted a wide variety of settlers throughout the years. One truism of Arkansas genealogical research is that migrants to the "Natural State" often settle in areas much like the ones from which they came. For example, mountain farmers from northern Georgia and Alabama tended to settle in the mountains of west and northwest Arkansas, while plantation owners from the tidewater and piedmont of the Carolinas tended to settle in the sand hills of south and southwest Arkansas.

One of the joys of being the editor of this publication is hearing from our readers. Here are a few comments recently received concerning our Fall 2019 issue. One readers commented, "I really learned something from this issue about the Antioch Townships in Hot Spring County. I also enjoyed reading the Civil War letter relating to the experience about the Camden expedition. It was very illustrative." Another reader passed along some comments addressed to the author of one of our articles, "Just read your story about Caleb Brinton in the *Arkansas Family Historian*. Nice job." Another emailed, "There is a lot of good history in your magazine." Feel free to share your comments, suggestions, and criticisms with us. If you are the author of an article that you would like to share with our readers, let us know. Our email address is listed below.

New Arkansas Prior Birth Index Format

One of our most popular publications is the CD of the *Arkansas Prior Birth Index*. This collection of material contains over 550,000 pre-1914 birth records of people born in our state taken from our fifteen-volume set entitled *ARKANSAS PRIOR BIRTHS*. The information from these volumes has been combined into a single database searchable by the birth name, mother's maiden name and county of birth. *Now the index is available on a USB Flash Drive*. This was done because fewer and fewer new computers come equipped with a CD drive. The CDs of this publication are no longer available. The price remains at \$15. Download an order form at <http://agsgenealogy.org/publications/default.html>. The original fifteen-volume set of these volumes is also still available in hard copy. The price is on the order form.

Winners of The AGS 2019 Family History Writing Contest

Each fall the Awards Committee of the AGS searches through of the material published in the *Arkansas Family Historian* from the previous year, looking for outstanding articles to recognize and authors to honor. The first-place winner receives \$150, the second place \$50, and the third place \$25.

Congratulations to the authors and to the articles listed below that were published in 2018. Articles published in the *Arkansas Family Historian* in 2019 will be considered for next year's awards. These winners were recognized at the AGS fall conference in October of 2019. Others are invited to submit articles for possible future publication. It is not necessary to be an AGS member to submit an article. Use the email address below for additional information.

1. First place: Randy Tipton. *BEYOND BEGATS: ENSLAVED LYDIA OPENS WINDOWS ON THE KIN AND CONNECTIONS OF PIONEERING PATRIARCH ANDREW RAMSEY* (*AFH*, Winter 2018 (Vol. 56, No. 4) pp. 4-11.
2. Second place: Chuck Engelberger. *LETTERS FROM AN ARKANSAS UNION CIVIL WAR SOLDIER* (*AFH*, Fall 2018 (Vol. 56, No. 3) pp. 33-37.
3. Third Place: Alvin Black, *ROCK CREEK'S OLD EBENEZER CEMETERY* (*AFH*, Spring 2018, Vol. 56, No. 1) pp. 10-12,

Russell P. Baker, Editor
gobgob3@mindspring.com

SOME OF ARKANSAS' "MAIMED" VETERANS, 1867

The following information comes from the Arkansas State Archives' Small Manuscript Collection, Box 5, Folder 26, Roll MG 00202. The records were donated to the Archives in 1954 by the late Claude Rankin. They contain the names of a number of wounded and disabled Civil War veterans living in Arkansas during 1867, who were entitled to "Artificial Limbs" due to war related injuries. All but one of those listed here were veterans of the Confederate Army.

Part A is an abstract of a portion of the information found in this material. Information from only thirty-one of Arkansas's counties is contained in the collection. It is not known if this information was collected for other counties. Some of these records are complete while other are very fragmentary. As is usual in such records, the names are often difficult to read. Others are marked out. The 1870 U.S. Census for Arkansas was searched for additional information. Part B contains a list of Ashley County "Indigent Families" of deceased veterans. Such records for other counties have not been located in this collection.

Printed on the top of each county's sheet is, "Returns of maimed soldiers of the county of _____ State of Arkansas, Entitled to Artificial Limbs under Section 10, of 'An Act to Provide for the Support of Wounded and Disabled Soldiers, and for the Support of Indigent Widows and Children of Deceased Soldiers, and the Relief of Indigent Families of this State, and to Furnish Artificial Limbs for Maimed Soldiers, and other Purposes named.'"

Other information concerning these veterans is not abstracted here. It includes, where enlisted, when wounded, nature of wound, in what engagement wounded, limb amputated, kind of operation, name of surgeon, date of operation, and a description of the kind of artificial limb needed. Copies of the complete records may be obtained from the Arkansas State Archives in Little Rock, Arkansas. Several names are marked out. CSA=Confederate Military Service.

A. Maimed Arkansas Civil War Soldiers:

County	Name	Age	Rank	Co.	Regiment/Battalion	When Enlisted	Comments
Ashley	Jim Johnson	18	Sergt	K	16 th Arkansas	August 1, 1861	
Ashley	John White Collins	26	Priv.	F	12 th La. Regiment	March 5, 1862	
Ashley	Henry James Bean (?)	28	Priv.	A	3 rd Arkansas Regiment	July 5, 1861	Or Brown
Ashley	Thomas E. Baker	28	Priv.	F	1 st Battalion	March 15, 1862	1870 White Twp., Ashley County
Benton	Thomas Artarbery	34	?		H. K. Rush (?)	Nov. 1, 1861	Very difficult to read
Benton	James W. Griffis (?)	39	?	?	2 nd Fishback (?)	April 1861	Very difficult to read

Calhoun	Matthew W. Pendergrass	32	Priv.		4 th Ark. Regiment	Feb. 8, 1861	
Calhoun	James Brumeley (?)		Priv.	K	4 th Ark. Regiment	July 1861	
Calhoun	Jepatha I. Underwood	44	Priv.		4 th Ark. Regiment	March 1862	
Calhoun	Charles J. Cross	25	Priv.		4 th Ark. Regiment	July 1862	
Calhoun	Philip Bowland	33	Priv.		4 th Ark. Regiment	Jan. 1862	
Calhoun	Zealous Atkins	23	Priv.		Pollocks Regiment	July 1862	
Calhoun	James W. McMurry	33	Priv.		Pollocks Regiment	July 1862	
Calhoun	Johnathan Hoggard	26	Priv.		4 th Ark. Regiment	July 1862	
Calhoun	Moses Johnson	21	Priv.	A	4 th Ark. Regiment	August 17, 1861	
Calhoun	Prayter R. Crockaran	42	Priv.	I	3 rd Ark. Regiment	March 12, 1862	
Calhoun	Francis Forman	58	Priv.	I	3 rd Ark. Regiment	March 12, 1862	
Calhoun	James S. Mitchell	28	Sergt .	G	3 rd Ark. Regiment	April 1861	1870 Franklin Twp, Calhoun County
Calhoun	William J. Cates	22	Priv.		4 th Ark. Regiment	March 5, 1862	
Calhoun	Elisha J. Stricklin	36	Priv.		3 rd Ark. Regiment	July 1862	
Calhoun	James W. Wade	35	Priv.	A	4 th Ark. Regiment	July 1861	
Calhoun	William W. Hill	40	Priv.	A	4 th Ark. Regiment	Sept. 1862	
Calhoun	John R. Lodge	33	Priv.		3 rd Ark. Regiment	June 17, 1861	
Calhoun	Richard I. Slaughter	36	Priv.	A	3 rd Ark. Regiment	June 17, 1861	
Calhoun	Thomas B. Bird	31	Priv.	A	4 th Ark. Regiment	Sept. 1862	
Calhoun	Elias Francis Boyd	31	Priv.	A	Barnetts Battalion	March 6, 1862	

Calhoun	Henry Sleurk (?)	30	Priv.	G	3 rd Ark. Regiment	1861	
Calhoun	Jeptha Turner	32	Priv.		3 rd Ark. Regiment	1861	
Calhoun	Thomas Priddy	27	Priv.	A	4 th Ark. Regiment	1861	
Carroll	James H. Berry	26	Lieut .	E	16 th Arkansas Infantry	Oct. 19	
Clark	Czar Cates	27	Priv.	E	31 th Arkansas Infantry	July 16, 1861	
Clark	Thomas Claten	31	Priv.	H	1 st Miss. Trans Miss. Infantry (?)	April 31, 1861	1870 Greenville Twp., Clark County
Clark	Thomas J. Brown	32 (?)	Priv.	A	Henry Wilcker (?) Artillery	April 21, 1861	
Clark	Joseph Pierce	23	Priv.	B	1 st Arkansas Infantry	April 29, 1861	
Columbia	Thomas G. Chambers	24	Priv.	G	35 th Arkansas Infantry	June 19, 1862	
Columbia	Thomas J. Grimmitt	30	Priv.	D	28 th Louisiana	April 14, 1862	
Columbia	Thomas W. Hudson	29	Sergt .	D	12 th Arkansas Battalion	March 3, 1862	
Columbia	William J. Garrard	30	Lieut .	G	3 rd Trans-Mississippi regt.	June 13, 1862	1870 Georgia Twp. Columbia County
Columbia	William H. Perry	32	Priv.	C	19 th Arkansas Volunteers	Feb. 24, 1862	
Columbia	Thomas H. Easter	(?)	(?)	A	(?)	Aug. 15, 1863	
Columbia	William H. Booth	34	(?)	G	Fisk Arkansas Regiment	March 15, 1861	1870 Boone Twp. Columbia County
Conway	James M. Evans	27	Priv.	I	1 st Mounted Troops, CSA	July 6, 1861	1870 Welborn Twp, Conway County
Conway	John M. Holder	30	Priv.	F	36 th Ark. Regiment, CSA	June 14, 1862	1870 Washing-

							ton Twp, Conway County
Conway	Jesse Douglass	(?)	Priv.	F	36 th Ark. Regiment, CSA	June 14, 1862	1870 Walker Twp, Conway County
Drew	James Jones	20	Capt.	K	3 rd Arkansas Infantry	June 8, 1861	
Drew	Robert F. Hyatt	23	Priv.	C	3 rd Arkansas Regiment	March 1, 1862	1870 Warren Twp., Drew County
Drew	John W. Colquitt	24	Col.		1 st Arkansas Infantry	June 19. 1861	1870 Veasey Twp., Drew County
Drew	David A. White	28	Priv.	H	3 rd Arkansas Regiment	May 30, 1861	
Drew	Luke M. Tiner	28	Priv.	D	3 rd Arkansas Regiment	May 30, 1861	1870 Smith Twp., Drew County
Drew	J. J. Brown	28	Priv.		Drew Battery	Feb. 8, 1862	
Franklin	Jeremiah Henry Coload (?)	19	Priv.	A	Clarks Regiment, C. S. A.	April 15, 1861	
Franklin	Albert Horton McKinney (?)	33	Priv.	I	15 th Regiment CSA	May 30, 1861	
Franklin	Thomas Jefferson Kenedy	26	Priv.	E	Hills Regiment Cav. CSA.	Feb. 21, 1863	
Franklin	George W. Frank	28	Priv.	B	15 th Regiment CSA	June 24, 1861	
Franklin	John J. Pendergrass	42	Priv.	I	Brooks Regiment CSA	May 28, 1864	
Franklin	Squire Boon	36	Col.		Boons 15 th N. W. Arkansas Regiment CSA	July 8, 1861	1870 White Oak Twp.,

							Franklin County
Greene	Henry H. Cole	25	Priv.	F	13 th Arkansas Infantry	July 17, 1861	1870 Clark Twp., Greene County
Greene	Claborn Blenton	22		H	3 rd Confederate	June 20, 1861	
Greene	M. C. Grenbling (?)	27	Sergt .		5 th Arkansas Infantry	June 13, 1861	
Hot Spring	James F. Spurlin	18	Priv.	E	19 th Arkansas Infantry	1862	
Hot Spring	William Williamson	23	Priv.	A	2 nd Arkansas Battalion	Sept 1861	
Hot Spring	John H. Adams (?)	24	Priv.	F	3 rd Arkansas Infantry	June 20, 1861	
Hot Spring	Joseph H. Alexander	34	Priv.	F	3 rd Arkansas Infantry	June 26, 1861 (?)	1870 Fenter Twp., Hot Spring County
Jackson	John Addison (?)	18	Priv.	K	3 rd Arkansas Cav.	July 8, 1861	
Jackson	William M. Ensign	30	Priv.	B	15 th Arkansas Infantry	July 23, 1861	1870 Union Twp. Jackson County
Jackson	J. G. Lenord	31	Priv.	A	8 th Arkansas Infantry	July 6, 1861	
Jackson	William Primrose	32	Corp.	B	25 th Arkansas Cav.	July 22, 1862	
Jackson	W. C. Reece (?)	23	Priv.	G	1 st Arkansas Infantry	May 5, 1861	
Jackson	James B. Waddill	23	Sergt .	G	1 st Arkansas Infantry	1861	1870 Union Twp. Jackson County
Jackson	W. C. Wallace	22	Priv.	E	8 th Arkansas Infantry	August 3, 1861	1870 Union Twp. Jackson County

Jefferson	James Craig	25	Priv.	A	9 th Arkansas Infantry	May 24, 1861	
Jefferson	Richard S. Nance	28	Priv.	A	28 th North Carolina	May 15, 1861	
Jefferson	Samuel Lindsay	27	Corp.	H	9 th Arkansas Infantry	July 25, 1861	1870 Bolivar Twp. Jefferson County
Independence	R. H. Lee	26	Priv.	K	1 st Arkansas Mounted Rifles	June 9, 1861	1870 Barron Twp, Independence County
Independence	Franklin Perin	27	Priv.	H	8 th Arkansas Infantry	Nov. 1, 1861	
Independence	Joseph Munviller	24	Priv.	K	1 st Arkansas Mounted Rifles	June 9, 1861	1870 Batesville Town, Independence County
Independence	J. N. Benton	23	Priv.	K	6th Alabama Infantry	May 12, 1861	
Independence	John F. Booker	29	Priv.	E	7 th Arkansas Infantry	June 16, 1861	1870 White River Twp. Independence County
Independence	Martin Anderson	23	Priv.	F	8 th Arkansas Infantry	June 16, 1861	
Izard	John Adams	28	Priv.	H	9 th Arkansas Infantry	1862	
Izard	Ephraim Jones Jr.	29	Priv.	H	7 th Arkansas CS	1864	
Izard	Samuel Rutherford Smith	33	Priv.	F	Frumans (?)	July 1861	
Izard	Robert Gray	29	2 nd Lt.	C	21 st Arkansas CSA	Oct. 4, 1861	
Izard	James W. McCarty	29	Priv.	A	27 th Arkansas CSA		
Izard	William Garner (?)	30	Priv.	K	21 st Arkansas CSA		
Izard	James J. Ross	37	Priv.	C	2 nd Arkansas CSA		1860 North Fork Twp.,

							Izard County
Lafayette	John J. Evans	32	2 Lt.	A	6 th Arkansas Regiment	May 30, 1861	1870 La Grange Twp., Lafayette County
Lafayette	Samuel J. McDonald	27	Sergt .	C	17 th Louisiana Regiment	Sept. 6, 1861	
Lafayette	Charles M. Norwood	27	Priv.	A	6 th Arkansas Regiment	May 30, 1861`	
Lawrence	Cattlet C. Tiffie (?)		Priv.	A	Col. R. G. Shioln (?) CSA	July 1862	
Marion	Benjamin Stinnett	30	Priv.	C	2 nd Arkansas Cav.	July 4, 1861	1870 Union Twp, Marion County
Mississippi	Bland Williamson	31	Priv.		15 th Arkansas CSA	May 3, 1861	1870 Monroe Twp, Mississippi County
Mississippi	Thomas J. Williams (?)	27	2 nd Lt.	E	15 th Arkansas Regiment CSA	July 23, 1861	
Mississippi	Levi Hamilton	21	Priv.	B	2 nd Arkansas Regiment Mounted	May 10, 1861	1870 Monroe Twp, Mississippi County
Monroe	James Johnson	24	Capt.	I	5 th Arkansas Infantry	July 8, 1862	
Monroe	James H. Hopkins	34	Sergt .	B	9 th Arkansas Infantry	Nov. 18, 1862	
Ouachita	James F. Ritchie	27	Capt.	B	8 th Arkansas Regiment CSA	June 9. 1861	1870 Liberty Twp., Ouachita County (?)
Ouachita	Newton R. Tribble	26	1 st Lt.	K	6 th Arkansas Regiment CSA	June 1, 1861	1870 Marion Twp., Ouachita County (?)

Ouachita	George R. Jeffreys	25	Priv.	D	1 st Arkansas Regiment CSA	Feb. 22, 1861	1870 Bridge Creek Twp., Ouachita County
Perry	Benjamin L. Leach	29	Priv.	H	10 th Arkansas Regiment CSA	July 27, 1861	
Pope	George Washington Berryman	32	Capt.	D	21 st Arkansas Infantry CSA	Dec. 3, 1861	1870 Illinois Twp., Pope County
Pope	Moses Alexander Haralson	24	Sergt	B	2 nd Arkansas Mounted Infantry	July 25, 1861	1870 Wilson Twp., Pope County
Prairie	William Thomas Blakemore	26	Priv.	B	1 st Arkansas Mounted Rifles	April 28	1870 White River Twp., Prairie County
Prairie	John Brock Williams	32	Priv.	B	1 st Arkansas Mounted Rifles	April 28	
Prairie	Isaac Newton Hedessth (?)	44	(?)		6 th Infantry (?)	Aug. 28	
Prairie	William Nathan Bray	24	(?)	A	23 rd (?)	May	
Prairie	Eleazer G. Green	29	(?)	H	25 th Arkansas Infantry	March 11	1870 Richwoods Twp., Prairie County
Prairie	Jacob R. Gray	39	Priv.	C	2 nd Arkansas Riflemen	Aug. 23	1870 Lonoke Twp., Prairie County
Prairie	Samuel W. Austin (?)	27	Priv.	G	6 th Tennessee Infantry (?)	June 23	
Pulaski	Frank. S. Vaughan	23	Priv.		Woodruff's Battalion	Jan. 1862	
Pulaski	William A. Ellis	25	Priv.		Churchills Regiment	July 1861	1870 Little Rock

							Town, Pulaski County
Pulaski	Thomas C. Scott	31	Priv.	C/ D	3 rd Arkansas Cav.	June 16, 1861	1870 Little Rock Town, Pulaski County
Pulaski	John W. Jones	24	Priv.	L	13 th Tennessee Cav.	March 30, 1864	1870 Caroline Twp., Pulaski County (?)
Pulaski	Richard F. Baldwin	28	Lieut .	F	1 st Arkansas Mounted Rifles	Sept. 1, 1861	
Pulaski	Joshua S. Simmons	22	Priv.		9 th Arkansas	July 25, 1861	
Randolph	James Henry (?)	30	Priv.	H	1 st Arkansas Regiment	July 3, 1862	
Randolph	Dan C. Moore Jr.	34	Priv.	F	7 th Arkansas Regiment	June 1861	
Randolph	Rufus H. Black	30	1 st Lt.	A	25 th Arkansas Infantry	June 1861	
Randolph	William Hill	36	Priv.	B	Col. Reeves Regt.		1870 Demun Twp., Randolph County
Saline	J. C. Ewing	36	Corp.	K	5 th Arkansas Infantry	July 8, 1861	
Saline	John A. Lokey	32	Priv.	B	25 th Arkansas Infantry	March 5, 1861	
Saline	W. W. Leather- wood	35	Priv.	K	2 nd Arkansas Infantry	May 8, 1862	1870 Union Twp., Saline County
Saline	R. F. Sweeten (?)	26	Priv.	E	1 st Arkansas Infantry	April 26, 1862	1870 Benton Town, Saline County
Saline	John G. White	30	Priv.	E	1 st Arkansas Infantry	Feb. 20, 1862	
Saline	Charles F. Moore	41	Priv.	B	Col. Crawfords Regiment	May 14, 1863	

Saline	Thomas J. Lee	20	Priv.	H	2 nd Arkansas Infantry	June 18, 1861	
Saline	John Laster	30	Priv.	B	25 th Arkansas Infantry	March 1, 1862	
Sebastian	Dudley Milam	40	Capt.	B	Gunters Cav.	March 1863	1870 Center Twp., Sebastian County
Sebastian	Turner Smith	31	Priv.	A	61 st Tennessee Infantry	Oct. 1862	
Sebastian	T. G. Barnes	28	Priv.	A	Kings and Fagans Brigade		1870 Sugar Loaf Twp., Sebastian County
Sebastian	William Yandle	34	Priv.	D	34 th Regiment Henthorns Brigade		1870 Sugar Loaf Twp, Sebastian County
Sebastian	Siemen Holmes (?)	27	Priv.	F	31 st U. S. Colored Troops	1863	Union Army
Sebastian	Jeremiah Calvert	22	Priv.				1870 Big Creek Twp. Sebastian County
Union	Perry E. Lewis	29	Priv.	G	3 rd . Arkansas CSA	June 2, 1861	
Union	Robert M. Isan (?)	27	Priv.	G	3 rd . Arkansas CSA	June 2, 1861	
Union	Benjamin S. Baley	25	2 nd Lt.	A	9 th Arkansas CSA	July 25, 1861	
Union	William F. Pool (?)	38	Priv.	G	19 th Arkansas CSA	March 12, 1862	1870 Lapile Twp. Union County
Union	James M. Baskin	22	Priv.	G	9 th Arkansas CSA	May 1, 1863	
Union	James M. Collaway	22	Priv.	G	9 th Arkansas CSA	July 25, 1861	
Union	Leonard A. Trimble	35	Priv.	G	9 th Arkansas CSA	May 10, 1862	1870 Lapile Twp. Union County

Van Buren	James B. Norrell	25	Priv.	D	31 st Arkansas Infantry CSA	July 28, 1864	
Van Buren	Lafayette Lovel	25	Priv.	C	10 th Arkansas Infantry CSA	May 27, 1863	1870 Grigg Twp. Van Buren County
Van Buren	Henry J. Gardner	28	Priv.	F	16 th Arkansas Infantry CSA	June 4, 1863	
Woodruff	James M. Crossett	21	Priv.	G	8 th Arkansas Infantry	July 6, 1861	
Woodruff	Jackson Williams	25	Priv.	F	5 th Arkansas Infantry	June 16, 1861	
Woodruff	William P. Campbell	22	Priv.	D	1 st Mounted Rifles	June 9, 1861	1870 Augusta Twp. Woodruff County

B. Indigent Families of Ashley County

Ashley	Hardy Holt	35	Priv.	G	1 st Trans. Miss. Inf.	May 31, 1862	Dead
Ashley	Thomas J. Williams	38	Priv.	F	Arkansas Regiment	Jan. 10, 1863	Dead
Ashley	Louis M. Corder	32	Priv.	B	3 rd Arkansas Regiment	April 24, 1862	Killed
Ashley	James M. Nutt	41	Priv.	E	1 st Arkansas Cav.	March 5, 1862	Dead
Ashley	Reuben A. Carter	28	Priv.	A	3 rd Arkansas Regiment	April 10, 1862	
Ashley	Nathaniel J. Clary (?)	30	Priv.	A	3 rd Arkansas Regiment	May 6, 1864	
Ashley	Albert G. Bailey	30	Priv.	F	1 st Arkansas Battalion	March 20, 1862	Missing (?)
Ashley	Jack W. Slaughter	33	Priv.	K	32 nd Miss. Regiment	April 11, 1862	Dead
Ashley	Marvin Bates	33	Priv.		1 st Trans. Miss. Cav.	July 6, 1862	
Ashley	Augustus Ventres	21	Priv.	A	3 rd Arkansas Regiment	April 21, 1861	Killed
Ashley	Spencer Jackson	38	Priv.	A	3 rd Arkansas Regiment	March 15, 1863	Dead
Ashley	James M. White	31	Priv.		Bells Battalion, La.	May 20, 1862	Dead

Ashley	John M. Jarvis	32	Priv.	A	5 th La. Cav.	July 11, 1862	Dead
--------	----------------	----	-------	---	--------------------------	---------------	------

KELLOGG’S BROAD-AX AND THE BEGINNINGS OF LITTLE ROCK, ARKANSAS

The following information concerning the early beginnings of Little Rock, Arkansas, comes from the Arkansas State Archives’ Small Manuscript Collection (SMC), Box 2, Folder No. 32, MG00200 AHC. On the 19th of June 1903, Mr. Jonathan Kellogg, of Little Rock, Arkansas, made the following statement regarding the beginnings of the town.

“Benjamin Kellogg was born at Oxford, Vermont, in the year 1726. About the year 1819, he came to the territory of Arkansas and located at Little Rock, where he engaged in his trade, that of blacksmith. His service was in great demand at that time, and for which he was well remunerated. Among the things which he manufactured were hammers, log chains, hatchets, tomahawks, and broad-axes. The latter were used in hewing logs for building houses. At the time he came to Little Rock the best houses were built of round poles, and a hewed log house was regarded at quite an aristocratic establishment. As I am informed, he made the broad ax which was [used to] hewed the logs used in building the first house of that kind erected in Little Rock. That house was built, I think, near the present corner of Scott and Markham streets. My father hewed [its] logs. A few years later he bought what is now known as the Kellogg Silver-Lead mines [in northern Pulaski County], and located on the [Old] Batesville road, the most prominent public highway in the state [at that time,] which had been constructed by the federal government, and was known as the Military Road.

Here he moved and established his [black smith] shop, and besides cultivating a small farm for many years. He did an extensive business in his time. His patrons were largely emigrants from the states [in the] south [headed for] Arkansas and Texas. Nearly all of whom traveled by wagon over this route. In the year 1848, he died, having acquired considerable real estate, among which was the mineral lands above referred to.¹ At the administrator’s sale of his personal property, among other things [was] was the broad ax referred to [above]. It was sold and was purchased by Mr. H. B. Chandler, then a resident of White County I believe. This was done when I was quite a small boy, and of course, I do not remember the transaction. However, I do remember the administrator’s sale.

In 1891, seeing an article in one of our city papers which had been copied from a Searcy paper, reciting some of these facts, I wrote Mr. Chandler and tried to purchase the axe, wishing to keep it as a relic, but did not succeed in doing so. Subsequently, Mr. George R. Brown [of Little Rock] negotiated with him [and] succeeded in securing it.”

Jonathan Kellogg was born September 9, 1840, in Pulaski County, Arkansas. He died in Little Rock, Arkansas, on January 15, 1920, and is buried in that city’s Mt. Holly Cemetery. See his application for membership in the Sons of the American Revolution at https://www.ancestry.com/interactive/2204/32596_242112-00208?pid=207124&treeid=&personid=&rc=&usePUB=true&_phsrc=CBi1015&_phstart=successSource#?imageId=32596_242112-00208 for additional information on his family.

¹ At one time this property was located in Pulaski County, Arkansas’, Mineral Township.

CHRISTIAN E. ZOELLER, A QUAIN OLD GERMAN CITIZEN, 1821

“Died, At Little Rock, in the Territory of Arkansas, on the 27th day of August, 1821, Mr. Christian E. Zoeller, a native of Emmendingen, Germany, aged 38 years and 21 days. His complexion was dark, had dark hair, and halted in his gait from a wound in one of his legs received in [some military] action.

He immigrated to the United States from Amsterdam, Holland; and has been a professor of military drawing and surveying, for upwards of eight years, in the United States Military Academy, at West Point in the state of New York. The property left by the said Christian E. Zoeller was appraised at \$1193.02 3/4; and the actual sales of the same account of the same amount to \$1241.46.

James De Baun, Adm’r.

Little Rock, Oct. 8, 1822

The editor of the *Enquirer*, St. Louis, Mo. is requested to insert the above [notice for] six weeks”¹

Zoeller, referred to as a “quaint old German Citizen” although he was only thirty-eight, was a disabled veteran of the German army, perhaps wounded in the Napoleonic wars.² He arrived in New York about 1817.³ He quickly obtained a position at West Point where he taught drafting and military drawing.⁴ He left this position in 1819 and made his way to the west. He may have come to the Arkansas Territory to help survey the network of new military roads then being laid out across parts of the territory or perhaps to work at the newly established military post at Fort Smith. He seems to have had some family living in St. Louis, Missouri.⁵

JEFFERSON COUNTY, ARKANSAS, INDIGENT FAMILIES OF CONFEDERATE SOLDIERS, 1863-1864

By Russell P. Baker

During the early days of the Civil War, the county court in Jefferson County, Arkansas, appropriated funds from its treasury to alleviate the sufferings of indigent and destitute families of Confederate soldiers within its bounds. The funds, usually in the form of county “script,” could be used to purchase food and shoes. Amounts of payment range from \$5 to \$60. The names of the recipients are listed below but the amount they received is not. The information comes from the Jefferson County, Arkansas, County Court Records Book G, pp. 192-198, 228-233, 241-246, and 248, MFILM County Roll 2494 in the microfilm collections of the Arkansas State Archives.

These lists were created between January 1, 1863-January 1, 1864. They contain many duplicate names. Many of the names are very difficult to read. Others are also spelled phonetically. Several were marked out. The names were compared to the 1860 U. S. Census and the townships of residence added if known. Some individuals are listed in “Pine Bluff Town” rather than a township. In 1869, most of Jefferson County’s western townships were taken to form a new county named Grant.

Civil War era townships in Jefferson County:

Barraque Township (located in the Redfield area),

¹ Little Rock, Arkansas, *Arkansas Weekly Gazette*, October 22, 1822, p. 4, col. 2, MFILM News 430, Roll 1.

² Josiah H. Shinn, *Pioneers and Makers of Arkansas* (1967), p. 347.

³ https://search.ancestry.com/cgi-bin/sse.dll?indiv=1&dbid=7486&h=1951397&tid=&pid=&usePUB=true&_phsrc=CBI1447&_phstart=successSource.

⁴ George W. Cullum, *Biographical Register of the Officer...of the U. S. Military Academy*, Vol. 3 (1891), pp. 520-521. This source says that Zoeller was born in Switzerland.

⁵ Pulaski County Loose Probate Packets #515, in the collections of the Arkansas State Archives.

Bartholomew/Bayou Bartholomew Township (annexed to Lincoln County in 1871),
Bogy Township (located in the eastern part of the county),
Boliver Township (located across the Arkansas River from Redfield),
Darysaw Township (annexed to Grant County in 1869),
Dudley Lake Township (located in the northern part of the county),
Plum Bayou Township (located across the river from Pine Bluff),
Richland Township (located in the southeastern corner of the county),
Simpson Township (annexed to Grant County in 1869),
Spring Township (located in the southwestern corner of the county),
Talladega Township (located below Spring Township),
Washington Township (annexed to Grant County in 1869),
White Oak Township (located in the southern part of the county),
Whiteville Township (located in the southern part of the county).¹

Pages 192, January 1, 1863

Mrs. William Newby, Vaugine Twp.	Mrs. J. M. Townsend, Plum Bayou Twp.
Mrs. N. G. Brummett (?)	Mrs. B. F. Davis, Plum Bayou Twp.
Mrs. N. E. Jones	Mrs. Joseph King, Plum Bayou Twp.
Mrs. John Dardenne, Vaugine Twp.	Mrs. E. J. Mitchell
Mrs. David Dyre	Mrs. Susan Bumgarner
Mrs. Thomas Freeman	Mrs. Morgan Delacy
Mrs. Joseph Placie (?)	Mrs. A. J. Summer
Mrs. A. J. Smith	Mrs. J. G. White, Simpson Twp.
Mrs. L. L. Dardenne, Bogy Twp.	Mrs. Joseph Brown
Mrs. Lace McKensey	

Page 193, February 5, 1863

Mrs. Harrold	Mrs. A. N. Hill
Mrs. Elizabeth Murphy	Mrs. Gainn
Mrs. Jane Morgan	Mrs. George W. Stone
Mrs. David Flynn, White Oak Twp.	Mrs. Elizabeth Elison and children
Mrs. J. A. Cordell	Mrs. Jane Brown
Mrs. A. J. Cearley	Mrs. Sarah Hawley
Mrs. Martha Parker	Mrs. J. E. Vandever
Mrs. Mary E. Frazier	Mrs. Willie W. Woodard
Mrs. Sarah Mitchell	Mrs. James W. Greenway
Mrs. W. F. C Faulkner	Mrs. Moutch
Mrs. William Lee	Mrs. F. R. Mitchell (?)
Mrs. Moses K. Coleman, Pine Bluff Town	Mrs. Stephen Ballard
Mrs. John C. McCain	Mrs. C. L. Hill
Mrs. Samuel Adams for Hinson's children	Mrs. J. H. Lee
Mrs. William Walton	Mrs. John Usrey
Mrs. Jacob Seibel	Mrs. John R. Loper, Washington Twp.
Mrs. Jesse Smithee, Vaugine Twp.	Mrs. William Williams
	Mrs. G. W. Harris
	Mrs. James Collins, Washington Twp.

¹ Russell P. Baker, *Arkansas Township Atlas 1819-1930* (2006), pp. 88-89.

Mrs. John Reeves, Vaugine Twp.
Mrs. John Plunket
Mrs. David McCauce

Mrs. Samuel King issued to Daniel
Taylor
Mrs. Daniel T. Wingard

Page 194, February 5. 1863

Mrs. William Woodel
Mrs. J. F. McElhed
Mrs. W. N. Jackson
Mrs. W. C. Bryant
Mrs. R. G. Mann
Mrs. E. F. Billings
Mrs. William T. Wooley
Mrs. H. C. Gilbeth
Mrs. James C. Cook, Simpson Twp.
Mrs. Demcy Geter
Mrs. John S. Taylor
Mrs. J. W. Simpson
Mrs. John Baggett
Mrs. J. S. Julian
Mrs. Lee Beaty
Mrs. John Huet
Mrs. William Crossett
Mrs. Lewis Wright
Mrs. E. B. Goldman, Washington Twp.
Mrs. James Cotrell issued to D. K.
McSwain

Mrs. William Harris
Mrs. Henry Harlow
Mrs. Henry Parker
Mrs. J. C. Griffin
Mrs. Henry Hudson
Mrs. Thomas Little
Mrs. Levi Simpson, Talladego Twp.
Mrs. James Sanders
Mrs. James McNeely
Mrs. James Wrenn
Mrs. M. L. Scott
Mrs. Noah Golding
Mrs. G. W. Williams
Mrs. N. F. Lights
Mrs. B. F. Simmons
Mrs. J. J. Bishop, Darysaw Twp.
Mrs. Elias Culpepper, Darysaw Twp.
Mrs. David Fisher
Mrs. Henry Bush, Washington Twp.
Mrs. Abram Lowman

Page 195, February 5. 1863

Mrs. T. L. Carr, Darysaw Twp.
Mrs. W. A. Wells
Mrs. H. Clay
Mrs. J. S. Raimack
Mrs. Wesley Watts, Talladago Twp.
Mrs. J. A. Daniels
Mrs. O. K. Bearden issued to David
Taylor, White Oak Twp.
Mrs. V. S. Glascoe
Mrs. E. B. Abbott
Mrs. J. Derryberry
Mrs. R. W. Thurman, White Oak Twp.
Mrs. J. A. Bryles
Mrs. W. W. Bell
Mrs. J. H. Causby
Mrs. J. C. Bottoms

Mrs. W. H. Wardlow
Mrs. C. C. Percy
Mrs. M. F. Norris, Darysaw Twp.
Mrs. Thomas Halen (?)
Mrs. R. B. Bell
Mrs. Y. J. Holloway
Mrs. J. B. Hogan
Mrs. J. Barrow, White Oak Twp.
Mrs. Thomas G. Taylor
Mrs. J. P. Bell
Mrs. T. H. Tucker
Mrs. D. R. Weaver
Mrs. B. F. Wade
Mrs. Andrew Crossett, Washington
Twp.
Mrs. Anderson Smith

Page 196, March 16, 1863

Mrs. John L. Conger
Mrs. Elizabeth Ross
Mrs. D. J. Maberry

Mrs. Ephraim Letrell
Mrs. William T. Daniel
Mrs. John L. Webb, Darysaw Twp.

Mrs. Solomon Johnson
Mrs. John D. Lybrand, White Oak Twp.
Mrs. Nathaniel Morrow
Mrs. John Glasgow
Mrs. James Porter, Darysaw Twp.
Mrs. William H. Brown
Mrs. M. D. Richie
Mrs. William R. Aday

Mrs. Washington Aday
Mrs. James Terry
Mrs. N. C. Williams (?)
Mrs. A. B. Winchester, Simpson Twp.
Mrs. David Tolbert
Mrs. Isom Lutlow
Mrs. James Walker
Mrs. Green Bowles

Page 197, March 16, 1863

Mrs. L. B. Horne
Mrs. Samuel Ringold
Mrs. William Richie
Mrs. John Parks, Simpson Twp.
Mrs. William Graves
Mrs. John C. Jones
Mrs. James A. Jones, Simpson Twp.
Mrs. J. A. Warlick
Mrs. Thomas Dunn
Mrs. James West for the child of
Elizabeth Lee
Mrs. Elisha Lee for child of Mary Lee,
White Oak Twp.
Mrs. William D. Wilson
Mrs. H. G. Goolsby, Bartholonew Twp.
Mrs. Jacob Sonendraker
Mrs. John S. Southworth
Mrs. D. B. Lewery
Mrs. William Russ for children of John
Russ
Mrs. Thomas J. Wilson
Mrs. Daniel McLemore
Mrs. Vetol Dardenne issued to Mrs.
Noble

Mrs. J. L. Allen, Bartholomew Twp.
Mrs. Samuel J. Harris
Mrs. Martin Altman
Mrs. Duncan Hand (Hahn)
Mrs. James Cole
Mrs. Jesse Miller
Mrs. Thomas J. Brummiatt
Mrs. Isaac Browning, Whiteville Twp.
Mrs. James W. Brumley
Mrs. Franklin G. Monk
Mrs. M. M. Roberson
Mrs. Thomas Singleton
Mrs. Emery Owens
Mrs. James H. Hinley for Lary More
child
Mrs. John C. Barnes
Mrs. Henry T. Langston
Mrs. Demsy P. Martin, Washington
Twp.
Mrs. John McKinley
Mrs. Henderson Yarbrough
Mrs. Dudley Bryant
Mar. Isaiah Weaver

Page 198, March 16, 1863

Mrs. G. A. McSwain, Talladego Twp.
Mrs. Elvira V. Nellunes (?)
Mrs. Elias Wilson,

Mrs. A. L. Lewis
Mrs. Henry S. Owen, White Oak Twp.

Page 228, October 1, 1863

Mrs. William Allbright
Mrs. William Newby, Vaugine Twp.
Mrs. John Dardanne, Vaugine Twp.
Mrs. David Dyre/Dyer, Plum Bayou
Twp.
Mrs. Thomas Freeman
Mrs. Joseph Placie

Mrs. A. J. Smith
Mrs. L. L. Dardanne, Bogy Twp.
Mrs. J. M. Townsend
Mrs. B. F. Davis
Mrs. Joseph King, Blum Bayou Twp.
Mrs. Susan Bungarten
Mrs. Morgan DeLacy

Page 229, October 1, 1863

Mrs. J. G. White, Simpson Twp.
Mrs. Joseph Brown
Mrs. Harrold
Mrs. John W. Murphy
Mrs. Jane Morgan
Mrs. David Flynn, White Oak Twp.
Mrs. N. G. Brummett (?)
Mrs. J. A. Cordell
Mrs. A. J. Cearly
Mrs. Sarah Mitchell, Vaugine Twp.
Mrs. W. F. C. Faulkner
Mrs. William Lee, Washington Twp.
Mrs. Moses K. Coleman, Pine Bluff
Town
Mrs. John C. McCain, Pine Bluff Town
Mrs. Samuel Adams for Hinson children
Mrs. William Walton, White Oak Twp.
Mrs. Jacob Siebel
Mrs. A. N. Hill, Simpson Twp.
Mrs. George W. Stone, Vaugine Twp.
Mrs. Elizabeth Ellison, Washington
Twp.
Mrs. J. E. Vandever
Mrs. Willie W. Woodard

Mrs. Monch (?)
Mrs. F. K. Mitchell, Vaugine Twp.
Mrs. Stephen Bullard, Vaugine Twp.
Mrs. C. L. Hill
Mrs. James Hendrix
Mrs. J. J. Green
Mrs. J. H. Lee, Washington Twp.
Mrs. John R. Soper
Mrs. William Williams
Mrs. G. W. Harris, Plum Bayou Twp.
Mrs. James Collins, Washington Twp.
Mrs. John Plunket
Mrs. David McCance (?), Washington
Twp.
Mrs. Samuel King
Mrs. Daniel L. Wingard
Mrs. William Woodell
Mrs. J. F. Pegram, Whiteville Twp.
Mrs. T. J. McElzea
Mrs. W. N. Jackson, Simpson Twp.
Mrs. W. C. Bryant, Simpson Twp.
Mrs. B. G. Maim
Mrs. E. F. Billings

Page 230, October 1, 1863

Mrs. William T. Wooley
Mrs. H. C. Gilbert
Mrs. James C. Cook
Mrs. Dewey Geter
Mrs. John S. Taylor
Mrs. J. W. Simpson
Mrs. John Buggett
Mrs. J. N. Julien
Mrs. Lee Beaty
Mrs. John Huet
Mrs. William Crossett
Mrs. Lewis Wright
Mrs. E. B. Goldman, Washington Twp.
Mrs. James Cotrill
Mrs. William Harris, Dudley Lake Twp.
Mrs. Henry Hudson
Mrs. J. C. Griffin
Mrs. Levi Simpson, Talladego Twp.
Mrs. James Sanders
Mrs. James McNeely

Mrs. James Wrems (?)
Mrs. M. L. Scott
Mrs. G. W. Williams
Mrs. N. F. Lights
Mrs. Hugh A. Canthers (?)
Mrs. B. F. Simmons
Mrs. J. J. Bishop, Darysaw Twp.
Mrs. Elias Culpepper
Mrs. David Fisher
Mrs. Abram Lowman
Mrs. T. L. Carr, Darysaw Twp.
Mrs. W. A. Wills, Darysaw Twp.
Mrs. H. Clay, Darysaw Twp.
Mrs. Purdue for J. S. Raymack
children
Mrs. Wesley Watts, Talladega Twp.
Mrs. J. A. Daniels
Mrs. O. K. Bearden
Mrs. V. S. Glascoe, White Oak Twp.
Mrs. E. B. Abbott

Mrs. J. Derryberry
Mrs. R. W. Thurman, White Oak Twp.
Mrs. J. A. Bryles

Mrs. W. W. Bell
Mrs. J. H. Causby

Page 231, October 1, 1863

Mrs. J. C. Bottoms
Mrs. W. H. Wardlow
Mrs. C. C. Percy
Mrs. M. F. Norris, Darysaw Twp.
Mrs. Thomas Halen (?)
Mrs. R. B. Bell
Mrs. Y. J. Holloway
Mrs. J. B. Hogan
Mrs. J. Barrow, White Oak Twp.
Mrs. Thomas G. Taylor
Mrs. J. P. Bell
Mrs. T. H. Tucker
Mrs. D. R. Weaver
Mrs. B. F. Wade
Mrs. Andrew Crossett, Washington
Twp.
Mrs. Anderson Smith
Mrs. Elizabeth Ross, Vaugine Twp.
Mrs. Ephrim Littrel
Mrs. W. T. Daniel, White Oak Twp.
Mrs. John L. Webb, Whiteville Twp.
Mrs. Solomon Johnson, White Oak Twp.
Mrs. John D. Lybrand, White Oak Twp.

Mrs. Nathaniel Morrow
Mrs. John Glasgow
Mrs. James Porter, Darysaw Twp.
Mrs. M. D. Richie
Mrs. William R. Aday
Mrs. James Terry, Darysaw Twp.
Mrs. W. C. Williams, Barraque Twp.
~~Mrs. A. B. Winchester~~, Simpson Twp.
Mrs. David Talbott
Mrs. Isom Litlow (?)
Mrs. James Walker, Simpson Twp.
Mrs. Green Bowles, Simpson Twp.
Mrs. L. B. Horne
Mrs. William Ritchie, Vaugine Twp.
Mrs. John Parks, Simpson Twp.
Mrs. John C. Jones, Simpson Twp.
Mrs. James A. Jones, Simpson Twp.
Mrs. J. A. Warlick
~~Mrs. Thomas Darn~~ (?)
Mrs. Jacob Ionendrades (?)
Mrs. William D. Wilson
Mrs. H. G. Goolsby, Bartholomew Twp.

Page 232, October 1, 1863

Mrs. D. B. Lowrey
Mrs. William Russ for John Russ
children
Mrs. Thomas J. Wilson
Mrs. Vilot Darderne
Mrs. J. L. Allen
Mrs. Samuel J. Harris
Mrs. Martin Altman
Mrs. Duncan Hahn
Mrs. James Cole
Mrs. Jesse Miller
Mrs. Thomas J. Brummett
Mrs. Isaac Browning
Mrs. James W. Brumley
Mrs. Franklin G. Monk
Mrs. M. M. Roberson
Mrs. Thomas Singleton
Mrs. James H. Henley

Mrs. John C. Barnes
Mrs. Henry F. Langston
Mrs. Demsey P. Martin
Mrs. John McKinley
Mrs. Henderson Yarbrough
Mrs. Dudley Bryant
Mrs. Isaiah Weaver
Mrs. G. A. McSwain
Mrs. Elvina V. Nellums
Mrs. Elias Wilson
Mrs. Emery Owens
Mrs. A. L. Lewis
Mrs. James L. Campbell
Mrs. Burton Lewis
Mrs. James Sorrells
Mrs. Willington Clark
Mrs. James Miller
Mrs. F. M. Dunham

Mrs. L. Dyson
Mrs. Robert Summerval
Mrs. John G. Egell
Mrs. Washington Baggett
Mrs. William Lancaster

Mrs. Charles P. Murdock
Mrs. William Windham
Mrs. James L. Busby

Page 233, October 1, 1863

Mrs. Bart Dardenne
Mrs. Ely H. Faught
Mrs. D. T. Barnes
Mrs. Allen Dorman
Mrs. Jesse Nicholson
Mrs. A. J. Freeman
Mrs. J. W. Rudkins
Mrs. Nancy Vinson (?)
Mrs. John C. Henry
Mrs. James W. Greenway (?)
Mrs. William Mitchell
Mrs. Parson for Josephine Smith's
children

Mrs. Alpheus M. Clark
Mrs. William Backetor (?)
~~Mrs. Dimey Martin~~ (?)
Mrs. Jesse Burns
Mrs. Peany Allbright (?)
Mrs. Jacob Weaver
Mrs. Robert Herrage (?)
Mrs. Thomas Q. Martin
Mrs. R. J. Kimbell
Mrs. James R. Walker
Mrs. James M. Vinson

Page 241, October 1, 1863-January 1, 1864

Mrs. Abram Shell
Mrs. Abram Lybrand
Mrs. James Brown
Mrs. David Dyre
Mrs. Thomas Freeman
Mrs. Joseph Placie
Mrs. A. J. Smith
Mrs. L. L. Dardennie
Mrs. J. M. Townsend
Mrs. B. F. Davis
Mrs. Joseph King
Mrs. Susan Bumgarner
Mrs. Morgan Delacy
Mrs. J. G. White, Simpson Twp.

Mrs. Samuel B. Gillespie
Mrs. Thomas Taylor
Mrs. William Newby
Mrs. Joseph Brown
Mrs. Harrold
Mrs. John W. Murphy
Mrs. Jane Morgan
Mrs. David Flynn, White Oak Twp.
Mrs. N. G. Brummett (?)
Mrs. J. A. Cordell
Mrs. A. J. Cearly
Mrs. Sarah Mitchell, Vaugine Twp.
Mrs. W. F. C. Faulkner
Mrs. William Lee, Washington Twp.

Page 242, August 4, 1863

Mrs. Elizabeth Ellison, Washington
Twp.
Mrs. J. E. Vandever
Mrs. Willie W. Woodard
Mrs. Monch (?)
Mrs. J. J. Green
Mrs. F. K. Mitchell, Vaugine Twp.
Mrs. Stephen Bullard, Vaugine Twp.
Mrs. C. L. Hill
Mrs. James Hendrix

Mrs. J. J. Green
Mrs. J. H. Lee, Washington Twp.
Mrs. John R. Soper
Mrs. William Williams
Mrs. G. W. Harris, Plum Bayou Twp.
Mrs. James Collins, Washington Twp.
Mrs. John Plunket
Mrs. David McCance (?), Washington
Twp.
Mrs. Samuel King

Mrs. Daniel L. Wingard
Mrs. William Woodell
Mrs. J. F. Pegram, Whiteville Twp.
Mrs. T. J. McElzea
Mrs. W. N. Jackson, Simpson Twp.
Mrs. W. C. Bryant, Simpson Twp.
Mrs. B. G. Maim
Mrs. E. F. Billings
Mrs. William T. Wooley
Mrs. H. C. Gilbeth
Mrs. James C. Cook, Simpson Twp.
Mrs. Demcy Geter
Mrs. John S. Taylor
Mrs. J. W. Simpson

Mrs. John Baggett
Mrs. J. S. Julian
Mrs. Lee Beaty
Mrs. John Huet
Mrs. William Crossett
Mrs. Lewis Wright
Mrs. E. B. Goldman, Washington Twp.
Mrs. James Cotrell issued to D. K. McSwain
Mrs. William Harris
Mrs. Henry Harlow
Mrs. Henry Parker
Mrs. J. C. Griffin

Page 243, August 4, 1863

Mrs. Levi Simpson, Talladega Twp.
Mrs. James Sanders
Mrs. James McNeely
Mrs. James Wrenn (?)
Mrs. M. L. Scott, Pine Bluff Town
Mrs. G. W. Williams, White Oak Twp.
Mrs. N. F. Lights
Mrs. Hugh A. Canthers (?)
Mrs. B. F. Simmons
Mrs. J. J. Bishop, Darysaw Twp.
Mrs. Elias Culpepper
Mrs. David Fisher
Mrs. Abram Lowman
Mrs. T. L. Carr, Darysaw Twp.

Mrs. W. A. Wells, Darysaw Twp.
Mrs. H. Clay, Pine Bluff Town
Mrs. Purdue for J. S. Raymack children, White Oak Twp.
Mrs. Wesley Watts, Talladega Twp.
Mrs. J. A. Daniels
Mrs. O. K. Bearden
Mrs. V. S. Glascoe
Mrs. E. B. Abbott
Mrs. J. Derryberry
Mrs. R. W. Herman
Mrs. J. A. Bryles
Mrs. W. W. Bell
Mrs. J. H. Causby

Page 244, August 4, 1863

Mrs. Anderson Smith
Mrs. Elizabeth Ross, Vaugine Twp.
Mrs. Ephrim Littrel
Mrs. W. T. Daniel, White Oak Twp.
Mrs. John L. Webb, Whiteville Twp.
Mrs. Solomon Johnson, White Oak Twp.
Mrs. John D. Lybrand, White Oak Twp.
Mrs. Nathaniel Morrow
Mrs. John Glasgow
Mrs. James Porter, Darysaw Twp.
Mrs. M. D. Richie
Mrs. William R. Aday
Mrs. James Terry, Darysaw Twp.
Mrs. W. C. Williams, Barraque Twp.
~~Mrs. A. B. Winchester~~, Simpson Twp.
Mrs. David Talbott

Mrs. Isom Litlow (?)
Mrs. James Walker, Simpson Twp.
Mrs. Green Bowles, Simpson Twp.
Mrs. L. B. Horne
Mrs. William Ritchie, Vaugine Twp.
Mrs. John Parks, Simpson Twp.
Mrs. John C. Jones, Simpson Twp.
Mrs. James A. Jones, Simpson Twp.
Mrs. J. A. Warlick
~~Mrs. Thomas Darn~~ (?)
Mrs. Jacob Ionendrades (?)
Mrs. William D. Wilson
Mrs. H. G. Goolsby, Bartholonew Twp.
Mrs. D. B. Lowrey
Mrs. William Russ for John Russ children

Mrs. Thomas J. Wilson
Mrs. Vilot Darderne
Mrs. J. L. Allen
Mrs. Samuel J. Harris
Mrs. Martin Altman
Mrs. Duncan Hahn

Mrs. M. M. Roberson
Mrs. Thomas Singleton
Mrs. James H. Henley
Mrs. John C. Barnes
Mrs. Henry F. Langston
Mrs. Demsey P. Martin
Mrs. John McKinley
Mrs. Henderson Yarbrough
Mrs. Dudley Bryant
Mrs. Isaiah Weaver
Mrs. G. A. McSwain
Mrs. Elvina V. Nellums
Mrs. Elias Wilson
Mrs. Emery Owens"
Mrs. A. L. Lewis
Mrs. James L. Campbell
Mrs. Burton Lewis
Mrs. James Sorrells
Mrs. Willington Clark
Mrs. James Miller
Mrs. F. M. Dunham
Mrs. L. Dyson

Mrs. William Bachalor
Mrs. Duncy Martin
Mrs. Jesse Barnes
Mrs. Peany Albright
Mrs. Jacob Weaver

Mrs. Mary Fragin
Mrs. John Reeves
Mrs. Delilah Wordell

Mrs. James Cole
Mrs. Jesse Miller
Mrs. Thomas J. Brummett
Mrs. Isaac Browning
Mrs. James W. Brumley
Mrs. Franklin G. Monk

Page 245, August 4, 1863

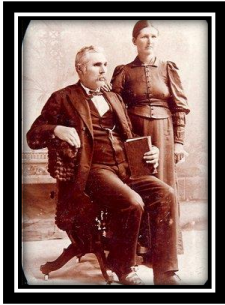
Mrs. Robert Summervall
Mrs. John G. Egell
Mrs. Washington Baggett
Mrs. William Lancaster
Mrs. Charles P. Murdock
Mrs. William Windham
Mrs. James L. Busby
Mrs. Bart Darnenne
Mrs. Ely H. Faught
Mrs. D. T. Barsed
Mrs. Allen Dorman
Mrs. Jesse Nicholson
Mrs. A. J. Freeman
Mrs. J. W. Rudkins (?)
Mrs. Nancy Vinson
Mrs. John E. Hanry (?)
Mrs. James W. Greenway
Mrs. William Mitchell
Mrs. Parson L. (?) for Josephine Smith a
child
Mrs. Alphius M. Clark

Page 246, August 4, 1863

Mrs. Robert Herrage
Mrs. Thomas Q. Martin
Mrs. R. J. Kimbrel
Mrs. James R. Walker
Mrs. James M. Vinsen

Page 248, August 15, 1863

Mrs. E. Williams at Farnells



REV. THOMAS J. PRICHARD, ARKANSAS CONFEDERATE VETERAN

The following obituary is an outstanding example of the kind of flowery language that is often found in Southern obituaries from the middle to the end of the nineteenth century. Rev. Prichard is buried in the Olive Hill Cemetery located on Chicot Road in the eastern part of Saline County, Arkansas. The information is taken from the Little Rock, Arkansas, *Arkansas Methodist*, September 28, 1904, p. 15, col. 3, MG06882 AHC.

“The obituary for Rev. Thomas J. Prichard¹ [who] fell asleep in Christ, September 11, 1904. [He died on] Sabbath evening about 8 o’clock at his home on the upper Hot Springs road, twelve miles west of Little Rock. The family and neighbors experienced such a shock they had never received as his happy fled spirit was being kissed away to its final reward at God’s right hand.

The heart broken family and friends stood sobbing near and he assured them that he was ready and not afraid to die and go to his home prepared by our Christ, pleading with them to meet him in heaven, all of which the family consented to do. Brother Prichard was born in DeKalb County Ga, June 29, 1839. He spent his boyhood and early manhood laboring for his good old widowed mother [Elizabeth Hays Prichard] and to her kind guidance he owes much of his success in business.² In 1860 he was united in holy matrimony with Miss Amanda Roberds, a bright industrious girl of a Georgia family. They lived together 44 years. Their happy union was blessed with several children, 8 of whom are left to mourn with mamma the departure of the husband and father.

His love for his Lord and family was the crowning jewel of his character. He professed religion at the age of 16 and united the Methodist Episcopal Church, South [M. E. Church, South], and 14 years later was licensed to preach and later was ordained a deacon. He served 34 years as a local pastor and was a very efficient preacher with demonstration and power of Spirit. Many precious souls were converted under his ministry. His kindly advise was heeded by young and old and it is our bounden duty to lavish praise on one so fondly loved and highly appreciated as was Bro. Prichard.

When the disturbance between the states [the Civil War] assumed the form of hostilities he cast his lot with the Southland [being] among the first to enlist. He served as lieutenant until he received the wound [that] at last caused his death. He came to Arkansas soon after the war and engaged in the sawmill and lumber enterprise and as a businessman he was quite a success.³ As he and his wife loved and labored together they acquired enough several years before his death to retire, leaving the business materially to his sons, who are men of ability. His last illness persisted three weeks and he died at the age of 65 years.⁴

He was buried at his old home, Olive Hill Cemetery, [in eastern] Saline County with the honors of the Masonic Lodge, Rev. F. E. Dodson officiating.⁵ He said to me, ‘I belong to you and you belong to me, this year’ I said, ‘Very well.’ He was one of the best men that I have ever formed the acquaintance. Wife, mother and children, you cannot bring him back, but you can go to him. His funeral will be preached at the first Sabbath in October 1904 near his home under the gospel tent. Written by his pastor, Hugh Revely.”

¹ He was also known as Rev. Johnathan Thomas Prichard.

² 1860 U.S. Census, Browning District, DeKalb County, Georgia, p. 287B.

³ 1870 U.S. Census, Fouche Township, Pulaski County, Arkansas, p. 188A.

⁴ 1900 U.S. Census, Ellis Township, Pulaski County, Arkansas, p. 121A.

⁵ 1880 U. S. Census, Otter Creek Township, Saline County, Arkansas. p. 242B.

The following brief obituary of Rev. Prichard was published in the Little Rock, Arkansas, *Arkansas Democrat*, September 15, 1904, p. 7, col. 6, MFILM News, Roll 39, and contains some additional information.

“Rev. T. J. Prichard, one of the old settlers of [Pulaski] county, died last Sunday at his home at Halstead [west of Little Rock], in Brodie township, and his funeral was held yesterday at the Olive Hill Cemetery, Saline county, near the place where he first located when he came from Georgia to Arkansas in 1872. He was a farmer, sawmill man and local preacher of the M. E. Church, South, and a member of the Masonic order, who officiated at his obsequies. He is survived by his wife, three sons and five daughters. His death was due to paralysis resulting from an old wound received in the Confederate army.” The names of his children were Albert Lorenza Pritchard, Martha Sarah Grogan, Queen Victoria Ellis, Cora Fredona Lewellen, Amanda Elizabeth Mashburn, Martin Andrew Pritchard, Lillian May Ulmer, and Alice Matilda Lemaster.

JEWISH BURIALS IN PINE BLUFF, ARKANSAS, PART I

The following information on Jewish burials in Pine Bluff, Arkansas, appears here with the kind permission of Dr. Josh Parshall, Director, Department of History, Goldring/Woldenberg Institute of Southern Jewish Life, P. O. Box 16528, Jackson, Mississippi 39236-0528. Contact him at www.isjl.org for additional information. The information comes from the *Encyclopedia of Southern Jewish Communities*, <http://www.isjl.org/arkansas-pine-bluff-jewish-cemetery-list-encyclopedia.html>. Names in all caps following a woman’s first name seem to indicate her maiden name. The place of burial is not shown in these records. Part II of this article will appear in our Spring 2020 issue.

Last Name	First Name	Date of Birth	Date of Death
Abrams	Myron Louis	1910	1984
Allbright	May MOORE	1886	1924
Alzheimer	Julia		
Alzheimer	Louis	1849	1922
Alzheimer	Beno	1879	1917
Alzheimer	Ben J.	1877	1946
Alzheimer	Belle M.	1876	1951
Altschul	Flora S.	1884	1977
Altschul	Janet	1913	1982
Altschul	Sam J.	1883	1975
Altschul	L. Reno, Jr	1928	
Altschul	L. Reno, Sr	1905	
Altschul		1927	
Altschul	Sol	1823	
Altschul	Julia REINACH	1824	
Altschul	Fannie M.	1858	
Altschul	Morris	1851	
Altschul	Jacob L.	1863	
Altschul	Joseph S.	1845	1923
Altschul	Jeanette	1843	1923

Altschul	Bertrand	1877	1917
Altschul	Adolph	1841	1901
Altschul	Meyer	1868	1878
Altschul	Blanche	1876	1876
Altschul	Sam	1813	1875
Aschaffenberg	Leopold		1910
Aschaffenberg	Hannah SOMMERS	1835	1911
Aschaffenberg	David	1831	1890
Baim	Charles Samuel	1950	1983
Baim	Gene	1908	1979
Baim	Leo A.	1901	1976
Baim	Charles	1902	1960
Baim	Aaron	1904	1956
Baim	Samuel Baer	1875	1956
Baim	Sarah Rebecca	1876	1951
Baker	Jacob	1830	1912
Banks	Robert M.	1921	1976
Barre	Abe	1894	1974
Barre	Dora	1895	1950
Barre	Samuel	1917	1950
Barth	Hattie L.	1887	1960
Bearsch	Sam R.	1882	1941
Becker	Flora FRANKLIN	1858	1885
Bell	Hattie		1871
Bennett	Amelia		1902
Benson	Herman	Feb 4,1894	May 18,1894
Benson	Browney	1857	1894
Berlin	Jonas	1845	1893
Berlin	Meyer	1854	1924
Berlin	Sam	1850	1913
Berlin	Tillie SUMMER	1852	1937
Berlin	David Blain	1885	1952
Berlin	Etta J.	1853	1881
Bernath	Henry	1866	1948
Bernath	Joseph	1855	1910
Bernath	Louise	1864	1947
Bernath	Adolph	1862	1933
Bernath	Lillie	1867	1932
Bernath	Sarah	1826	1916
Bernath	Moses	1826	1902
Bernath	Victor	1872	1875
Bickard	Leopold	1850	1903
Bilsky	Bessie SOLTZ	1894	1934
Bilsky	Sarah BRAM	1899	1964

Bilsky	William W.	1892	1959
Bilsky	Jeanette	1872	1939
Bilsky	Solomon	1867	1935
Bilsky	Maurice	1900	1944
Bilsky	Arthur	1908	1921
Biuori		1855	1862
Blau	Yetta	1899	1974
Blau	Sheldon	1922	1980
Blau	Lawrence E.	1898	1986
Bleiweiss	Albert	1919	1973
Block	Fred S.	1907	1965
Block	Rosa L.	1868	1937
Block	Hattie	1848	1931
Block	Pouis (?)	1844	1920
Bloom	Bessie I.	1870	1911
Bloom	Fannie	1888	1891
Bloom	Jacob J.	1833	1900
Bloom	Garland, Jr.	1885	1889
Bloom	Bloomah J.	1849	1934
Bloom	Jacob	1846	1892
Bloom	Jacob	1824	1889
Bloom	Henrietta	1832	1898
Bloom	Sammie F.	1870	1889
Bloom	Ruth L. BROWN	1895	1922
Bloom		1919	1919
Bloom	Ruth L. DREYFUS	1876	1908
Bloom	Ira Dreyfus, Sr.	1896	1967
Bloom		1862	1863
Bloom	Jacob	1837	1862
Bloom	Bennett	1860	1871
Bloom	Jamie	1871	1874
Bloom	John	1832	1883
Bloom	Fannie	1833	1879
Bloom	Charles		1887
Bloomfield	Essie BILSKY	1906	1947
Blum	Jahanetta	1816	1895
Blum	Minna	1888	1892
Blum	Belle M.	1876	1894
Blum	August	1846	1900
Blum	Amelia A.	1854	1919
Blute	Moses	1852	1876
Bluthenthal	Samuel	1833	1917
Bluthenthal	Bertha B.	1852	1924
Bluthenthal	Adolph	1865	1927
Bluthenthal	Ray	1867	1940

Bluthenthal	David S.	1909	1971
Bluthenthal	Carolyn H.	1907	1972
Bluthenthal	Henriette	1903	1979
Bluthenthal	Vivian	1881	1892
Bluthenthal	Sarah	1848	1915
Bluthenthal	David	1826	1902
Bluthenthal	Julian	1876	1886
Bluthenthal	Sophie S.	1858	1932
Bluthenthal	David M.	1845	1915
Bluthenthal	Bessie	1883	1935
Bluthenthal	Rebecca B.	1852	1915
Bluthenthal	D. S.	1841	1908
Bluthenthal	Herb. M.	1838	1858
Bookman	Lester J.	1915	1966
Bram	Saul	1903	1986
Bram	Barnett	1871	1949
Bram	Annie LIPPMAN	1881	1950
Bram	Miriam Ruth	1881	1950
Bram	Joseph Benjamin	1907	1966
Bram	David	1901	1979
Bram	Harris	1866	1950
Bram	Rosa	1882	1957
Bram	Reuben Moss	1916	1958
Bram	Louis	1901	1983
Bram	Meyer	1909	1986
Bram	Jennie Ida	1907	1986
Bram	Dinah	1842	1914
Bromberger	Caroline	1856	1907
Bromberger	Nettie	1881	1902
Bromberger	Simon	1828	1888
Brown	Moses	1846	1916
Brown	Pauline	1852	1928
Brown	Florence M.	1888	1893
Camden	Gertrude E.	1921	1967
Caplan	Ben	1902	1954
Cohen	Samuel D.	1888	1947
Cohen	Sarah Rebecca	1864	1912
Cohen	Esther L.	1880	1947
Cohen	Joseph	1865	1946
Coldman	Annie	1829	1864
Cook	Amelia	1861	1947
Cook	Fannie	1822	1910
Cook	Joel	1821	1907
Cook	Minnie H.	1864	1929
Cook	Nathan L.	1852	1932

Cook	Meyer C.	1858	1904
Cook	Henrietta H.	1889	1980
Cook	Jerome Henry	1894	1973
Cook	Henry	1857	1934
Cook	Rebecca	1864	1915
Cook	Sam H.		1968
Crane	Evelyn CRIM	1884	1972
Dante	Sol	1886	1920
Davis	Frederica R.	1840	1916
Davis	Louis	1879	1922
Davis	Fannie SOLTZ	1882	1961
Davis	Saul Richard	1909	1947
Deutsch	Reginald		1918
Deutsch	Charles	1836	1912
Deutsch	Rebecca	1840	1867
Dreidel	Lillian	1876	1949
Dreyfus	H. Artie	1885	1930
Dreyfus	David Stanley	1890	1951
Dreyfus	Bertha SIMON	1856	1933
Dreyfus	Isaac	1850	1934
Dreyfus	Rosina	1810	1875
Dreyfus	Minnie Florence	1871	1874
Dreyfus	Annie F.	1846	1889
Dreyfus	Ferdinand	1838	1905
Eilbott	Reginald	1891	1958
Eilbott	Leola	1892	1936
Eilbott	Leon	1857	1910
Eilbott	Minnie May	1869	1949
Eilbott	Gerson L.	1891	1946
Eilbott	Henrietta L.	1891	1959
Eilbott	Fay Jean		1964
Eilbott	Garland G.		1945
Eilbott	Elias	1852	1923
Eilbott	Fannie May	1858	1942
Eilbott	Pauline I.		1964
Eilbott	Lillian		1906
Eilbott	Jessie		1960
Eilbott	Lucille		1979
Eilbott	Sadie M.		1965
Eilbott	Moses	1908	1909
Eiseman	Miriam F.	1872	1927
Eisenkramer	Hubert	1912	1973
Eisenkramer	William	1874	1945
Eisenkramer	Minnie L.	1883	1974
Eisenkramer	Gus	1875	1919

Eisenkramer	Max	1877	1941
Eisenkramer	Rena	1875	1939
Eisenkramer	Bessie Camille	1900	1964
Elle	P.	1861	1863
Ellison	Sarah	1860	1908
Englander	Napthalie	1834	1873
Englander	Louis	1836	1917
Englander	Yetta	1854	1940
Faller	Herman	1842	1871
Farian	Herman	1848	1884
Festinger	Monroe Melvin	1917	1985
Fies	Samuel	1841	1919
Fies	Herbert	1874	1876
Fies	Jacob	1868	1870
Fies	Adel	1812	1872
Fies	Pagmir	1877	1878
Fies	Henry	1861	1879
Fink	Rose B.	1884	1967
Fink	Nathan	1878	1960
Fischer	Vera B.	1890	1969
Fleisig	Charles	1881	1963
Fleisig	Mollie	1889	1957
Fowles	Minette	1884	1966
Fox	Morris	1879	1885
Fox	Caroline		
Frank	Bertha KAUFMAN	1856	1909
Frank	Fernando		1932
Frank	Gussie	1859	1915
Frank	Sarah KING	1878	1884
Frankland	Solomon	1848	1868
Frankland	Mary	1832	1872
Frankland	Lizzie	1851	1881
Franklin	Alice	1896	1951
Franklin	Ben	1875	1937
Franklin	Rebecca		1913
Franklin	Samuel		1893
Franklin	Goldina H.	1840	1903
Franklin	Sol	1827	1895
Franklin	Sam	1866	1921
Franklin	Rose FULD	1873	1947
Franklin	James G.	1906	1946
Franklin	Sarah W.	1878	1946
Franklin	David L.	1863	1919
Franklin	Henry	1862	1862
Franklin	Ray	1881	1884

Freiberg	Gertrude	1872	1874
Friedman	Lena	1880	1903
Friedman	Samuel	1858	1916
Friedman	Matilda	1861	1890
Furst	Samuel	1837	1866
Furth	Fred C.	1863	1924
Furth	Jennie A.	1874	1927
Gans	E. V.		1852
Gershner	Helen H.	1888	1976
Gershner	Samuel A.	1883	1961
Glaser	Ida N.	1889	1960
Glaser	Jacob	1882	1955
Gogel	Ethel SCHLOSS	1893	1979
Goldman	Samuel	1871	
Goldweber	Aaron	1881	1973
Goldweber	Anna	1887	1919
Goldweber	Samuel	1906	1980
Goldweber	Clara	1910	1986
Gottlies	Marx	1857	1923
Gottlies	Babette MAIER	1866	1938
Gottlies	Joe M.	1887	1950
Gottlies	Leah H.	1892	1976
Grace	Hattie L.	1896	1901
Graham	Leah LEVINE	1900	1986
Greenberg	Harry	1861	1918
Greenblatt	Maier	1849	1885
Hamburger	Henry	1892	1966
Hamburger	Rose	1893	1952
Hanf	Ruth L.	1889	1972
Hanf	Harry	1880	1950
Hanf	Roy M.	1882	1922
Hanf	Ike E.	1879	1951
Hanf	Eliza	1818	1898
Hanf	Edward	1844	1900
Hanf	Isaac	1855	1878
Hanf	Morris	1848	1911
Hanf	Dinah	1856	1943
Hart	Carrye B.		1911
Hart	Chandler B.	1898	1979
Hart	William		1906
Heller	Emma	1882	1969
Heller	Babette S.	1842	1937
Henry	Nathan	1880	1881
Herzog	Fulda		1908
Hilzheim	Henrietta		1881

Hirshorn	Ruby MOORE	1891	1977
Hirshorn	Nathan	1884	1932 (?)
Honnet	Cecilia G.	1844	1924
Hoover	Pauline	1848	1892
Hoover	Emanuel	1840	1899
Hoover	Samuel	1880	1922
Hyman	Max Gottlies	1922	1922
Hyman	Bernhardt	1833	
Isaacs	Maria	1849	1898
Isaacs	Isaac	1806	1888
Isaacs	Esther	1805	1897
Isaacs	Moses	1839	1898
Jacobs	Walter D.	1886	1887
Jacobs	Milton	1884	1885
Jacobs	Harry J.	1847	1914
Jacobs	Jennie	1849	1885
Jaffe	Adelia	1904	1906
Kahn	Andrew George	1889	1968
Kastor	Leo	1862	1915
Kastor	Florence M.	1869	
Katz	Nora	1874	1910
Katz	Ernestine ROSENTHAL	1840	1895
Katzenstein	Samuel	1869	1964
Katzenstein	Blanche	1874	1953
Kaufman	Joan Helene	1907	1910
Kaufman	Babette	1845	1928
Kaufman	Samuel	1853	1911
Kaufman	David	1886	1916
Kaufman	Priscilla	1858	1880
Kimpel	Rosalie	1858	1880
Klarberg	Louis	1853	1912
Koppel	Freda	1877	1942
Kornfeld	Josephine B.	1877	1958
Kornfeld	Joseph S.	1876	1944
Kornfeld	Rosemary	1909	
Kornfeld	Albert	1901	1962
Kouple	Joseph B.	1898	1976
Kraus	Mary		
Krumpner	Joseph	1859	1912
Krumpner	Julda (?)		1883
La France	Edward Gregory	1973?	1883
Ladt	Nathan	1854	1924
Ladt	Albertine	1853	1923
Lee	Clarence	1881	

Leitner	Ike R.	1874	1943
Leitner	Lelia HELLER	1880	1968
Leitner	Roy S.	1903	1981
Leitner	Bettie	1881	1970
Leitner	Julius	1877	1944
Lesinski	Saul	1837	1909
Lesinski	Rosa BENNETT	1961	1916
Lesinski	Marcus	1839	1904
Levi	Carrie B.	1848	1932
Levi	Raphael	1875	1932
Levi	Rosa BROWN	1876	1935
Levi	Henrietta	1880	1959
Levi	Charles	1881	1918
Levi	Henrietta VOGEL	1879	1963
Levi	Sam	1867	1929
Levi	Samuel	1866	1869
Levine	Morris	1982	1938
Levine	Esther BRAM	1881	1949
Levine	Jacob	1906	1973
Levine	Samuel Michael	1890	1965
Levine	Susie	1865	1942
Levine	Jay	1888	1969
Levy	Abe	1882	1961
Levy	Eunice HELLER	1884	1961
Lewine	Marcia	1872	1932
Lewine	Nate	1880	1921
Lewine	Moe	1873	1915
Lewine	Clara SCHARFF	1879	1943
Lewine	Edward	1868	1911
Lewine	Janie	1842	1908
Lewine	Lazarus	1838	1906
Lewine	Lillie	1883	1939
Lewine	Minnie	1877	1962
Lewine	Harry	1875	1938
Lewine	Rudolph	1885	1935
Lewine	Idalia	1902	1978
Lisiekelee (?)	Julius	1845	1876
Loeb	S.		1891
Lubin	Irving	1910	1977
Lyon	Sarah B.	1892	1982
Lyon	Myer A.	1864	1949
Maas	Stanley	1886	1957
Mahler	Bertha P.	1875	1956
Mahler	George W.	1877	1956
Maier	Mae B.	1883	1963

Maier	Max	1871	1928
Malachowsky	Charles	1889	1960
Malachowsky	Babette	1851	1911
Malachowsky	Louis	1847	1907
Malachowsky	Jules	1884	1903
Malagowski	Sadie D.	1882	1885
Marcus	Isadore	1896	1977
Marcus	Sarah MEYER	1894	1971
Marcus	Jacob (James)	1881	1974
Marcus	Sarah LEESON	1886	1948
Marcus	Louis		1917
Marks	Julia Amelia	1916	1970
Marx	Florence ROSENBAUM	1882	1963
Marx	Marion M.	1875	1935
May	Regina	1829	1891
May	Moses G.	1860	1914
May	Gerson	1831	1875
Mayer	Samuel	1829	1888
Mehlinger	David	1875	1876
Mehlinger	Sarah	1825	1895
Mehlinger	Simon	1827	1877
Mehlinger	Meyer	1835	1888
Meyer	May M.	1873	1966
Meyer	Alice	1873	1966
Meyer	Gabe	1834	1919
Meyer	Carrie B.	1877	1944
Meyer	Joe C.	1877	1949
Meyer	Sol	1899	1949
Meyer	Emil	1856	1923
Meyer	Adolph	1849	1890
Meyer	Nettie Alice	1877	1962
Meyer	Isaac	1866	1866
Meyer	Rosalinda	1866	1868
Meyer	Virginia	1842	1866
Meyer	Henry	1864	1868
Meyer	Sol	1845	1878
Meyer	Joseph C.	1850	1881
Meyer	Abe	1833	1883
Meyer	Leopold	1838	1893
Michaelis	Jacob	1853	1910
Michaelis	Sophie	1849	1903
Mille	Agnes	1847	1910
Miller	Solomon	1845	1902
Miller	Emma	1847	1930

Miller	William	1875	1937
Miller	Hilbert		
Minsker	Abe	1877	1961
Minsker	Hennie Joseph	1892	1943
Mook	Bennie	1875	1877
Moore	Louis P.	1884	1950
Moore	Leah REINER	1891	1949
Moore	Amanda W.		1921
Moore	George B.	1863	1934
Moore	Sarah	1860	1921
Moore	Isaiah J.	1856	1926
Morris	Linda Frances	1943	1986
Nathan	Elise	1962	1962
Nathan	Victor	1865	1873
Nichols	Charles	1898	1913
Nichols	Wolf	1870	1913
Nichols	Rosa	1873	1911
Nordman	Albert James	1842	1878
Nordman	L. M.	1838	1879
Nussbaum	Samuel	1895	1968
Nussbaum	Jennie COHN	1903	1981
Oppenheimer	Leopold	1837	1872
Ottenheimer	Louis	1879	1912
Ottenheimer	Claudia	1879	1922
Parker	Brunette ALTSCHUL	1879	1966
Parker	Charles A.	1881	1939
Pfeffer	Edward W.	1895	1965
Pinkus	Leon	1903	1960
Pinkus	Lena H.	1881	1934
Pinkus	Isadore	1870	1959
Preisg ?	Edna EILBOTT		1969
Reinach	Carrie		1938
Reinach	Rena ALTSCHUL	1870	1901
Reinach	Bennie	1864	1866
Reinach	Marcus	1866	1875
Reinach	Lee	1843	1875
Reinach	Samuel	1836	1873
Reinach	Pauline	1869	1886
Reinach	Mose	1854	1923
Reinach	Aaron	1822	1895
Reinach	Eliza	1830	1901
Riesenberg	Zelda S.	1916	1975
Riesenberg	Harry	1908	1981
Riesenberg	Ben J.	1938	1967
Riesenberg	Bertha	1881	1941

Riesenberg	Herman L.	1936	1957
Riesenberg	Sol	1905	1976
Riesenberg	Louis	1909	1981
Riesenberg	Fannie	1904	1916
Rosen	Morris H.	1908	1985
Rosen	Marsha Frances	1943	1969
Rosenau	Samuel	1896	1977

VANNDALE, CROSS COUNTY, ARKANSAS, 1889-1890

The following information relating to the first county seat of Cross County, Arkansas, comes from *Polk's Arkansas State Gazetteer and Business Directory, 1888-1889, Vol. II*, p. 626, in the microfilm collection of the Arkansas State Archives Roll, MG-1476. Vanndale is now a small rural community on State Highway One several miles north of Wynne in Cross County. Its post office was established in 1867 and named Cleburne, in honor of Civil War general Patrick Cleburne. It served as the county seat for the new county of Cross from then until 1868. In 1879, its name was changed to Vanndale in honor of John M. Vann, the postmaster.¹ It served once again as the Cross County seat from 1884 to 1903.² The current county seat of Cross County is Wynne, Arkansas. The following information is important in the light of the destruction of the 1890 U. S. Census.

“**VANNDALE.** A village on the Helena branch of the Missouri Pacific Railroad, in Searcy Township, Cross County, of which it is the county seat, 112 miles northeast of Little Rock. Forrest City is the nearest banking point. It contains a steam grist mill, a cotton gin, a church, and a district school. Cotton shipped. A weekly newspaper called the *Cross County Chronicle*, is published here. Population, 400. Telephone, Western Union Express, Southern and Pacific. Mail daily. J. M. Vann, postmaster.”

Applewhite, J. and Co., general store,
 Applewhite and Thomas, stair builders
 and grist mill,
 Barker, R. A., carpenter,
 Black, J. D., lawyer,
 Black, W. M., real estate,
 Black and Ewin, general store,
 Blakey, G. W., express and railroad,
 Brittain, Rev. R. T., Methodist,
 Calhoun, C. H., painter,
 Cross County Chronicle, Black and
 Levesque publishers,
 Foote, W. R., general store and justice,
 Frazier, W. P., saloon,
 Gardner Bros. live stock

Griffin, George W., blacksmith and wood
 workman,
 Hare, Dr. T. D., druggist,
 Hare, T. E., lawyer,
 Highlander, W. D., teacher,
 Killough, J. W., hotel and live stock,
 Krum, L. W., saw mill,
 Lands, L. K., dentist,
 Legg, W. N, hotel,
 Lewellen Bros., livery, gin and saw mill,
 Lewellen, J. W., grist mill and gin,
 McKee, J. D., physician,
 McKee, Mdme. C. H., milliner.
 Massey, J. W., justice of the peace,
 May and Malone, druggist,

¹ Russell P. Baker, *Arkansas Post Offices From Memdag to Norsk: A Historical Directory 1832-1990* (2006), pp. 49 and 193.

² <https://encyclopediaofarkansas.net/entries/cross-county-763/>.

Mercer, R. M., carpenter,
Oliver, E. S., blacksmith,
Pine, M., carpenter,
Pinnol, E., carpenter,
Procter, W. H., undertaker,
Roberts, H. H., hotel,
Rolfe, E. A., livery,
Rolfe, J. S., hotel,

Samuels, Joseph, general store,
Smith, R. A., general store,
Vann, J. M., general store,
Vogel, Charles, painter,
Whitby, D. E., carpenter,
Williams Bros., saw mill.



https://www.google.com/search?tbm=isch&source=hp&biw=1193&bih=647&ei=z8HRXJe_G62c_Qbc0qPIDg&q=arkansas+female+college+little+rock&oq=arkansas+female+college+little+rock&gs_l=img.12...2489.12287..14664...1.0..0.151.4047.10j26.....1....1..gws-wiz-img.....0..0j0i8i30j0i24.7ngDiOYSrzo#imgrc=BuqfgQlkrsl_zM:

STUDENTS OF THE ARKANSAS FEMALE COLLEGE, LITTLE ROCK, ARKANSAS, 1876-1877

In 1872, Little Rock's Arkansas Female College was formed as an institute of higher education for young women by the Little Rock and White River conferences of the Methodist Episcopal Church, South in Arkansas. From that date until 1889 it was located in downtown Little Rock in the "elegant" mansion built many years before by General Albert Pike. Myra C. Warner was the principal and teacher at the college for many years.¹

The following information comes from the Second Annual Catalogue for the school published for the "Collegiate Year Ending June 7, 1876," and found in the Arkansas State Archives' Small Manuscript Collection, MG00200 AHC. The students at the college studied Latin, French, German, and vocal and instrumental music.

Alumna

Miss Daisy Cantrell Little Rock, Arkansas, graduated in 1875,

Second Intermediate Class

Miss Lorena A. Miller, Ellsworth, Arkansas,

¹ See archives.arkansas.gov/research/browse-archival-collections.aspx?id=3397. The Arkansas State Archives has a large manuscript collection of material relating to this institution..

First Intermediate Class

Mattie Blankeney, Mabelvale,
Arkansas,
Cornie Brandon, Little Rock,
Arkansas,
Lizzie S. Pirtle, Little Rock,
Arkansas,
Lula C. Reid, Tulip, Arkansas,
Ida E. Sparks, Little Rock,
Arkansas,

Nettie P. Steele, Little Rock,
Arkansas,
Sue C. Turner, Searcy, Arkansas,
Mollie Wittenberg, Little Rock,
Arkansas,
M. Janie Woodruff, Little Rock,
Arkansas,
Nannie Wright, Little Rock,
Arkansas.

Junior Class

Hannah E. Basham, Clarksville,
Arkansas,
Cora A. Birdsall, Jerseyville,
Illinois,
Maggie Caldwell, Little Rock,
Arkansas,
Miriam Dodge, Little Rock,
Arkansas,
Fannie M. Dolive, Little Rock,
Arkansas,
Eva A. Edwards, Little Rock,
Arkansas,
Laura Fields, Little Rock,
Arkansas,
Lizzie Gans, Little Rock,
Arkansas,
Sabra J. Hall, Benton, Arkansas,
Hattie Hezekiah, Little Rock,
Arkansas,

Katie C. Hooper, Little Rock,
Arkansas,
Sue Jones, Jacksonport,
Arkansas.
Sallie I. Letson, Brinkley,
Arkansas,
Fannie Logan, Jacksonport,
Arkansas,
Inez B. Scott, Little Rock,
Arkansas,
Nona T. Scull, Little Rock,
Arkansas,
Ella Thomas, Hickory Plains,
Arkansas,
Lula M. Turner, Mineral Springs,
Arkansas,
Julia Mac Warner, Little Rock,
Arkansas.

Second Academic Class

Mollie C. Barron, Little Rock,
Arkansas,
I. May. Beauchamp,
Arkadelphia, Arkansas,
Bettie B. Bell, Hamburg,
Arkansas,
Rachel Bloch, Little Rock,
Arkansas,
Nettie G. Bostick, Little Rock,
Arkansas
Annie Bourne, Little Rock,
Arkansas

Ida A. Brookfield, Wittsburg,
Arkansas,
Isadore Cantrell, Little Rock,
Arkansas
Julietta Churchill, Little Rock,
Arkansas
Josephine Clendenin, Little
Rock, Arkansas
Coretta Cook, Little Rock,
Arkansas
M. Virginia Cook, Little Rock,
Arkansas

Daisy Dolive, Little Rock,
Arkansas
Mollie H. Horton, Fair View,
Arkansas,
Mattie D. King, Red Bluff,
Arkansas,
Josephine E. Levy, Little Rock,
Arkansas,
Lillian L. Mayberry, Duval's
Bluff, Arkansas.
Kansas D. McCray, Benton,
Arkansas,
Annie McNeil, Red Bluff,
Arkansas,
Ida Navra, Little Rock, Arkansas,
Libbie C. Patten, Little Rock,
Arkansas,

Eliza H. Pope, Jenkins Ferry,
Arkansas,
Lou E. Smith, Little Rock,
Arkansas,
Georgie C. Watkins, Little Rock,
Arkansas,
Lucy B. Wiggs, Little Rock,
Arkansas,
Mary Williams, Little Rock,
Arkansas,
Clara C. Wisdom, St. Louis,
Missouri,
Annie Wittenberg, Little Rock,
Arkansas,
Sallie L. Wright, Little Rock,
Arkansas.

First Academic Class

Allen, Mattie L., Pleasant Plains,
Arkansas,
Badgett, Fannie E., Little Rock,
Arkansas,
Bailey, Birdie S., Memphis,
Tennessee,
Beavers, M. Dixie, Boonville,
Arkansas,
Carter, Bonnie J. Ozark,
Arkansas,
Culpepper, Fannie L., Little
Rock, Arkansas,
Darden, Emily E., Memphis,
Tennessee,
Dorriss, Maggie E., Pine Bluff,
Arkansas,
Eakin, Anna B. Washington,
Arkansas,
Ferrell, Fannie, Arkansas City,
Arkansas,
Ford, Ellen, Lonoke, Arkansas,
Frazier, Emma B., Calvert,
Texas,
Henny, Chloe, Little Rock,
Arkansas,
Hester, Fannie M., Adamsburg.
Arkansas,

Hill, Georgie F., Pendleton's
Landing, Arkansas,
Knight, Little Rock, Arkansas,
Letson, Bettie D., Brinkley,
Arkansas,
Little, Lula, Little Rock,
Arkansas,
Martin, Mollieo, Little Rock,
Arkansas,
McCowan, Hannah, Little Rock,
Arkansas,
McNeal, Barbara, Little Rock,
Arkansas,
Moore, Mary L, Little Rock,
Arkansas,
Pleasants, Katie, Cooper's
Landing, Arkansas,
Rector, Ernestine, Little Rock,
Arkansas,
Reed, Susie, Clarksville,
Arkansas,
Skipwith, Laura B., Little Rock,
Arkansas,
Smith, Mary E., DeWitt,
Arkansas,
Stevenson, Eva P., Little Rock,
Stewart, Carrie A.,
Murfreesboro, Tennessee,

Townsend, Cecilia, Little Rock,
Arkansas,
Wiggs, Fannie P., Little Rock,
Arkansas,

Third Primary Class

Bailey, Emma P., Memphis,
Tennessee,
Baker, Josephine R., Little Rock,
Arkansas,
Bossert, Mattie, Little Rock,
Arkansas,
Burton, Annie, Little Rock,
Arkansas,
Carroll, Fannie F., Little Rock,
Arkansas,
Childress, Amanda R,
Willamette, Arkansas,
Cribbs, Lee F. G., Little Rock,
Arkansas,
Galloway, Lily A., Little Rock,
Arkansas,
Gantt, Annie, Pine Bluff,
Arkansas,
Gay, Lula, Little Rock, Arkansas,
Gay, Mamie W., Little Rock,
Arkansas,
Gray, Mattie W., Hot Springs,
Arkansas,

Second Primary Class

Alden, Mamie L., Little Rock,
Arkansas,
Barron, Loretta E., Little Rock,
Arkansas,
Black, Lena M., Brinkley,
Arkansas,
Brashear, Miriam, Little Rock,
Arkansas,
Carroll, Susie, Little Rock,
Arkansas,
Cook, A. Laura, DeValls Bluff,
Arkansas,
Lewis, Ida, Little Rock,
Arkansas,
Lewis, Joanna, Little Rock,
Arkansas,

Williams, Sallie, Austin,
Arkansas.

Griffen, Daisy, Hot Springs,
Arkansas,
Hays, Laura K., Little Rock,
Arkansas,
Henry, Hattie L., Little Rock,
Arkansas,
Killian, Ida M., Little Rock,
Arkansas,
Lenox, Addie F., Pendleton,
Arkansas,
Lewis, Susan, Little Rock,
Arkansas,
Mainard, Diana J., Natural Steps,
Arkansas,
Moore, Addie M., Little Rock,
Arkansas,
Nicks, Matilda F., Swan Lake,
Arkansas,
Pennington, Lula A., Little Rock,
Arkansas,
Watkins, Ida, Little Rock,
Arkansas.

Cook, A. Viola, Little Rock,
Arkansas,
Cooper, Frances V., Cooper's
Landing, Arkansas,
Davis, Mary B., Little Rock,
Arkansas,
Harbert, Corinne, Columbus,
Texas,
Hughes, Sallie A., Clarendon,
Arkansas,

Lewis, M. Corinne C., Little
Rock, Arkansas,
May, Fannie J., Clarksville,
Arkansas,

Sauter, Amanda L., Little Rock,
Arkansas,
Sauter, Little Rock, Arkansas,
St. Clair, Annie J., Austin,
Arkansas,
Stevenson, Mollie C., Little
Rock, Arkansas,

Stevenson, Fannie A., Little
Rock, Arkansas,
Woodruff, Willie, Little Rock,
Arkansas,
Wright, Dickie G., Little Rock,
Arkansas.

First Primary Class

Cohen, Emma, Little Rock,
Arkansas,
Cohen, Joanna, Little Rock,
Arkansas,
Colburn, Virgie, Tulip, Arkansas,
Cribbs, Salinar, Little Rock,
Arkansas,
Joyner, Fannie, Little Rock,
Arkansas,

Kempner, Sarah, Little Rock,
Arkansas,
Loughborough, Hope, Little
Rock, Arkansas,
St. Clair, Lizzie F., Austin,
Arkansas.

Irregular and Special [Students]

Brisbin, Minnie, Little Rock,
Arkansas,
Davis, Ella, Little Rock,
Arkansas,
Gatlin, Susie, Little Rock,
Arkansas,
Harbert, De Liesline, Columbus,
Texas,
Lews Betty G., Little Rock,
Arkansas,
Loughborough, Jentie, Little
Rock, Arkansas,
McAlister, Willie P. Lutesville,
Missouri,
McAlmont, Leon A. H., Little
Rock, Arkansas,

McGurgin, Miss Little Rock,
Arkansas,
Morehouse, M. M., Little Rock,
Arkansas,
Palmer, Mina, Little Rock,
Arkansas,
Parham, A. Goodwin, Little
Rock, Arkansas,
Sauter, Ellen Mrs., Little Rock,
Arkansas,
Vaughan, Myra C. Mrs., Little
Rock, Arkansas,
Williams, Dora, Little Rock,
Arkansas,
Woodruff, C. C. Mrs., Little
Rock, Arkansas.

ARKANSAS GENEALOGICAL QUERIES

AGS members may submit as many free Arkansas genealogical queries for publication in this quarterly as they wish during the year. The queries will appear in the order in which they are received. Each should relate to an Arkansas family or location. Be sure to mention the county or region of Arkansas where the family lived, as well as full names and dates. In addition, submitters must include contact information and email address, if possible. Follow the format used below. Mail your queries to AGS, P. O. Box 26374, Little Rock, Arkansas 72221-6374. *Please print clearly.*

DEWOODY-TREPLEY: Seeking information on the parent/child relationship between George William Clifton DeWoody (February 27, 1798-December 1854) of Ouachita County and William Hampton DeWoody (November 16, 1821-July 23, 1883) of Garland County. Also seeking information on Jason L. Trepley (1829-1873) of Clark County. *Joseph DeWoody, P. O. Box 471288, Fort Worth, Texas 76147, JPDCDewoodyoil.com.*

BENBROOK FAMILY-In Morgan's *1820 Census of the Territory of Arkansas (Reconstruction)* Seaburn Benbrook is listed in an area that would soon become Phillips County. I believe that he is the same person as Charles Seaburn Benbrook, who was the father of Elbert and Henry Benbrook who were living in Izard County by 1831-1832. I need additional information. *Frances Hook Jernigan, 52 Colony Road, Little Rock, Arkansas, 72227-2947, melrose50@aol.com.*

NOLAN-ROUSH-Seeking parents of Nancy (Nana) Nolan Roush (1853-1931) who lived in Greene and Clay counties in Arkansas. Her first husband was John Patrick Nolan and her second husband was Daniel Roush. She is buried in St. Bernard's Cemetery. *Nancy Bartlett, 1921 Canal Pointe, Little Rock, Arkansas 72202, nb7754@sbcglobal.net.*

WATERS-Looking for descendants of Andrew Adams or George Washington Waters who lived in Phillips and Lee counties before 1890. *Bill Adams, P. O. Box Jacksonville, Arkansas 72078, billadams1950@gmail.com.*

WHITE-SYKES-Seeking information on Sarah Bishop White of Ozan and Loy Sykes of Little Rock. *Bill Sykes, 6408 Larson Ct., Kansas City, Missouri 64133 Brag1@juno.com.*

WILLIAMS-SLADE-Seeking information on Mary Ann Broadnax Williams (1871-d.?), the wife of Malvin Lee Slade (b. 1865-d. 1955). The family lived in Arkansas and Oakland, Louisiana. They married in 1889. She has not been identified on any U.S. census record. *La Donna Marie Leazer, 4475 N. 45th Street, Milwaukee, Wisconsin 53218, ladonnatravels@gmail.com.*

BOOKS AND PUBLICATION REVIEWS

The Arkansas Genealogical Society welcomes opportunities to review new and reprinted books, pamphlets, and other publications relating to genealogy, family history, local and community history, especially those concerning Arkansas and southern locations, families, and events. Send review copies to AGS at P. O. Box 26374, Little Rock, Arkansas 72221-6374. Be sure to include complete pricing and ordering information with each item. After review, volumes will be passed along to the Arkansas State Archives in Little Rock or other suitable institutions.

The Sharp County Historical Society has reprinted Caruth Shaver Moore's, *"Early History of Sharp County,"* 75 pages, soft-cover, plus 8 pages of original photos. The book has been out of print since 1979. It contains the original *Early History of Sharp County* text, plus a surname and place name index and a table of contents. Copies can be picked up for \$20 each at Sharp County libraries at Ash Flat, Evening Shade, Cave City, Hardy, and Williford. Copies can also be ordered by mail from the Sharp County Historical Society, P. O. Box 185, Ash Flat, Arkansas 72513, Attention: Dwight Sharp. The mail order price is \$20 plus \$3.30 postage. Checks should be made out to the Sharp County Historical Society.

Theresa A. Clark, *Thomas Cemetery, North Little Rock, Pulaski County, Arkansas, Interments, Obituaries, and Articles* (2017), soft cover, 235 pages, and full name index. This well-done and informative volume is more than just a list of some 700 interments in a small urban cemetery. It is a labor of love that contains a remarkable collection of information on these often-related individuals. The Thomas Cemetery, began about 1876, is one of the oldest cemeteries in North Little Rock, Arkansas. It began as a family burial ground. However, over the years, as the community dynamics changed, the cemetery fell into disuse and then neglect. Recently the newly formed Thomas Cemetery Association began an effort to rescue and restore this historic graveyard. This book is one of its fund-raising efforts. It is divided into three sections, Interments, Obituaries, and Articles. The author has searched through many files of central Arkansas newspapers and assembled a notable collection of death notices, obituaries, and related articles. All funds from the sale of this volume will be used to assist the Association's efforts. The price is \$25.00. Order from Teresa Clark, 13 Oak Tree Circle, North Little Rock, Arkansas 72116, tca1876@gmail.com.

John Grenham, *Tracing your Irish Ancestors, 5th edition* (2019), hard copy, 650 pages, maps, illustrations, and full index. Many of our readers who have ancestors who emigrated from the Irish Republic or from Northern Ireland will be interested in this long-awaited, new printing of Grenham's important bestselling work. It is now available in a newly revised and expanded American edition. The author, who has been a professional genealogist since 1981, is a frequent presenter on the TV series, *Who Do You Think You Are?* In this work, he combines the best features of a textbook and a reference volume. It is designed especially for American researchers who are often dismayed when they find out that the only complete censuses of Ireland are for 1901 and 1911. The author discusses where to find additional supplementary records. He explores an extensive number of online sources, those in archival institutions in both the republic and Northern Ireland, as well as records found in the U. S., U. K., Canada, and Australia archives. He also discusses in detail how to locate and use existing Irish censuses, church records, and property and valuation records, as well as deed records and newspaper files. A large portion of the volume is given over to a detailed list of genealogical sources for individual Irish counties, as well as where to find and use registers kept by local Roman Catholic Parishes. The author not only tells his readers what records are available but why they were created. His discussions of history of various Christian churches in Ireland are very enlightening. This new edition is a must have for all serious Irish researchers. The price is \$38.50 plus tax and postage. A paperback edition is also available. Check at genealogical.com for the current price. Order from Genealogical.Com, 3600 Clipper Mill Rd., Suite 229, Baltimore, Maryland 21211-1953, 1-800-296-6687.

ARKANSAS ANCESTRY CERTIFICATES

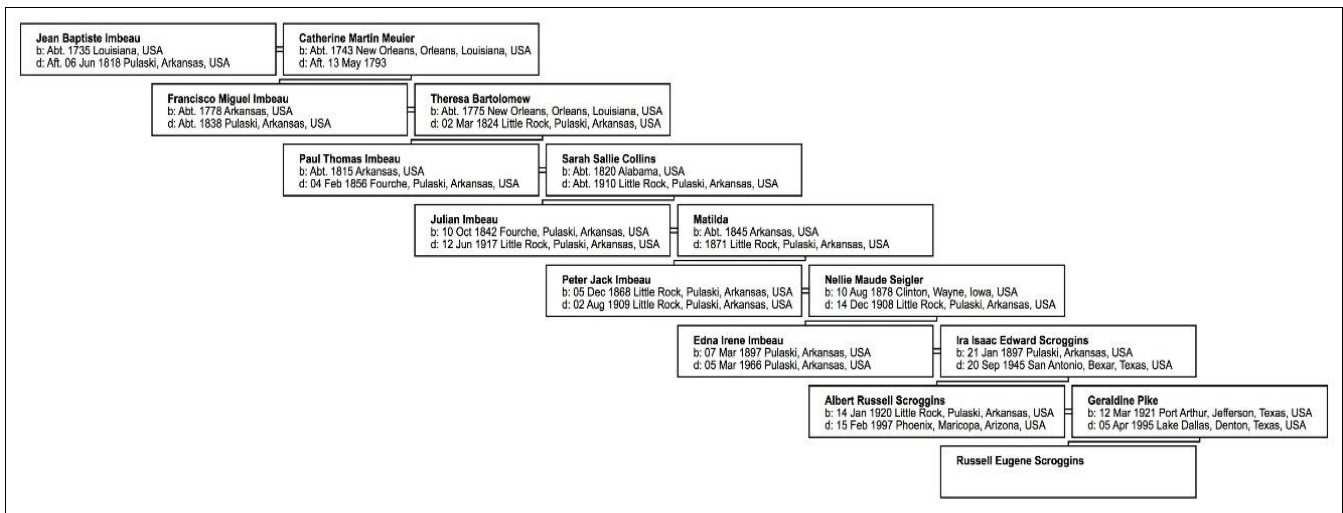
Our popular *AGS Certificates of Arkansas Ancestry* are still available to all qualified readers. Membership in AGS is not required. Everyone with early Arkansas roots is encouraged to apply. Visit our website at <http://www.agsgenealogy.org/ancestrycert/default.html> for instructions, fees, and downloadable application forms. Follow the directions on the forms. Email AskAGS@agsgenealogy.org with your questions. For best results submit no more than three applications at a time.

Certificates are available for the following categories:

- *Colonial*--For an ancestor who resided in Arkansas prior to January 1, 1804.
- *Territorial*--For an ancestor who resided in Arkansas prior to June 15, 1836.
- *Antebellum*--For an ancestor who resided in Arkansas prior to May 6, 1861.
- *Civil War Ancestry*--For an ancestor who served in a Confederate or Union Arkansas unit between 1861 and 1865, or applied for an Arkansas Confederate pension, or whose widow applied for a pension, or a Union soldier or soldier's widow who applied for a U.S. pension while living in Arkansas.
- *Nineteenth Century*--For an ancestor who resided in Arkansas prior to December 31, 1900.

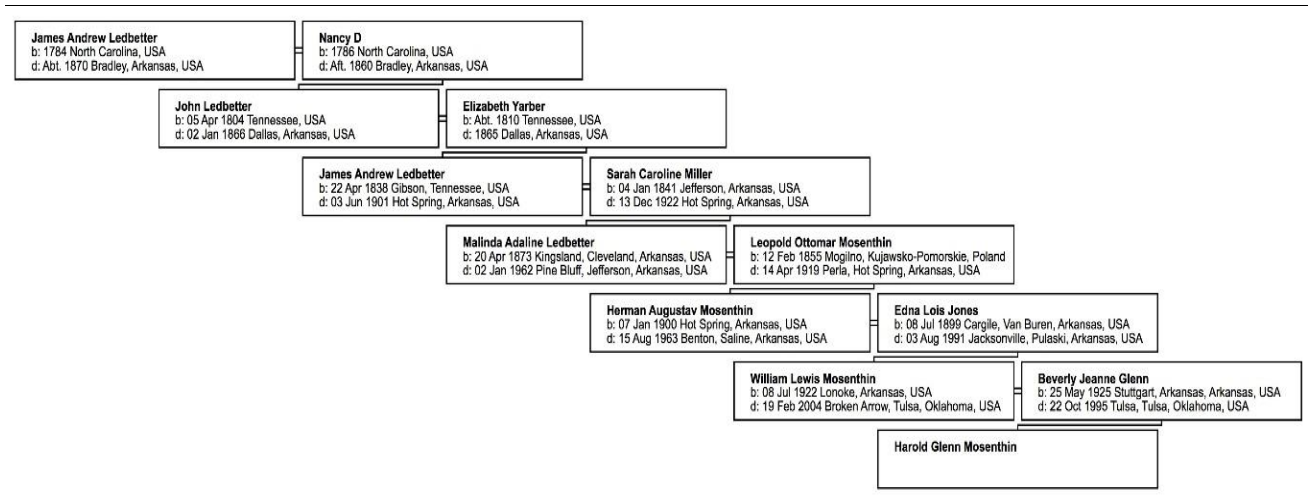
Arkansas Colonial Ancestry Certificate
Russell Eugene Scroggins
 4605 Elm Branch Dr., Arlington, TX 76017
 817-797-3695, rescroggins@sbcglobal.net

Russell Eugene Scroggins received a Certificate of Arkansas Ancestry for the Colonial period based on documentation submitted for his colonial ancestor, **Jean Baptiste Imbeau**, who was in Arkansas County, Arkansas prior to January 1, 1804.



Arkansas Civil War Ancestry Certificate,
Submitted by Harold Glenn Mosenthin
 1024 Hope Ln, Searcy, AR 72143
 870-710-1240, hgmosenthin@gmail.com

Harold Glenn Mosenthin received a Certificate of Arkansas Ancestry for the Civil War period based on documentation submitted for his Civil War ancestor, **James Andrew Ledbetter**, who served in an Arkansas **Confederate** unit during the American Civil War 1861–1865 or a veteran who received a Civil War pension (Union) while living in the State of Arkansas.



INDEX

- | | | | |
|---------------------|--------------------|--------------------|---------------------|
| Abbott | Beno, 26 | Hannah, 27 | Sarah R., 27 |
| E. B., 18, 20, 23 | Julia, 26 | Leopold, 27 | Baker |
| Abrams | Louis, 26 | Atkins | Jacob, 27 |
| Myron L., 26 | Altman | Zealous, 5 | Josephine R., 41 |
| Adams | Martin, 19, 21, 24 | Austin | Russell P., 3, 16 |
| Andrew A., 43 | Altschul | Samuel W., 11 | Thomas E., 4 |
| Bill, 43 | Adolph, 26 | Bachalor | Baldwin |
| John, 9 | Bertrand, 26 | William, 24 | Richard F., 12 |
| John H., 8 | Blanche, 26 | William, 22 | Baley |
| Samuel, 17, 20 | Brunette, 36 | Badgett | Benjamin S., 13 |
| Aday | Fannie M., 26 | Fannie E., 40 | Ballard |
| Washington, 19 | Flora S., 26 | Baggett | Stephen, 17 |
| William R., 19, 21, | Jacob L., 26 | John, 18, 23 | Banks |
| 23 | Jeanette, 26 | Washington, 22, 24 | Robert M., 27 |
| Addison | Joseph S., 26 | Bailey | Barker |
| John, 8 | Julia, 26 | Albert G., 14 | R. A., 37 |
| Albright | L. R., Jr., 26 | Birdie S., 40 | Barned |
| Peany, 24 | L. R., Sr., 26 | Emma P., 41 | D. T., 24 |
| Alden | Meyer, 26 | Baim | Barnes |
| Manie L., 41 | Morris, 26 | Aaron, 27 | D. T., 22 |
| Alexander | Rena, 36 | Abe, 27 | Jesse, 24 |
| Joseph H., 8 | Sam, 26 | Charles, 27 | John C., 19, 21, 24 |
| Allbright | Sam J., 26 | Charles S., 27 | T. G., 13 |
| May, 26 | Sol, 26 | Dora, 27 | Barre |
| Peany, 22 | Anderson | Gene, 27 | Abe, 27 |
| William, 19 | Martin, 9 | Hattie L., 27 | Dora, 27 |
| Allen | Applewhtie | Jacob, 27 | Samuel, 27 |
| J. L., 19, 21, 24 | J., 37 | Leo A., 27 | Barron |
| Mattie L., 40 | Artarbery | Robert M., 27 | Loretta E., 41 |
| Alzheimer | Thomas, 4 | Samuel, 27 | Mollie C., 39 |
| Belle M., 26 | Aschaffenberg | Samuel B., 27 | Barrow |
| Ben J., 26 | David, 27 | | J., 18, 21 |

- Barth
Hattie L., 27
- Bartlett
Nancy, 43
- Bartolonew
Theresa, 45
- Basham
Hannah E., 39
- Baskin
James M., 13
- Bates
Marvin, 14
- Bean
Henry J., 4
- Bearden
O, K., 18, 20, 23
- Bearsch
Sam R., 27
- Beaty
Lee, 18, 20, 23
- Beauchamp
I. M., 39
- Beavers
M. Dixie, 40
- Becker
Flora F., 27
- Bell
Betties B., 39
Hattie, 27
J. P., 18, 21
R. B., 18, 21
W. W., 18, 21, 23
- Benbrook
Charles S., 43
Elbert., 43
Henry, 43
Seaburn, 43
- Bennett
Amelia, 27
Marcus, 34
Rosa, 34
- Benson
Browney, 27
Herman, 27
Jones, 27
Meyer, 27
Sam, 27
Tillie, 27
- Benton
J. N., 9
- Berlin
David B., 27
Etta J., 27
- Bernath
Adolph, 27
Henry, 27
Joseph, 27
Lillie, 27
Louise, 27
Moses, 27
Sarah, 27
Vivtor, 27
- Berryman
George W., 11
- Bickard
Leopold, 27
- Billings
E. F., 18, 20, 23
- Bilsky
Arthur, 28
Bessie, 27
Essie, 28
Jeanette, 28
Maurice, 28
Sarah, 27
Solomon, 28
William W., 28
- Bird
Thomas B., 5
- Birdsall
Cora A., 39
- Bishop
J. J., 18, 20, 23
- Biuori, 28
- Black
Alvin, 3
J. D., 37
Lena M., 41
Rufus H., 12
W. M., 37
- Blakemore
William T., 11
- Blakey
G. W., 37
- Blankeney
Mattie, 39
- Blau
Lawrence E., 28
Sheldon, 28
Yetta, 28
- Bleiweiss
Albert, 28
- Blenton
Claborn, 8
- Bloch
Rachel, 39
- Block
Fred S., 28
Hattie, 28
Pouis, 28
- Bloom
Bennett, 28
Bessie I., 28
Bloomah J., 28
Charles, 28
Fannie, 28
Harrietta, 28
Ira D. Sr., 28
Jacob, 28
Jacob J., 28
Jamie, 28
John, 28
Ruth L., 28
Sammie F., 28
- Bloomfield
Essie, 28
- Blum
Amelia A., 28
August, 28
Belle M., 28
Jahannetta, 28
Minna, 28
- Blute
Moses, 28
- Bluthenthal
Adolph, 28
Bertha B., 28
Bessie, 29
Carolyn H., 28
D. S., 29
David, 29
David M., 29
David S., 28
Henriette, 28
Herb M., 29
Julian, 29
Ray, 28
Rebecca B., 29
Samuel, 28
Sarah, 29
Sophie S., 29
Vivian, 28
- Booker
John F., 9
- Bookman
Lester, 29
- Boon
Squire, 7
- Booth
William H., 6
- Bossert
Mattie, 41
- Bostick
Nettie G., 39
- Bottoms
J. C., 18, 21
- Bourne
Annie, 39
- Bowland
Philip, 5
- Bowles
Green, 19, 21, 23
- Boyd
Elias F., 5
- Bram
Annie, 29
Barnett, 29
David, 29
Dinah, 29
Harris, 29
Jennie I., 29
Joseph B., 29
Louis, 29
Meyer, 29
Miriam R., 29
Reuben M., 29
Rosa, 29
Sarah, 27
Saul, 29
- Brandon
Cornie, 39
- Brashear
Mariam, 41
- Bray
William N., 11
- Brisbin
Minnie, 42
- Brittain
R. T. Rev., 37
- Bromberger
Caroline, 29
Nettie, 29
Simon, 29
- Brookfield

- Ida A., 39
 Brown
 Florance M., 29
 George R., 15
 J. J., 7
 James, 22
 Jane, 17
 Joseph, 17, 20, 22
 Moses, 29
 Pauline, 29
 Rosa, 34
 Ruth L., 28
 Thomas J., 6
 William H., 19
 Browning
 Isaac, 19, 21, 24
 Brumeley
 James, 5
 Brumley
 James W., 19, 21,
 24
 Brummett
 N. G., 17, 20, 22
 Thomas J., 21, 24
 Brummiatt
 Thomas J., 19
 Bryant
 Dudly, 19, 21, 24
 W. C., 18, 20, 23
 Bryles
 J. A., 18, 21, 23
 Buggett
 John, 20
 Bullard
 James, 20, 22
 Bumgarner
 Susan, 17, 22
 Bungarten
 Susan, 19
 Burns
 Jesse, 22
 Burton
 Annie, 41
 Busby
 James L., 22, 24
 Bush
 Henry, 18
 Caldwell
 Maggie, 39
 Calhoun
 C. H., 37
 Calvert
 Jeremiah, 13
 Camden
 Gertrude E., 29
 Campbell
 James L., 21, 24
 William P., 14
 Canthers
 Hugh A., 20, 23
 Cantrell
 Daisy, 38
 Isadore, 39
 Caplan
 Ben, 29
 Carr
 T. L., 18, 20, 23
 Carroll
 Fannie F., 41
 Susie, 41
 Carter
 Bonnie J., 40
 Reuben A., 14
 Cates
 Czar, 6
 William J., 5
 Causby
 J. H., 23
 Cearley
 A. J., 17
 Cearly
 A. J., 20, 22
 Chambers
 Thomas G., 6
 Chandler
 H. B., 15
 Childress
 Amanda R., 41
 Churchill
 Julietta, 39
 Clair
 Annie J., 42
 Clark
 Alphius, 24
 Alphues M., 22
 Theresa A., 44
 Willington, 21, 24
 Clary
 Nathaniel J., 14
 Claten
 Thomas, 6
 Clay
 H., 18, 20, 23
 Cleburne
 Patrick, 37
 Clendenin
 Josephine, 39
 Cohen
 Easter L., 29
 Enna, 42
 Joanna, 42
 Joseph, 29
 Samuel D., 29
 Sarah R., 29
 Cohn
 Jennie, 36
 Colburn
 Virgie, 42
 Coldman
 Annie, 29
 Cole
 Henry H., 8
 James, 19, 21, 24
 Coleman
 Moses K., 17, 20
 Collaway
 James M., 13
 Collins
 James, 17, 20, 22
 John W., 4
 Coload
 Jeremiah H., 7
 Colquitt
 John W., 7
 Conger
 John L., 18
 Cook
 A. L., 41
 Amelia, 29
 Coretta, 39
 Evelyn, 30
 Fannie, 29
 Henrietta H., 30
 Henry, 30
 James C., 18, 20,
 23
 Jerome H., 30
 Joel, 29
 M. V., 39
 Meyer C., 30
 Minnie H., 29
 Nathan L., 29
 Rebecca, 30
 Sam H., 30
 Cooper
 Frances V., 41
 Cordell
 J. A., 17, 20, 22
 Corder
 Louis M., 14
 Cotrell
 James, 18, 23
 Cotrill
 James, 20
 Craig
 James, 9
 Cribbs
 Lee F. G., 41
 Salinar, 42
 Crim
 Evelyn, 30
 Crockaran
 Prayter R., 5
 Cross
 Charles J., 5
 Crossett
 Andrew, 18, 21
 James M., 14
 William, 18, 20, 23
 Culpepper
 Elias, 18, 20, 23
 Fannie L., 40
 Daniel
 W. T., 21, 23
 William T., 18
 Daniels
 J. A., 18, 20, 23
 Dante
 Sol, 30
 Dardanne
 John, 19
 L. L., 19
 Darden
 Emily E., 40
 Dardenne
 Bart, 22
 John, 17
 L. L., 17
 Vitol, 19
 Dardennie
 L. L., 22
 Darderne
 Vilot, 21, 24
 Darn

Thomas, 21, 23	F. M., 21, 24	Engelberger	Ford
Darnenne	Dunn	Chuck, 3	Ellen, 40
Bart, 24	Thomas, 19	Englaender	Forman
Davis	Dyre	Napthalie, 31	Francis, 5
B. F., 17, 19, 22	David, 17, 19, 22	Englander	Fowles
Ella, 42	Dyson	Louis, 31	Minette, 31
Fannie, 30	L., 22, 24	Yetta, 31	Fox
Frederica R., 30	Eakin	Ensign	Caroline, 31
Louis, 30	Anna B., 40	William M., 8	Morris, 31
Mary B., 41	Easter	Evans	Fragin
Saul R., 30	Thomas H., 6	James M., 6	Mary, 24
De Baun	Edwards	John J., 10	Frank
James, 16	Eva A., 39	Ewin	Bertha, 31
DeLacy	Egell	Mr., 37	George W., 7
Morgan, 17, 19, 22	John G., 22, 24	Ewing	Gussie, 31
Derryberry	Eilbott	J. C., 12	Sarah, 31
J., 18, 21, 23	Edna, 36	Faller	Frankland
Deutsch	Elias, 30	Herman, 31	Lizzie, 31
Charles, 30	Fannie M., 30	Faught	Mary, 31
Rebecca, 30	Fay J., 30	Ely H., 22, 24	Solomon, 31
Reginald, 30	Garland G., 30	Faulkner	Franklin
DeWoody	Gerson L., 30	W. F., 20, 22	Alice, 31
George W., 43	Henrietta L., 30	W. F. C., 17	Ben, 31
Joseph, 43	Leola, 30	Fellon	David L., 31
William H., 43	Leon, 30	Isom, 21, 23	Flora, 27
Dodge	Lucille, 30	Ferrell	Goldina H., 31
Miriam, 39	Minnie M., 30	Fannie, 40	Henry, 31
Dodson	Moses, 30	Festinger	James G., 31
F. E. Rev., 25	Pauline I., 30	Monroe M., 31	Ray, 31
Dolive	Reginald, 30	Fields	Rebecca, 31
Daisy, 40	Sadie M., 30	Laura, 39	Rose, 31
Fannie M., 39	Eiseman	Fies	Sam, 31
Dorman	Mariam F., 30	Adel, 31	Samuel, 31
Allen, 22, 24	Eisenkramer	Henry, 31	Sarah W., 31
Dorriss	Bessie C., 30	Jacob, 31	Sol, 31
Maggie E., 40	Gus, 30	Pagmir, 31	Frazier
Douglass	Hubert, 30	Samuel, 31	Emma B., 40
Jesse, 7	Max, 30	Fink	Mary E., 17
Dreidel	Minnie L., 30	Nathan, 31	W. P., 37
Lillian, 30	Rena, 30	Rose B., 31	Freeman
Dreyfus	William, 30	Fischer	A. J., 22, 24
Annie F., 30	Elison	Vera B., 31	Thomas, 17, 19, 22
Bertha, 30	Elizabeth, 17	Fisher	Freiberg
David S., 30	Elle	David, 18, 20, 23	Gertrude, 32
Ferdinand, 30	P., 31	Fleisig	Friedman
H. A., 30	Ellis	Charles, 31	Lena, 32
Isaac, 30	Queen V., 26	Mollie, 31	Matilda, 32
Minnie F., 30	William A., 11	Flynn	Samuel, 32
Rosina, 30	Ellison	David, 17, 20, 22	Fuld
Ruth L., 28	Elizabeth, 20, 22	Foote	Rose, 31
Dunham	Sarah, 31	W. R., 37	Furst

- Samuel, 32
 Furth
 Fred C., 32
 Jennie A., 32
 Gann
 Mrs., 17
 Galloway
 Lily A., 41
 Gans
 E. V., 32
 Lizzie, 39
 Gantt
 Annie, 41
 Gardner
 brothers, 37
 Henry J., 14
 Garner
 William, 9
 Garrard
 William J., 6
 Gatlin
 Susie, 42
 Gay
 Lula, 41
 Mamie W., 41
 Gershner
 Helen H., 32
 Samuel A., 22
 Geter
 Demcy, 18, 23
 Dewey, 20
 Gilbert
 H. C., 20
 Gilbeth
 H. C., 18, 23
 Gillespie
 Samuel B., 22
 Glascoe
 V. S., 18, 20, 23
 Glasgow
 John, 19
 Glaser
 Ida N., 32
 Jacob, 32
 Glasscoe
 John, 21, 23
 Gogel
 Ethel, 32
 Golding
 Noah, 18
 Goldman
 E. B., 18, 20, 23
 Samuel, 32
 Goldweber
 Aaron, 32
 Clara, 32
 Samuel, 32
 Goolsby
 H. G., 19, 21, 23
 Gottlies
 Babette, 32
 Joe M., 32
 Leah H., 32
 Marx, 32
 Grace
 Hattie L., 32
 Graham
 Leah, 32
 Graves
 William, 19
 Gray
 Jacob R., 11
 Mattie W., 41
 Robert, 9
 Green
 Eleazer G., 11
 J. J., 20, 22
 Greenberg
 Harry, 32
 Greenblatt
 Maier, 32
 Greenway
 James W., 17, 22,
 24
 Grenbling
 M. C., 8
 Grenham
 John, 44
 Griffen
 Daisy, 41
 Griffin
 George W., 37
 J. C., 18, 23
 Mrs., 20
 Griffis
 James W., 4
 Grimmit
 Thomas J., 6
 Grogan
 Martha S., 26
 Hahn
 Duncan, 19, 21, 24
 Halen
 Thomas, 18, 21
 Hall
 Sabra J., 39
 Hamburger
 Henry, 32
 Rose, 32
 Hamilton
 Levi, 10
 Hand
 Duncan, 19
 Hanf
 Dinah, 32
 Edward, 32
 Eliza, 32
 Harry, 32
 Ike E., 32
 Isaac, 32
 Morris, 32
 Roy M., 32
 Ruth L., 32
 Harry
 John E., 24
 Haralson
 Moses A., 11
 Harbert
 Corinne, 41
 De, 42
 Hare
 T. D. Dr., 37
 T. E., 37
 Harlow
 Henry, 18, 23
 Harris
 G. W., 17, 20, 22
 Samuel J., 19, 21,
 24
 William, 18, 23
 William, 20
 Harrold
 Mrs., 17
 Hart
 Carrye B., 32
 Chandler B., 32
 William, 32
 Hawley
 Sarah, 17
 Hays
 Elizabeth, 25
 Laura K., 41
 Hedesth
 Isaac N., 11
 Heller
 Babette S., 32
 Enmma, 32
 Eunice, 34
 Lelia, 34
 Hendrix
 James, 20, 22
 Henley
 James H., 21, 24
 Henny
 Chioe, 40
 Henry
 Hattie L., 41
 James, 12
 John C., 22
 Nathan, 32
 Herman
 R. W., 23
 Herrage
 Robert, 22, 24
 Herzog
 Fulda, 32
 Hester
 Fannie M., 40
 Hezekiah
 Hattie, 39
 Highlander
 W. D., 37
 Hill
 A. N., 17, 20
 C. L., 17, 20, 22
 Georgie F., 40
 William, 12
 William W., 5
 Hilzheim
 Henrietta, 32
 Hinley
 James H., 19
 Hinson
 children, 20
 Mrs., 17
 Hirshorn
 Nathan, 33
 Ruby, 33
 Hogan
 J. B., 18, 21
 Hoggard
 Johnathan, 5
 Holder
 John M., 6

Holloway Y. J., 18, 21	Jackson Spencer, 14 W. N., 18, 20, 23	Samuel, 33	Langston Henry F., 21, 24 Henry T., 19
Holmes Siemen, 13	Jacobs Harry J., 33 Milton, 33 Walter D., 33	Kellogg Benjamin, 15 J., 15	Laster John, 13
Holt Hardy, 14	Jaffe Adelia, 33	Kempner Sarah, 42	Leach Benjamin L., 11
Honnet Cecilia G., 33	James A., 21, 23	Kenedy Thomas J., 7	Leatherwood W. W., 12
Hooper Katie C., 39	Jeffreys George R., 11	Killian Ida M., 41	Leazer LaDonna M., 43
Hoover Emanuel, 33 Pauline, 33 Samuel, 33	Jernigan Frances, 43	Killough J. W., 37	Lee Clarence, 33 Elisha, 19 Elizabeth, 19 J. F., 20, 22 J. H., 17 Mary, 19 R. H., 9 Thomas J., 13 William, 17, 20, 22
Hopkins James H., 10	Johnson James, 10 Jim, 4 Moses, 5 Solomon, 19, 21, 23	Kimbell R. J., 22	Leeson Sarah, 35
Horne L. B., 19, 21, 23	Jones Ephraim Jr., 9 James, 7 James A., 19 John C., 19, 21, 23 John W., 12 N. E., 17 Sue, 39	Kimbrel R. J., 24	Legg W. N., 37
Horton Mollie H., 40	Joyner Fannie, 42	Kimpel Rosealie, 33	Leitner Bettie, 34 Ike R., 34 Julius, 34 Lelia, 34 Roy S., 34
Hudson Henry, 18, 20 Thomas W., 6	Julian J. S., 18, 23	King Joseph, 17, 22 Mattie D., 40 Samuel, 18, 20, 22 Sarah, 31	Lemaster Alice M., 26
Huet John, 18, 20, 23	Julien J. N., 20	Knight Bettie D., 40	Lenox Addie F., 41
Hughes Sallie A., 41	Kahn Andrew G., 33	Koppel Freda, 33	Lesinski Rosa, 34 Saul, 34
Hyatt John W., 7	Kastor Florence M., 33 Leo, 33	Kornfeld Albert, 33 Joseph S., 33 Josephine B., 33 Rosemary, 33	Letrell Ephraim, 18
Hyman Bernhardt, 33 Max G., 33	Katz Ernestine, 33 Nora, 33	Kouple Joseph B., 33	Letson Bettie D., 40 Sallie I., 39
Imbeau Edna I., 45 Franciso M., 45 Jean B., 45 Julian, 45 Paul T., 45 Peter J., 45	Katzenstein Blanche, 33 Samuel, 33	Kraus Mary, 33	Levesque Mr., 37
Inbeau Julian, 45 Matilda, 45	Kaufman Babette, 33 Bertha, 31 David, 33 Joan H., 33 Priscilla, 33	Krum L. W., 37	Levi Carrie B., 34 Charles, 34 Henietta, 34 Henrietta, 34 Raphael, 34
Ionendrakas Jacob, 21, 23		Krumpner Joseph, 33 Julda, 33	
Isaacs Esther, 33 Issac, 33 Maria, 33 Moses, 33		La France Edward G., 33	
Isan Robert M., 13		Ladt Albertine, 33 Clarence, 33 Nathan, 33	
		Lancaster William, 22, 24	
		Lands L. K., 37	

Sam, 34	Little	Babette, 35	James W., 9
Samuel, 34	Lula, 40	Charles, 35	McCauce
Levine	Thomas, 18	Jules, 35	David, 18
Esther, 34	Littrel	Louis, 35	McCowan
Jacob, 34	Ephrim, 21, 23	Sadie D., 35	Hannah, 40
Jay, 34	Lodge	Malone	McCray
Leah, 32	John R., 5	Mr., 37	Kansas D., 40
Morris, 34	Loeb	Mann	McDonald
Samuel M., 34	S., 34	R. G., 18	Samuel J., 10
Susie, 34	Logan	Marcus	McElhed
Levy	Fannie, 39	Isadore, 35	J. F., 18
Abe, 34	Lokey	Jacob J., 35	McGurgin
Eunice, 34	John A., 12	Julia A., 35	Miss, 42
Joseph E., 40	Loper	Louis, 35	McKee
Lewellen	John R., 17	Sarah, 35	C. H., 37
brothers, 37	Loughborough	Martin	McKensy
Cora F., 26	Hope, 42	Demsey P., 21, 24	Lace, 17
J. W., 37	Jentie, 42	Demsey P., 19	McKinley
Lewery	Lovel	Dimey, 22	John, 19, 21, 24
D. B., 19	Lafayette, 14	Duncy, 24	McKinney
Lewine	Lowman	Mollieo, 40	Albert H., 7
Clara, 34	Abram, 18, 20, 23	Thomas, 24	McLemore
Edward, 34	Lowrey	Thomas Q., 22	Daniel, 19
Harry, 34	D. B., 21, 23	Marx	McMurry
Idalia, 34	Lubin	Florence, 35	James W., 5
Janie, 34	Irving, 34	Marion M., 35	McNeal
Lazarus, 34	Lutlow	Mashburn	Barbara, 40
Lillie, 34	Isom, 19	Amanda E., 26	McNeely
Marcia, 34	Lybrand	Massey	James, 18, 20, 23
Minnie, 34	Abram, 22	J. W., 37	McNeil
Moe, 34	John D., 19, 21, 23	May	Annie, 40
Nate, 34	Lyon	Fannie J., 41	McSwain
Rudolph, 34	Myer A., 34	Gerson, 35	D. K., 18, 23
Lewis	Sarah B., 34	Moses G., 35	G. A., 19, 21, 24
A. L., 19, 21, 24	Maas	Mr., 37	Mehlinger
Betty G., 42	Stanley, 34	Regina, 35	David, 35
Burton, 21, 24	Maberry	Mayberry	Meyer, 35
Ida, 41	D. J., 18	Lillian L., 40	Sarah, 35
Joanna, 41	Mahler	Mayer	Simon, 35
M. C., 41	Bertha P., 34	Samuel, 35	Mercer
Perry, 13	George W., 34	McAlister	R. M., 38
Susan, 41	Maier	Willie P., 42	Meuler
Lights	Mae B., 34	McAlmont	Catherine M., 45
N. F., 18, 20, 23	Max, 35	Leon A., 42	Meyer
Linda F., 36	Mailer	McCai	Abe, 35
Lindsay	Babette, 32	John C., 17	Adolph, 35
Samuel, 9	Maim	McCain	Alice, 35
Lippman	B. G., 20, 23	John C., 20	Carrie B., 35
Annie, 29	Mainard	McCance	Emil, 35
Lisiekelee	Diana J., 41	David, 20, 22	Gaba, 35
Julius, 34	Malachowsky	McCarty	Henry, 35

Isaac, 35	May, 26	L. M., 36	Edward W., 36
Joe C., 35	Ruby, 33	Samuel, 36	Pierce
Joseph C., 35	Sarah, 36	Norrell	Joseph, 6
Leopold, 35	More	James B., 14	Pike
May M., 35	Lary, 19	Norris	Geraldine, 45
Nettie A., 35	Morehouse	M. F., 18, 21	Pine
Rosalinda, 35	M. M., 42	Norwood	M., 38
Sarah, 35	Morgan	Charles M., 10	Pinkus
Sol, 35	James L., 43	Nussbaum	Isadore, 36
Virginia, 35	Jane, 17, 20, 22	Jennie, 36	Lena H., 36
Michaelis	Morrow	Samuel, 36	Leon, 36
Jacob, 35	Nathaniel, 19, 21,	Nutt	Pinnol
Sophie, 35	23	James M., 14	E., 38
Milam	Moutch	Oliver	Pirtle
Dudley, 13	Mrs., 17	E. S., 38	Lizzie S., 39
Mille	Munviller	Oppenheimer	Placie
Agnes, 35	Joseph, 9	Claudia, 36	Joseph, 17, 19, 22
Miller	Murdock	Leopold, 36	Pleasants
Emma, 35	Charles P., 22, 24	Owens	Katie, 40
Hibert, 35	Murphy	Emery, 19, 21, 24	Plunket
James, 21, 24	Elizabeth, 17	Palmer	John, 18, 20, 22
Jesse, 19, 21, 24	John W., 20, 22	Mina, 42	Pool
Lorena A., 38	Nance	Parham	William F., 13
Solomon, 35	Richard S., 9	A. G., 42	Pope
William, 35	Nathan	Parker	Eliza H., 40
Minsker	Elise, 36	Brunette, 36	Porter
Abe, 36	Victor, 36	Charles A., 36	James, 19, 21, 23
Hennie J., 36	Navra	Henry, 18, 23	Preisg
Mitchall	Ida, 40	Martha, 17	Edna, 36
James S., 5	Nellums	Parks	Prichard
Mitchell	Elvina V., 21, 24	John, 19, 21, 23	Thomas J., 25
E. J., 17	Nellunes	Parshall	Priddy
F. K., 20, 22	Elvira V., 19	Josh Dr., 26	Thomas, 6
F. R., 17	Newby	Parson	Primrose
Sarah, 17, 20, 22	William, 17, 19, 22	Mrs., 22	William, 8
William, 22, 24	Nichols	Patten	Pritchard
Monk	Charles, 36	Libbie C., 40	Albert L., 26
Franklin G., 19, 21	Rosa, 36	Pearcy	Martin A., 26
Mook	Wolf, 36	C. C., 18, 21	Procter
Bennie, 36	Nicholson	Pegram	W. H., 38
Moore	Jesse, 22, 24	J. F., 20, 23	Purdue
Addie M., 41	Nicks	Pendergrass	Mrs., 20, 23
Amanda W., 36	Matilda F., 41	John J., 7	Raimack
Caruth S., 43	Noble	Mathew W., 5	J. S., 18
Charles F., 12	Mrs., 19	Pennington	Rankin
Dan C. Jr., 12	Nolan	Lula A., 41	Claude, 4
George G., 36	John P., 43	Perin	Raymack
Isaiah J., 36	Nancy, 43	Franklin, 9	J. S., 20, 23
Leah, 36	Nordman	Perry	Rector
Louis P., 36	Albert J., 36	William H., 6	Ernestine, 40
Mary L., 40	Jennie, 36	Pfeffer	Reece

W. C., 8	Morris H., 37	B. F., 18, 20, 23	Eva P., 40
Reed	Rosenau	Joshua S., 12	Fannie A., 42
Susie, 40	Samuel, 37	Simon	Mollie C., 42
Reeves	Rosenbaum	Bertha, 30	Stewart
John, 18, 24	Florance, 35	Simpson	Carrie A., 40
Reid	Rosenthal	J. W., 18, 20, 23	Stinnett
Lula C., 39	Ernestine, 33	Levi, 18, 20, 23	Benjamin, 10
Reinach	Ross	Singleton	Stone
Aaron, 36	Elizabeth, 18, 21,	Thomas, 19, 21, 24	George W., 17, 20
Bennie, 36	23	Skipwith	Stricklin
Carrie, 36	James J., 9	Laura B., 40	Elisha J., 5
Eliza, 36	Roush	Slade	Summer
Julia, 26	Daniel, 43	Malvin, 43	A. J., 17
Lee, 36	Nancy, 43	Slaughter	Tillie, 27
Marcus, 36	Rudkins	Jack W., 14	Summerval
Mose, 36	J. W., 22, 24	Richard I., 5	Robert, 22, 24
Pauline, 36	Russ	Sleurk	Sweeten
Rena, 36	John, 19, 21, 23	Henry, 6	R. F., 12
Samuel, 36	William, 19, 21, 23	Smith	Sykes
Reiner	Samuels	A. J., 17, 19, 22	Bill, 43
Leah, 36	Joseph, 38	Anderson, 21, 23	Loy, 43
Revely	Sanders	Josephine, 22, 24	Talbott
Hugh, 25	James, 18, 20, 23	Lou E., 40	David, 21, 23
Richie	Sauter	Mary E., 40	Taylor
M. D., 19, 21, 23	Amanda L., 42	R. A., 38	Daniel, 18
William, 19	Ellen, 42	Samuel R., 9	David, 18
Riesenberg	Nelle G., 42	Turner, 13	John S., 18, 20, 23
Ben J., 36	Scharff	Smithee	Thomas, 22
Bertha, 36	Clara, 34	Jesse, 17	Thomas G., 18, 21
Fannie, 36	Schloss	Soltz	Terry
Harry, 36	Ethel, 32	Bessie, 27	James, 19, 21, 23
Herman L., 36	Scoggins	Fannie, 30	Thomas
Louis, 36	Albert R., 45	Sommers	Ella, 39
Sol, 36	Ira I., 45	Hanna, 27	Mr., 37
Zelda S., 36	Scott	Sonendraker	Thurman
Ringold	Inez B., 39	Jacob, 19	R. W., 18, 21
Samuel, 19	M. L., 18, 20, 23	Soper	Tiffie
Ritchie	Thomas C., 12	John R., 20, 22	Cattlet C., 10
James F., 10	Scroggins	Sorrells	Tiner
William, 21, 23	Russell E., 45	James, 21, 24	Luke M., 7
Roberds	Scull	Southworth	Tipton
Amanda, 25	Nona T., 39	John S., 19	Randy, 3
Roberson	Seibel	Sparks	Tolbert
M. M., 19, 21, 24	Jacob, 17	Ida E., 39	David, 19
Roberts	Seigler	Spurlin	Townsend
H. H., 38	Nallie M., 45	James F., 8	Cecilia, 41
Rolfe	Shell	St. Clair	J. M., 17, 19, 22
E. A., 38	Abram, 22	Lizzie F., 42	Trepley
J. S., 38	Siebel	Steele	Jason L., 43
Rosen	Jacob, 20	Nettie P., 39	Tribble
Marsha F., 37	Simmons	Stevenson	Newton R., 10

- Trimble
Leonard A., 13
- Tucker
T. H., 18, 21
- Turner
Jeptha, 6
Lula M., 39
Sue C., 39
- Ulmer
Lillian M., 26
- Underwood
Jeptha I., 5
- Usrey
John, 17
- Vandever
J. E., 17, 20, 22
- Vann
John M., 37
- Vaughan
Frank S., 11
Myra C., 42
- Ventres
Augustus, 14
- Vinson
Nancy, 22, 24
- Vogel
Charles, 38
Henrietta, 34
- Wade
B. F., 18, 21
James W., 5
- Walker
James, 19, 21, 23
James R., 22, 24
- Wallace
W. C., 8
- Walton
William, 17, 20
- Wardlow
W. H., 18, 21
- Warlick
J. A., 19, 21, 23
- Warner
Julia M., 39
Myra C., 38
- Waters
George W., 43
- Watkins
Georgie C., 40
Ida, 41
- Watts
Wesley, 18, 20, 23
- Weaver
D. R., 18, 21
Isaiah, 19, 21, 24
Jacob, 22, 24
- Webb
J. L., 21, 23
John L., 18
- Wells
W. A., 18, 23
- West
James, 19
- Whitby
D. E., 38
- White
David A., 7
J. G., 17, 20, 22
James M., 14
John G., 12
Sarah B., 43
- Wiggs
Fannie P., 41
Lucy B., 40
- Williams
brothers, 38
Dora, 42
E., 24
G. W., 18, 20, 23
Jackson, 14
John B., 11
Mary, 40
Mary A., 43
N. C., 19
Sallie, 41
Thomas J., 10, 14
W. C., 21, 23
William, 17, 20, 22
- Williamson
Bland, 10
- Williamston
William, 8
- Wills
W. A., 20
- Wilson
Elias, 19, 21, 24
Thomas J., 19, 21,
24
William D., 19, 21,
23
- Winchester
A. B., 19, 21, 23
- Windham
William, 22, 24
- Wingard
Daniel L., 20, 23
Daniel T., 18
- Wisdom
Clara C., 40
- Wittenberg
Annie, 40
- Mollie, 39
- Woodard
Willie W., 17, 20,
22
- Woodel
William, 18
- Woodell
William, 20, 23
- Woodruff
C. C., 42
M. Janie, 39
Willie, 42
- Wooley
William T., 18, 20,
23
- Wordell
Delilah, 24
- Wrems
James, 20
- Wrenn
James, 18, 23
- Wright
Dickie G., 42
Lewis, 18, 20, 23
Nannie, 39
Sallie L., 40
- Yandle
William, 13
- Yarbrough
Henderson, 19, 21,
24
- Zoeller
Christian E., 16

THE ARKANSAS GENEALOGICAL SOCIETY

A member of the National Genealogical Society, the Federation of Genealogical Societies, and the Friends of the Arkansas State Archives

The Arkansas Genealogical Society, formed in 1962, is incorporated as a non-profit organization. The purpose of this society is to promote genealogy, to educate its members and others in genealogical

research, to publish articles pertaining to Arkansas ancestors, and to locate and preserve genealogical, historical, and biographical information and records.

Disclaimer

Neither the Arkansas Genealogical Society (AGS), its individual members, nor its editors assume any responsibility for statements, whether of fact or opinion, made by contributors to this publication.

Membership

Any person interested in genealogy is encouraged to become a member by payment of \$25.00 dues in advance for one year. This includes a year's subscription to the society's periodical. Make your check or money order payable to AGS, PO Box 26374, Little Rock, AR 72221-6374.

Back Issues

Many back issues of *The Arkansas Family Historian* are available on the AGS web site, www.agsgenealogy.org. Hard copies of selected recent back issues may be purchased for \$5.00 each while supplies last. Mail your request to AGS, PO Box 26374, Little Rock, AR 72221-6374.

Research Policy

The society regrets that we are unable to provide research for members. We do suggest that anyone wanting fee-based research to refer to the Association of Professional Genealogists website for a list of researchers at www.apgen.org.

Book Reviews

Authors and publishers may submit books for review in *The Arkansas Family Historian*. Send review copies to AGS, PO Box 26374, Little Rock, AR 72221-6374. All materials become the property of AGS to be distributed to repositories as the society deems appropriate or the submitter requests.

Queries

Members may submit queries related to Arkansas ancestors to be published in *The Arkansas Family Historian*. Send queries by e-mail to Publications@agsgenealogy.org or mail them to AGS Queries, PO Box 26374, Little Rock, AR 72221-6374. Be sure to include your name, address, e-mail address, and phone number.

Submissions

Please submit articles, abstracts, transcripts, indexes, Bible records, and other material to be considered for publication. Photographs and materials will not be returned. Sources should be cited as footnotes. Materials may be submitted by e-mail to Publications@agsgenealogy.org or on paper or electronic media to AGS, PO Box 26374, Little Rock, AR 72221-6374. The right to edit all material submitted is reserved. The submitter should include name, address, phone number, and e-mail address with the material. Proof copies may be sent prior to printing if requested.

Contributions

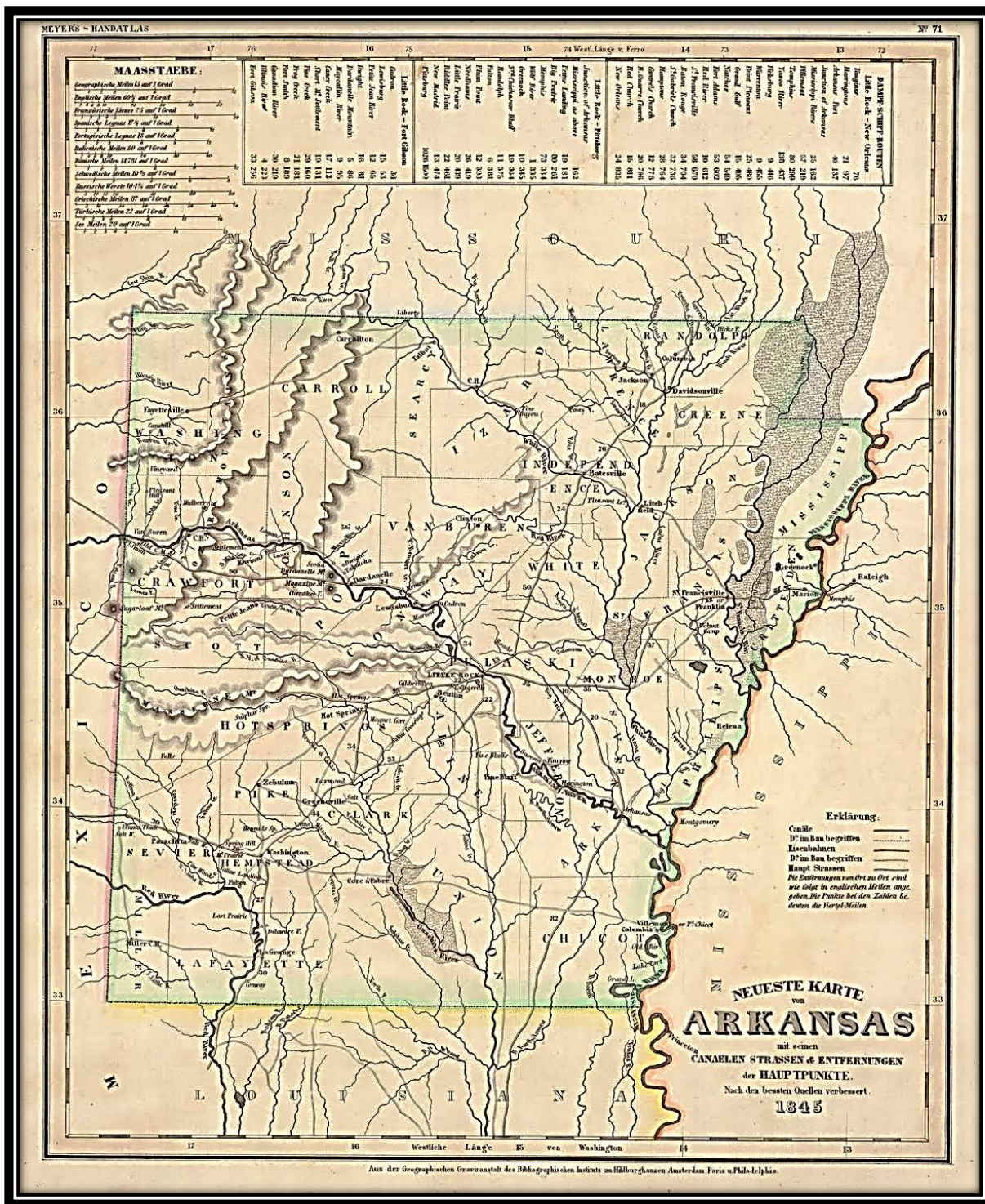
AGS qualifies as a tax-exempt organization as stated in Section 501(c) (3) of the Internal Revenue Code of 1986. Any donations of books, funds and other property to the society are tax deductible.

Change of Address

Please notify AGS with your change of address or a mistake in address as soon as possible. Contact us by e-mail at Membership@agsgenealogy.org or AGS, PO Box 26374, Little Rock, AR 72221-6374.



MAP OF ARKANSAS, 1845



From: 4.bp.blogspot.com/_wpahZzGZjM/TUwo7sSzamI/AAAAAAAAA3A/7_BpMlpmPo/s1600/old_arkansas_map1.jpg

Arkansas Genealogical Society
P.O. Box 26374
Little Rock, AR 72221-6374

Address Service Requested

Non-Profit
Organization
U.S. Postage
PAID
Little Rock, AR
Permit No. 30

ISSN 0571-0472