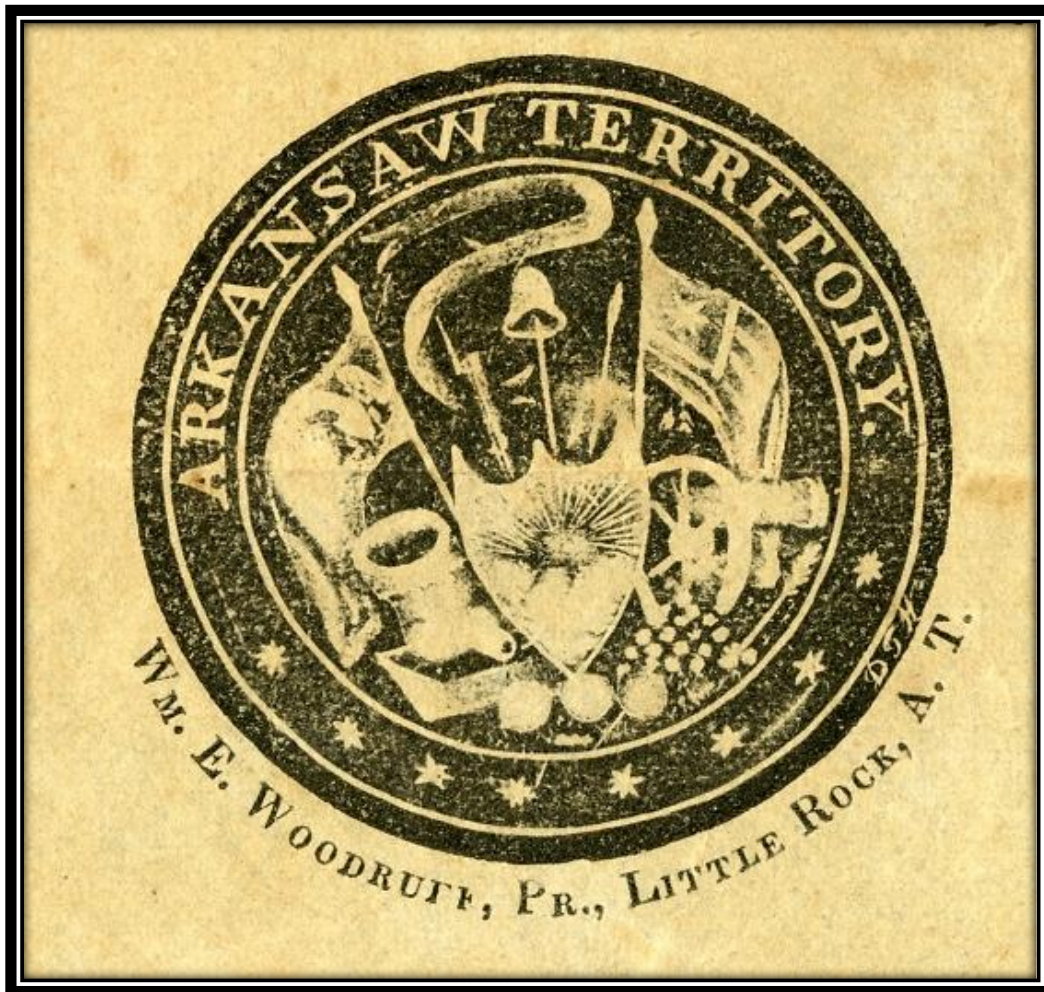


*THE
ARKANSAS FAMILY
HISTORIAN*



VOLUME 57, NUMBER 3

Summer 2019

Arkansas Genealogical Society

P.O. Box 26374

Little Rock, AR 72221-6374

Since 1962

Publications: Publications@agsgenealogy.org
Membership: Membership@agsgenealogy.org
AGS E-Zine: Ezine@agsgenealogy.org
Questions: AskAGS@agsgenealogy.org
Website: www.agsgenealogy.org

Officers and Board Members

President	George Mitchell	Pine Bluff
1 st Vice-president	Thea Walden Baker	Rose Bud
2 nd Vice-president	Russell P. Baker	Mabelvale
Secretary	Ginney Pumphrey	Little Rock
Treasurer	Whitney McLaughlin	Little Rock
Historian	Ann Early	Fayetteville
	Linda Fischer	Stuttgart
	Richard Butler	Little Rock
	Jeanne Rollberg	Little Rock
	Brandon Ryan	Conway
	Glenn Mosenthinn	Searcy
	Chris Stewart	Little Rock
	Rita Benafield Henard	Little Rock
	Sherryl Guthrie Miller	Lonoke
	Johnny Mann	Texarkana
	Jane Wilkerson	Little Rock
	Mary Evans	Little Rock
	Melissa Nesbitt	Texarkana
	Barbara J. Cart	Jonesboro

Editorial Staff

Russell P. Baker, Editor
Thea Walden Baker, Assistant Editor
Glenn Mosenthinn, Assistant Editor
Ann Early, Assistant Editor
Rita Benafield Henard, Assistant Editor

On the Cover: Copy of an unofficial seal of Arkansas Territory c. 1832 from the L. C. Gulley Collection in the files of the Arkansas State Archives in Little Rock. The Arkansas Territory was formed in 1819 from the southern part of Missouri Territory. In 1836 Arkansas became a separate state.

ARKANSAS FAMILY HISTORIAN
Published quarterly since 1962

Volume 57 Number 2 Summer 2019

TABLE OF CONTENTS

FROM THE AGS PRESIDENT	2
FROM YOUR EDITOR	3
PUPILS OF THE ARKANSAS INSTITUTE FOR THE BLIND, 1860-1870 <i>Russell P. Baker</i>	4
CRAIGHEAD COUNTY, ARKANSAS, INDIGENT FAMILY LIST, 1864 <i>Russell P. Baker</i>	9
CHARTER MEMBERS OF THE ARKADELPHIA, ARKANSAS, FIRST BAPTIST CHURCH, 1851	13
FRANKLIN COUNTY, ARKANSAS, HOME GUARD UNITS, 1861	14
AN 1872 SALINE COUNTY, ARKANSAS, HOMICIDE	16
PARAGOULD, GREENE COUNTY, ARKANSAS, 1884	16
FAMILY BIBLE RECORDS OF REV. WILLIAM H. PASLAY	18
DNA AND THE ANCESTORS OF ROBERT SPILSBY COLEMAN, REVEILLE, LOGAN COUNTY, ARKANSAS <i>Bill Hanks</i>	19
ONE FAMILY'S JOURNEY FROM SOUTH CAROLINA TO ARKANSAS, 1874	22
SOME PIKE COUNTY, ARKANSAS, VOTERS, 1901	24
CALHOUN COUNTY, ARKANSAS, DEALS WITH THE RESULTS OF WAR, 1862 <i>William T. Carter</i>	25
PULASKI COUNTY, ARKANSAS TERRITORY, DELINQUENT TAXPAYERS, 1821	27
MUSTER ROLL OF THE COLUMBIA COUNTY GUARDS, 1861	29
CAPTAIN JESSE BEAN'S COMPANY, U. S. MOUNTED RANGERS, 1832 <i>Russell P. Baker</i>	30

© Copyright 2019. Arkansas Genealogical Society (AGS), Little Rock, Arkansas (ISSN 0571-0472). The Arkansas Family Historian is sent quarterly to all members of the society and to libraries by subscription. Periodicals postage is paid at Little Rock, Arkansas.

TOWNSHIP ELECTION SUPERVISORS FOR SOME ARKANSAS COUNTIES, 1872	36
ARKANSAS GENEALOGICAL QUERIES	41
ARKANSAS ANCESTRY CERTIFICATES	41
BOOKS AND PUBLICATION REVIEWS	42
<i>Map of Arkansas Territory, Circa 1820s</i>	<i>(inside back cover)</i>

FROM THE AGS PRESIDENT



Greetings from the Board of Directors of the Arkansas Genealogical Society and welcome to the Summer 2019 edition of the *Arkansas Family Historian*. We hope you enjoy the articles that are included and learn something about your family along the way. By the time you receive this, our annual Spring workshop that AGS co-sponsors with the Arkansas State Archives will be history. If you have not been able to take advantage of these free workshops, they are always informative. They are usually held in May, at the Southwest Arkansas Regional Archives in Washington, Arkansas. I hope that you will note it on your calendar for next year. The exact date will be announced as the time grows nearer.

The other item that is always high on our list of projects is the Arkansas Genealogical Society's Annual Fall Conference. This year's edition will be held at the Benton Event Center in Benton, Arkansas, on Friday and Saturday, October 18-19, 2019. Our featured speaker is Judy Russell. Judy is well-known as the "Legal Genealogist". She holds a bachelor's degree in journalism with a political science minor from George Washington University in Washington, D.C. and a law degree from Rutgers School of Law-Newark. Judy has worked as a newspaper reporter, trade association writer, legal investigator, defense attorney, federal prosecutor, and law journal editor. For more than twenty years before her retirement in 2014, she was an adjunct member of the faculty at Rutgers Law School. She is a Certified Genealogist and Certified Genealogical Lecturer, and a member of the National Genealogical Society and the Association of Professional Genealogists. She is also a member of state genealogical societies in New Jersey, North Carolina, Virginia, Texas and Illinois. We hope that you will make plans to attend this year's conference. Judy is a wonderful speaker and teacher. Check our website at www.agsgenealogy.org for conference information and a registration form. You can also check our website for membership information, available publications, a place to register for our free monthly e-zine, and much more.

As always, if you are reading this issue, I am assuming that you are a member of the Arkansas Genealogical Society and we thank you for your membership. If you are not an AGS member and somebody passed this publication on to you, please consider becoming a member and begin receiving your own copy of the *AFH* four times a year. In addition, as an AGS member you will receive valuable information and notices about upcoming seminars, workshops, and other events. On behalf of the entire AGS Board, I want to wish each of you a wonderful and safe summer and continued success in your genealogical research. Please do not hesitate to contact us if you have questions, suggestions, or information that you would like to share with our readers.

George Mitchell, President
Arkansas Genealogical Society

FROM YOUR EDITOR



I would also like to welcome our readers to the pages of the Summer 2019 *Arkansas Family Historian*. Since 1962, it has been Arkansas' only state-wide genealogical publication. In each issue, we endeavor to bring our readers information from across our state that covers subjects ranging from territorial days to the early years of the twentieth century. In this issue you will find articles relating to Franklin, Greene, Logan, Saline, Pike, Calhoun, Pulaski, Columbia, and Craighead counties. Some of the subjects covered are blind school pupils, military service records, early travel into Arkansas, and at least one murder. It is our hope that this information will not only assist you with your Arkansas genealogical research but will also enhance your understanding of the history of our state.

Over the years, one of the most vital elements in the success of this publication has been the contributions of our readers. If you have an article relating to your Arkansas family roots, your local community, or your local church or cemetery, sent it along to us for evaluation. Our email address is listed below. Share your information with a wider audience through our pages. We also welcome your questions, your comments, and your criticisms.

Your Early Family Photographs

If you have an interesting photograph of a member or members of your Arkansas family, consider sharing it with our readers. You might see it appear on the first page of a future edition of the *Arkansas Family Historian*. Scan it and send it as an attachment to the email address listed below. The pictures should be sharp and clear, with good contrast for publishing. Be sure to identify the subject(s) of the picture, as well as the approximate date and place where it was taken. We look forward to receiving your photographs.

A Detailed History of Arkansas Now Online

Now at last, the full searchable text of a three volumes extensive history of Arkansas by Dallas T. Herndon, entitled *Centennial History of Arkansas* is available on line at <https://catalog.hathitrust.org/Record/00888491Full>. Enter "Centennial History of Arkansas" in the search box. It is free from the Hathi Trust Digital Library. Researchers will find it a convenient source of information on the early settlement of our state, the formation of its counties, the development of its transportation system, its political history, and the events surround the Civil War and Reconstruction in Arkansas. Volumes two and three contain biographies and photographs of many prominent Arkansans.

North Little Rock's Thomas Cemetery

The Thomas Cemetery Association, 13 Oak Tree Circle, North Little Rock, Arkansas 72116-7005 recently began an effort to clean up and rehabilitate this until recently forgotten cemetery now located in North Little Rock. When the cemetery was formed it was in a rural area. Within its boundaries are buried many early settlers, as well as at least one veteran of the Civil War. Recent storms caused a considerable amount of damage to the site. A massive clean-up is in the works.

For many years the cemetery, begun as a family burial ground, was almost complete abandoned. Recently, due to the efforts of interested citizens, a new Thomas Cemetery Association has been formed to care for the area. Gates have been installed at the cemetery entrances to control traffic. Among the new plans for the old cemetery are fencing, mapping of graves, stone restoration, etc. Membership in the association is \$10.00 for a regular membership and \$25.00 for a sustaining membership. If you have family buried in this cemetery or wish to help in its protection and restoration, contact the association at the address above. Your editor would urge other local groups to help with the preservation and restoration of the many hundreds of abandoned cemeteries that dot Arkansas's country-side.

Arkansas Family Bible Records

In the pages of this issue you will find the interesting and informative family Bible records of Rev. William H. Paslay of Forrest City, Arkansas. Since our state did not begin keeping birth or death records before 1914, family Bible records are an essential source of family history information. If you have such a record for a family with Arkansas connections, please consider sending us a transcript for possible publication in a future issue of the *Arkansas Family Historian*. We would prefer that the records relate to births and deaths that date from before 1950. We would love to feature one such record in each of our future issues. Our email address is listed below.

Russell P. Baker, Editor
gobgob3@mindspring.com

**PUPILS OF THE ARKANSAS INSTITUTE FOR THE BLIND,
1860-1870**

by Russell P. Baker

The predecessor of the Arkansas School (Institute) for the Blind was opened early in 1859 by a “blind Baptist preacher” named Rev. J. L. Hauck/Houck, in Arkadelphia, Clark County, Arkansas.¹ In the summer of 1860, Otis Patten, an educator who also suffered from “defective sight,” became its superintendent.² The school closed in 1863 during the Civil War. However, it was reorganized and moved to Little Rock, Arkansas, in 1868.³ Today it is located on West Markham Street in Little Rock.

Patten was born in Topsham, Maine, on May 11, 1821, the son of Actor (Hector) Patten. He married Susan McMillen on December 27, 1849, in Franklin County, Ohio.⁴ By the next year, he was a teacher in the Kentucky School for the Blind in Louisville.⁵

He remained the head of the Arkansas School for the Blind until he was forced to resign in 1885. He died in Albuquerque, New Mexico, while on a visit to one of his daughters. He is buried in Little Rock’s Oakland Cemetery.⁶ He was the father of five children, Anna B., Madeline M., William M., Elizabeth, and Susannah.⁷ Patten was an active member of the Presbyterian Church and worked to promote early Sunday Schools across Arkansas. There is a small collection of his papers in the holdings of the Arkansas State Archives in Little Rock.

1860

A. From the *Report of the Trustees and Superintendent of the Arkansas Institute for the Blind, Arkadelphia, Clark County, Arkansas* (1860), p. 20.⁸

¹ Records of the Arkadelphia, Arkansas, First Baptist Church, Roll MG08041 AHC in the collections of the Arkansas State Archives. Most records refer to him simply as “Rev. Hauck.”

² *Report of the Arkansas School of the Blind, 1880-1882* (1882), pp. 9-10.

³ For a short history of this of this institution, see Dallas T. Herndon, *Centennial History of Arkansas* (1922), pp. 431-432.

⁴ Ancestry.com. *Ohio, County Marriage Records, 1774-1993* (2016).

⁵ 1850 U.S. Census, Louisville, District 2, Jefferson County, Kentucky, pp. 169B-170A.

⁶ Little Rock, Arkansas, *Arkansas Daily Gazette*, April 15, 1893, p. 2, col. 4-5.

⁷ www.ancestry.com/family-tree/person/tree/15671202/person/18779269287/facts?_phsrc=QmO6039&_phstart=successSource.

⁸ Otis Patten Collection, MS 328, Arkansas State Archives.

CATALOGUE OF PUPILS

NAMES	RESIDENCE	DATE OF ADMISSION	CAUSE OF BLINDNESS
Ellen Coyne	Fort Smith	February 1859	Smallpox
Sarah E. Shockley	Fort Smith	February 1859	Smallpox
William L. Patterson	Washita (Ouachita) County	February 1859	Inflammation
Ann Augusta Cole	Dallas County	February 1859	Fever
Robert G. Ward	Yell County	January 17, 1860	Erysipelas
Andrew J. Mitchell	Pike County	March 12, 1860	
Rebecca J. Mitchell	Pike County	April 20, 1860	
Robert W. Bruce	Union County	July 23, 1860	Congenital
Amanda E. Hill	Johnson County	September 3, 1860	Inflammation
John Freeman	Montgomery County	September 3, 1860	Congenital

B. 1860 U. S. Census, Caddo Township, Arkadelphia, Clark County, Arkansas, p. 75B, "The Blind Institute."

Name	Age	Gender	Birth Place	Disability	Comments
Otis Pattent (sic)	39	M	Maine		Superintendent
Susan Pattent	32	F	Ohio		
Isebullia (?) Pattent	21	F	England		
Annah Pattent	9	F	Kentucky		
Madline Pattent	6	F	Kentucky		
William Pattent	14 (sic)	M	Indiana	Blind	
Ellen Cain	38	F	unknown	Blind	
William Patterson	25	M	unknown	Blind	
Andrew Mitchell	17	M	unknown	Blind	
Robert Ward	18	M	Alabama	Blind	
Augusta Cole	22	F	Alabama	Blind	
Lizza Shockly	13	F	unknown	Blind	

Rebecca Mitchell	11	F	unknown	Blind	
R. W. Bruce	?	M	unknown	Blind	

1870

A. From the *Fifth Biennial Report [1869-1870] of the Trustees and Superintendent of the Arkansas Institute for the Education of the Blind* (1871), p. 44.⁹

Names	Age	Residence	Cause of Blindness	Comments
Louis White	9	Little Rock	Congenital	
James M. Cloud	20	Hot Spring County	Fever	
William H. Griffin	23	Hot Spring County	Congenital	Discharged
John F. Tyler	9	Arkadelphia	Congenital	
Frank M. Locke	11	Little Rock	Sore eyes	
John W. Bellah	21	Richmond	Amaurosis	Died
Charles B. Pruett	19	Franklin County	Fever	Discharged
Reese Turner	16	Polk County	Cataract	
Harvey B. Howell	62	Crawford County	Sore eyes	Discharged
Edward W. Moore	29	Camden	Measles	Discharged
Henry S. Smith	24	Scott County	Unknown	
Michael Dodd	15	Rockport	Sore eyes	
Levator Lamb	15	Pulaski County	Fever	
Leander Newton	18	Jefferson County	Inflammation	
Anthony Franklin	18	Yell County	Unknown	
Jonas Wheeler	26	Pulaski County	Accident	
Wise Virginia	8	Helena	Unknown	
William Manning	8	Crawford County	Burn	
James J. McCullough	15	Saline County	Sore eyes	
Alice E. Damm	15	Benton County	Congenital	
Mary Jane Mathews	18	Van Buren	Scrofula	
Lucinda E. Bennett	10	Saline County	Accident	
Martha McLaughlin	12	Ozark	Brain fever	
Martha Williams	28	Crawford County	Sore eyes	Discharged
Jane Hicks	19	Fort Smith	Sore eyes	
Louisa J. Brooks	18	Hot Springs	Sore eyes	
Josephine Manly	20	Pulaski County	Unknown	

⁹ *ibid.*

Lavisa Elliott	16	Dallas County	Scarlet fever	
Francina Riffe	15	Ouachita County	Sore eyes	
Rebecca Mitchell	21	Pike County	Unknown	
Georgiana Brooks	12	Hot Springs County	Congenital	
Lorena E. Miller	13	Yell County	Sore eyes	
Carolina Rhodes	27	Yell County	Measles	
Agnes Sinclair	19	Johnson County	Sore eyes	
Louisa Burnett	17	Johnson County	Sore eyes	
Sophonria Bright	25	Grant County	Congenital	
Mary Kirby	19	Johnson County	Sore eyes	Discharged
Martha Evans	15	Clark County	Congenital	Discharged
Julia Manly	11	Pulaski County	Sore eyes	
Lula Bell	10	Pulaski County	Sore eyes	
Millie E. Rowland	8	Yell County	Smallpox	
Nancy Ellis	19	Desha County	Unknown	
Jenny F. Ezell	11	Pulaski County	Scrofula	
Amanda Moore	25	Pulaski County	Sore eyes	
E. McElhany	40	Pulaski County	Unknown	Discharged
Mary Jones	26	Jefferson County	Fever	Discharged
Mary Cypert	14	Pulaski County	Neuralgia	
Laura Alsop	10	Crawford County	Fever	

B. 1870 U. S. Census, Big Rock Township, Pulaski County, Arkansas, pp. 68A-B, "Blind Institute."

Name	Age	Gender	Race	Occupation	Place of Birth	Disability
Otis Patton	49	M	white	Superintendent Blind Institute	Maine	
Susan M. Patton	42	F	white	Matron	Ohio	
Anna B. Patton	19	F	white	Teacher	Kentucky	
Madeline H. Patton	17	F	white		Kentucky	
William M. Patton	14	M	white		Indiana	
Elizabeth C. Patton	8	F	white		Arkansas	
Susan C. Patton	6	F	white		Indiana	
Barkman, Jack	40	M	black	Laborer	South Carolina	
Barkman, Vince	16	M	black	Works in office	Arkansas	

Barkman, Harley	14	M	black	Works on farm	Arkansas	
Barkman, Vick	8	F	black		Arkansas	
Barkman, Bessie	6	F	black		Arkansas	
Barkman, Daniel	5	M	black		Arkansas	
Hill, Fannie	23	F	black	Servant	Virginia	
Bush Virginia	11	M	black	Errand boy	Arkansas	
Butler, Mary	32	F	white	Seamstress	Tennessee	
Butler, Columbus	5	M	white		Arkansas	
Butler, Lily	1	F	white		Arkansas	
Klosh, Paul B.	22	M	white	Music teacher	Prussia	Blind
Skillenger, William S.	22	M	white	Mechanical teacher	New York	Blind
McMillan, Mary H.	23	F	white	Teacher	Ohio	Blind
Green, Anna C.	23	F	white	Teacher	Indiana	Blind
White, Louis	M	9	white	Student	Arkansas	Blind
Hicks, Jane	F	18	Indian	Student	Cherokee Nation	Blind
Brooks, Louisa J.	F	17	white	Student	Arkansas	Blind
Tyler, John F.	9	M	white	Student	Arkansas	Blind
Manly, Sarah M.	20	F	white	Student	Alabama	Blind
Locke, Francis M.	10	M	white	Student	Arkansas	Blind
Riffe, Francis	15	F	white	Student	Arkansas	Blind
Billah, John W.	21	M	white	Student	Tennessee	Blind
Brooks, Georgianna	12	F	white	Student	Arkansas	Blind
Miller, Lorena E.	13	F	white	Student	Arkansas	Blind
Rhodes, Sarah F.	27	F	white	Student	Arkansas	Blind

Burnell, Louisa J.	17	F	white	Student	Arkansas	Blind
Bright, Sophrona	15	F	white	Student	Alabama	Blind
Pruett, Charles B.	19	M	white	Student	Arkansas	Blind
Kirby, Mary E.	19	M	white	Student	Arkansas	Blind
Turner, Reese	16	M	white	Student	Texas	Blind
Manley, Julia A.	11	F	white	Student	Arkansas	Blind
Moore, Edward W.	24	M	white	Student	Alabama	Blind
Smith, Henry S.	24	M	white	Student	Mississippi	Blind
Dodd, Michael	15	M	white	Student	Arkansas	Blind
Rowland, Millie E.	8	F	white	Student	Arkansas	Blind
Ellis, Nancy J.	18	F	white	Student	Illinois	Blind
Lamb, Lavender	15	M	black	Student	Arkansas	Blind
Cypert, Mary E.	14	F	white	Student	Arkansas	Blind
Allsop, Laura J.	10	F	white	Student	Arkansas	Blind
Franklin, Anthony	18	M	black	Student	Arkansas	Blind
Wheeler, Josiah	26	M	black	Student	Georgia	Blind
Wise, Virginia	7	F	black	Student	Arkansas	Blind
Cypert, Prudence	8	F	white	Student	Arkansas	Blind

CRAIGHEAD COUNTY, ARKANSAS, INDIGENT FAMILY LIST, 1864

by Russell P. Baker

Craighead County in northeastern Arkansas was formed in 1859 from parts of Mississippi, Greene, and Poinsett counties. The following list of indigent families of Confederate soldiers living in this county was compiled on October 26, 1864. It was recently located in the Arkansas State Archives' Small Manuscript Collection, Box 62, Folder 17, Roll MG00234.

Finding this kind of record for this late a date during the Civil War period is very unusual for our state. What is even more unusual is that the Craighead County courthouse at Jonesboro burned about 1878, destroying most if not all county records. A single tax book for 1860 has survived and is in the microfilm collections of the Arkansas State Archives, MFILM County, Roll 001030.

At the beginning of the Civil War, county courts in each Arkansas county were authorized to provide payments from public funds for the maintenance of poor and indigent families of Confederate servicemen from the county. This Craighead County list was prepared on three large sheets of paper, each of which is very difficult to read. A special thanks to the staff of the Arkansas State Archives for their assistance in providing a readable copy of the original document. However, many of the names, ages, relationships, etc. are still very difficult to read.

The records transcribed below give the names of seventy soldiers, the county from which they enlisted, units in which they served, whether “in service” or dead, as well as the names of their spouses or parents, and other dependents, their ages, and their relationship to the soldier if given. These names have been compared to the 1860 U. S. Census for Craighead County and the names of the township of residence have been added if located.

Civil War era townships in Craighead County:

- Big Creek Township (located in the northeast corner of the county),
- Buffalo Township (annexed from Mississippi County in 1863, located in the northeastern corner of the county),
- Jonesboro Township (located in the center of the county),
- Maumelle Township (located in the Bay area),
- Powell Township (located in north east part of the county),
- Texas Township (in the western part of the county).¹

1. <i>Jesse A. Curtner</i> , Craighead Co., 13 Arks Reg., in service, Elizabeth Curtner, 43, mother, Stephen 14, Louisa 12, Wils 8, Jacob 4, Martha 1.
2. <i>Jasper N. Altmon</i> , Craighead Co., 13 Arks. Reg., dead, Jane Altmon, 35, wife, James 1. [Powell Township]
3. <i>William Ganaway</i> , Craighead Co., Col. Lyles Reg., dead, Sarah Ganaway, 35, wife, Sarah 4, Emline 6.
4. <i>John Young</i> , Craighead Co., 23 Ark. Regt., dead, Martha Young, 40, wife.
5. <i>C. H. Neely</i> , Craighead Co., 23 rd Ark. Regt., dead, S. J. Neely, 36, wife.
6. <i>John W. Ripley</i> , Lawrence Co., Forrest Com’d, dead, Josephine Ripley, 32, wife, Thomas H., 13, Louisa, 7.
7. <i>Thomas Slaughter</i> , Craighead Co., Col. Harts Regt., in service, Martha Slaughter, 30, wife, James 7, John 2.
8. <i>James Vick</i> , Craighead Co., 13 th Arks. Regt., dead, Adaline Vick, 37, wife, John 8, James 6.
9. <i>Samuel Hanah</i> (sic), Craighead Co., Col. Harts Regt., in service, Mary, 40, wife, Samuel 8, Lewis 6, Martha 2. [Jonesboro Township]
10. <i>Lewis Williams</i> , Craighead Co., 13 Arks. Regt., dead, Sarah, 50, wife. [Jonesboro Township]
11. <i>James Hargrove</i> , Craighead Co., 23 Arks Regt., in service, Susan, 40, mother.

¹ For additional information see Russell P. Baker, *Arkansas Township Atlas 1819-1930, Revised and Improves Maps* (2006), pp. 40-41.

12. <i>Phillip H. Howel</i> , Craighead Co., 23 Arks Regt., in service, Francis, 23, wife, James H. 5, Mary E. 3.
13. <i>William and Frank Bolien</i> (?), Craighead Co., 13 th Arks Regt., in service, Elizabeth, 45, mother, sister, Isabella 13.
14. <i>Oliver Rice</i> , Craighead Co., 13 Arks Regt., in service, Mary, 55, mother.
15. <i>John Wadkins</i> , Craighead Co., Col. Harts Regt., dead, Amanda S., 21, wife, Malvina 6 and James 4.
16. <i>James A. Guess</i> , Craighead Co., 13 Arks Regt., in service, Rebecca, 30, wife, William 7, David 5, James 3. [Powell Township]
17. <i>Jesse and David Blake Jr.</i> , Craighead Co., 13 Arks. Regt., David dead, Jesse in service, Sarah, 62 mother. [Texas Township]
18. <i>John W. Tilston</i> , Craighead Co., 13 Arks. Regt., dead, Eliza, 42, wife, Mary 18, Matthew 15, Sarah 12, Benjamin 6, Alice.
19. <i>Isaac Mangrum</i> , Craighead Co., McCroys Regt., in service, Tiletha, 26, wife, Frances 7 and James 5.
20. <i>A. F. Mangrum</i> , Craighead Co., McCroys Regt., in service, Susan, 25, wife, John E. 7, Cezar 4, Jacob 1.
21. <i>Edward Mangrum</i> , Col. Harts Regt., dead, Zedick, 30, wife, Morzane (?) 6, Wiley 4.
22. <i>John Gibson</i> , Craighead Co., Col Harts Regt., dead, Mary, 23, wife, James 3. [Powell Township]
23. <i>William Howel</i> , Craighead Co., 13 Arks Regt., dead, Catherine, 32, wife, William 6, Mary 4, Elizabeth. [Jonesboro Township]
24. <i>M. N. Albright</i> , Craighead Co., Co. Hart's Regt., in service, Mary, 32, wife, Nancy 3, James 2.
25. <i>W. H. Benton</i> , Jackson Co., Co. Harts Regt., in service, Sarah E., 30, wife, M. B. 5.
26. <i>Jesse C. Broadaway</i> , Craighead Co., Col. Harts Regt., in service, Mary J., 25, William R. 8, Marcus 7, Winfield 5, Columbus 2. [Jonesboro Township]
27. <i>William H. Boardaway</i> , Craighead Co., Col. Harts Regt., in service, Sarah J., 26, wife, William 13, Job 11, Martha 7, James 3, Sarah 1. [Jonesboro Township]
28. <i>Samuel Barker</i> , Craighead Co., Col. Harts Regt., in service, Martha 25, wife. [Powell Township]
29. <i>William P. Watt</i> , Craighead Co., Col. Lyles Regt., in service, Martha J., 28, wife, Columbus 4 and J. F. 3.
30. <i>George W. Broadaway</i> , Craighead Co., Col. Harts Regt., children, John C. 5, Andrew 7. [Jonesboro Township]
31. <i>Charles Farmer</i> , Craighead Co., McGee Batt., dead, Elizabeth, 23, wife, Mary 8.
32. <i>Jordan Bagwell</i> , Craighead Co., McGee Batt., dead, Adaline, 38, wife, Mary 12, Maling (?) 6. [Maumelle Township]
33. <i>Willis McCracken</i> , Craighead Co., Col. Harts Regt., dead, Jane, 36, wife, George 7, Elizabeth 5. [Powell Township]
34. <i>Benjamin F. Davise</i> , Craighead Co., 13 Arks Regt., in service, Lateria, 25, wife, Caroline 6, William 3.

35. <i>James A. Gregston</i> , Craighead Co., Col. Lyle Regt., in service, Rachael, 66, mother. [Powell Township]
36. <i>Samuel J. Shasteen [Chastian]</i> , Craighead Co., Col. Harts Regt., dead, Jane, 44, wife, Samuel 15, Washington 12, Luran 4. [Powell Township]
37. <i>Jackson P. Stewart (?)</i> . Craighead Co., 13 Arks. Regt., dead, Mary, 23, wife, Martha 3. [Powell Township]
38. <i>William T. Fowler</i> , Craighead Co., Col. Harts Regt., dead, Jane, 71, mother. [Powell Township]
39. <i>Samuel T. Whitehead</i> , Craighead Co., Col. Lyles Regt., dead, Mahalia, 48, wife, Robert 10.
40. <i>Johnathan Davis</i> , Craighead Co., 13 Arks Regt., in service, Frances, 22, wife, George W. 1. [Powell Township]
41. <i>Thomas C. Gibson</i> , Craighead Co., Col. Lyles Regt., in service, Nancy, 58, mother, Jane 23, Amanda 18. [Powell Township]
42. <i>James Davis</i> , Craighead Co., 13 Arks Regt., dead, Mouming (?), 44, mother, Caroline 16.
43. <i>Asbery Gibson (?)</i> , Craighead Co., Col. Lyles Regt., dead, Amanda, 35, wife, William 7, John 5, Jane 2. [Powell Township]
44. <i>Andy Gailey</i> , Craighead Co., Churchhill Regt., in service, Nancy, 45, mother, one sister named Nancy 15. [Big Creek Township]
45. <i>Flavius J. Davis</i> , Craighead Co., Col. Lyles Regt., in service, Emely W., 21, wife, Thomas M. 1.
46. <i>Isaac Thomas</i> , Craighead Co., Col. Harts Regt., dead, Malinda, 30, wife, George 4, Aaron 2. [Jonesboro Township]
47. <i>Joseph Pain</i> , Craighead Co., Col. Lyles Regt., in service, Elizabeth, 62, mother, Mary 26, Elizabeth 20.
48. <i>Daniel H. Altmon</i> , Craighead Co., Col. Harts Regt., dead, Amy, 30, wife, Daniel 6, Isiak 4, Jesse 2. [Powell Township ?]
49. <i>Green Wood (?)</i> , Craighead Co., Col. Lyles Regt., in service, Mary, 50, mother, Sarah 20, Benjamin 16.
50. <i>David A. Guest (?)</i> , Craighead Co., 13 Arks Regt., in service, William, 56, father. [Powell Township]
51. <i>Wiley J. Altmon</i> , Craighead Co., Col. Lyles Regt., in service, Ziepha, 53, mother. [Maumelle Township]
52. <i>William A. Moon</i> , Craighead Co., 13 Arks Regt., in service, Jane, 64, mother. [Maumelle Township]
53. <i>Joseph W. Altmon</i> , Craighead Co., 13 Arks Regt., dead, Mary, 30, wife, John 7, Julia 2.
54. <i>Andy Logan</i> , Craighead Co., 13 Arks Regt., in service, Mary J., 25, wife, Jane 3.
55. <i>John Balem</i> , Craighead Co., Col. Kitchen Regt., in service, Melia, wife.
56. <i>David Balem</i> , Craighead Co., Col. Kitchen Regt., in service, Rebecca, 18, wife.
57. <i>Henry Cook</i> , Craighead Co., 13 Arks Regt., in service, Susan, 38, wife, Matilda 19, Jacob 14, Henry 4.
58. <i>William Caldwell</i> , Craighead Co., 13 Arks Regt., dead, Mary J., 30, wife, Henry 3.
59. <i>James Gamlle (?)</i> , Craighead Co., Col. Harts Regt., Malissa, 30, wife, George 9, James 6, Jane 2.

60. <i>James Caldwell</i> , Craighead Co., Col. Harts Regt. In service, Nancy, 30, wife, James 7, Jane 5, Jacob 3. [Big Creek Township]
61. <i>Henry Cook Jr.</i> , Craighead Co., Col. Helms Regt., in service, Mary, 23, wife, Samuel 1.
62. <i>Neely Cook (?)</i> , Craighead Co., Col. Kitchen Regt., in service, Jeamah (?), 18, wife, James 1.
63. <i>James Williamson</i> , Craighead Co., McGee Batt., in service, Sarah, 60, mother. [Maumelle Township]
64. <i>William Little</i> , Craighead Co., Col. Lyles Regt., dead, Jane, 30, wife, Dixey 1.
65. <i>John Moor</i> , Craighead Co., Col. Lyles Regt., dead, Tersey (?), 32, wife, Lickly. [Powell Township]
66. <i>William Cook</i> , Craighead Co., Col. McCrays Regt., in service, Malinda, 50, mother, Nancy 6, William 12.
68. <i>Matthew Butler</i> , Craighead Co., Col. Lyles Regt., dead, Tennessee, 33, wife, "4 children names not known."
69. <i>William Grooms</i> , Craighead Co., Col. Ropans (?) Regt., in service, Sarah, 23, wife, Thomas 5, James 1.
70. <i>James Hendricks</i> , Craighead Co., Col Ropans Regt., in service, Louisa (?), 18, wife, one child "name not known." [Big Creek Township]

"We the undersigned composing the County Court of Craighead County do hereby certify that [this] descriptive (?) list was made out by our order from personal knowledge and information, and from careful...examination, that all of said families are needy...that the said soldiers was or is the Father Husband Brother or son in a family depending up him for support...26th day of October A. D. 1864.

Y. Broadaway,
 J. W. Broadaway
 John T. Cook"

CHARTER MEMBERS OF THE ARKADELPHIA, ARKANSAS, FIRST BAPTIST CHURCH, 1851

The following information comes from a typescript found among the records of this church in the microfilm collections of the Arkansas State Archives, Roll MG08041 AHC.

"The church was organized July 15, 1851. Presbytery composed of Elders Samuel Stevenson, Miles L. Langley, and Deacon William C. Rendle. Letters of membership were presented for the following [charter members]:

[Men]

Radford McCargo
 Jonathan McCargo
 Leonard W. Marberry
 E. C. Thomas
 James M. Gilkey
 David W. Heard
 Thomas A. Heard

[Women]

Mrs. Mary Heard
 Mrs. Cordelia R. Marberry
 Mrs. Trussie Jarman
 Miss Mary Jarman
 Mrs. Catherine I. Heard
 Mrs. Sabina C. Trigg

FRANKLIN COUNTY, ARKANSAS, HOME GUARD UNITS, 1861

Franklin County, Arkansas, located on the Arkansas River in western Arkansas was formed in 1837 from the eastern parts of Crawford County. In 1871, several of its southwestern townships were annexed to the new county of Logan. In 1895, Maxey Township was annexed back to Crawford County.

In July of 1861, Franklin County as part of its preparation for the Civil War, appointed men in each township to serve in its local minuteman or home guard units. Many of the men listed here would later serve in the army of the Confederate States of America. The number of guardsmen varied from township to township. The following notation appears at the end of each list of men, “and such other persons as may join them.”

These records were abstracted from Franklin County Court Records Book F, pp. 237-238, MFILM County, Roll 001758 in the collections of the Arkansas State Archives. Many of the names listed below are difficult to read and many more are spelled phonologically. For additional on the location information on Franklin County townships see Russell P. Baker, *Arkansas Township Atlas 1819-1930* (2006), pp. 58-60.

Franklin County Townships in 1861,

- Boston*, located in the northern part of the county,
- Limestone*, located in the northeastern corner of the county,
- Lower*, now in Logan County,
- Middle*, located south of the Arkansas River,
- Mill Creek*, located south of the Arkansas River, in the western part of the county,
- Mulberry*, in the western part of the county,
- Prairie*, in the Charleston, Arkansas, area,
- Short Mountain*, now in Logan County,
- Six Mile*, annexed to Logan County in 1871,
- White Oak*, Ozark, Arkansas, area,
- White Rock*, in the northwestern part of the county.

White Oak Township

[First regiment]

John Herald, Captain	W. H. McMurry
J. H. Robert, 1 st Lieut.	D. Right
M. E. Parker, 2 nd Lieut.	William Helms
J. T. Perry, 3 rd Lieut.	D. A. Canatser
C. Wallace, Orderly sergt	J. Beason
D. Stutaman, (?), 2 nd sergt	J. A. Lunderdail
C. R. Phillips (?), 1 st corp	W. W. Yandel
J. L. McPherson, 2 nd corp	L. R. Covert
Joseph Wallace (?)	T. J. Cerry
L. Phillips	J. Cargles
R. Q. Qualls	W. M. Taylor
T. E. Blunt	W. Litrill
J. C. McMurry	W. Whitehead
L. McPherson	R. A. Baker
H. Blusk	R. Hogan

[Second regiment]

John Morlock, Captain
J. E. Blaylock, 1st Lieut.
W. F. Hoyle, 2nd Lieut.
H. Nichols, 3rd Lieut.
R. L. Hurmun (?),
J. Valentine,
W. Blaylock,

J. J. Nichols,
T. C. Steel (?),
D. M. Adams,
H. W. Blaylock,
W. Garrison,
John C. Nichols,
A. Nichols.

Lower Township

James Sewell, Captain,
H. Swell,
E. N. Titsworth,
E. Evins,
S. Hull (?),
J. C. Myars,

H. Glover,
W. A. Linthacum (?),
C. F. Raney,
J. F. Robertson,
M. McCubbin.

Middle Township

A. Jones (?), [Captain],
J. P. Davis, 1st Lieut.
W. B. McKinney, 2nd Lieut.
W. M. Stevens Ordy Sergt.,
S. Ervins,
W. Huit,
G. W. Mitchel,
G. W. St. Clair,
J. A. Merso (?),
B. Dersey,
J. Browsers,

E. Hail,
J. Isley (?),
N. T. Winton,
S. Lawrence (?),
P. Alley,
J. Cannon,
J. Queiner (?),
J. Ashing,
S. F. Davis,
W. Wadkins,
S. Price,

Mill Creek Township

M. L. Council, Captain,
H. Obar, 1st Lieut.
W. Barton, 2nd Lieut.
Johnson Cato (?),

C. M. Price,
L. Edwards.

Boston and Limestone Townships

W. L. Lane, Captain,
W. R. Jones, 21st Lieut.,
E. Murry, 2nd Lieut.,
J. Kelley, 3rd Lieut.,
S. Melton,
R. McIlery,
L. D. Hill,
L. K. Anderson,
P. Muimad (?),
R. Boyd,
W. Addock,

W. Welton,
W. C. McIlery,
J. M. Boyd,
J. W. Crocket,
A. J. Turner,
T. Dickenson,
E. Mitchell,
B. A. Hill,
J. Dickerson,
J. W. Dickerson,
E. Prewett (?).

Mulberry Township

J. A. McKinney,

J. Shaver,

J. M. Huggins,
R. C. Larimore (?),
J. Young,
L. Simpson,
W. Smith,

Prairie Township

A. Waddle, Captain,
W. Rodgers,
J. King,

L. J. Corzine ,
J. Rogers,
F. Blackwell (?),
S. M. Hobbs ,
J. L. Bryant.

J. Rodgers,
J. Cotton.

AN 1872 SALINE COUNTY, ARKANSAS, HOMICIDE

From the Little Rock, Arkansas, *Daily Arkansas Gazette*, August 2, 1872, p. 2, col. 3

“The Homicide of L. B. Tillery by Edward Aikin.

“Marble Township¹, [Saline County, Arkansas]. I notice in the last issue of your paper the death of Mr. L. B. Tillery² at the hands of Mr. Edward Aikin³, and I desire to give to the public through your columns a true statement of the case, which is as follows: On the 12th of July Mr. John Aikin, brother of Edward Aikin, and Mr. W. C. Tillery, son of Mr. L. B. Tillery, had a little scratch or fight at school, in consequences of an old family feud, which was settled, as all supposed, with credit to the school by the teachers; and on the morning of the 16th Mrs. John Aikin, Edward Aikin and Joseph Guess, with their school books in hand, passed by the house of the deceased, to the field of Mr. C. W. Tillery, father of the deceased, to ascertain when the thrasher would be at their (Aikin’s) house, and were then intending to go on to school. After they had passed the house of Mr. L. H. Tillery, the latter started down to where the thrasher was, his wife remonstrated with him that it would be imprudent, as those boys had gone there. He replied to her that it might as well be settled now as any time. He went. The parties [were] all on the ground. Mr. Tillery says: “John Aikin, did you say that you did not slip up and strike William?” “Yes, I do say I did not slip up and strike him.” Tillery says: “You did.” Aikin says: “You’re a God d---d liar;” whereupon Tillery struck him, and they came to blows. Upon this William Tillery, son of the deceased, took up a pitchfork and did, or was ready to, use it, whereupon Edward Aikin, who was off a piece talking with another Tillery, seeing the situation of his brother, rushed up and shot L. B. Tillery through the heart. These are the facts in this problem and can be established. W. F.”

PARAGOULD, GREENE COUNTY, ARKANSAS, 1884

The following information is taken from *Polk’s Arkansas State Gazetteer and Business Directory, 1884-1885*, p. 436, in the microfilm collection of the Arkansas State Archives Roll, MG-1476. Paragould is the current county seat of Greene County in northeastern Arkansas. Its post office was established in 1880 and called Bula. Its name was changed to Paragould in 1882.¹ Shortly thereafter, the Greene County seat was moved from old Gainesville to Paragould.²

¹ Marble Township is a rural mountain area located in the northwestern corner of Saline County.

² 1870 U.S. Census, Marble Township, Saline County, Arkansas, p. 732B-533A.

³*ibid.*, p. 533A.

¹ Russell P. Baker, *Arkansas Post Offices: From Memdag to Norsk: A Historical Directory, 1832-1900* (2006), pp. 28 and 146.

² www.encyclopediaofarkansas.net/encyclopedia/entry-detail.aspx?entryID=772

“**PARAGOULD.** A prosperous city located at the junction of the Texas & St. Louis Railroad and the Helena branch of the Missouri Pacific Railroad, in Clark township, Greene county, 160 miles northeast of Little Rock and 20 miles southeast of Gainesville, the county seat. Cairo, Illinois, is the nearest banking point. Settled in 1881, it contains churches and schools, a brick yard, a planing mill, a sash, door and blind factory, a weekly Democratic paper, the *Press*, and the usual complement of professional men, special and general stores, blacksmith shops, etc., for a place of its size. Lumber, brick and cotton form the shipments. Population, 1,100. Telegraph, Western Union Express, Pacific and Southern. Mail, daily, J. E. Quinn, postmaster.”

Bailey, W. A., propr. Commercial Hotel,
Bird, Ed, saloon,
Boyakin, John B., real estate agent and
lawyer,
Branner, Mrs., teacher,
Bryant, J. H., billiards,
Burnett, John B., carpenter,
Burnett, Mrs., dressmaker,
Carpenter, W. J., barber,
Carson, C. M., books and stationer,
Carson, C. W., druggist,
Commercial Hotel, W. A. Bailey, propr.,
Conwell, carpenter,
Dickson and Co., clothing,
Dickson and Stalcup, General Store,
Dunigan, Jack, carpenter,
Elliott, J. W., watches, clocks, etc.
Fletcher, barber and watches, clocks, etc.
Foster, W. H., grocer,
Hammond, Henry and Co, brick mnfrs,
Hammond, R., physician,
Hill, Mrs., photographer,
Holt, carpenter,
Hopkins, George, teacher,
Jackson, James, propr Southern Hotel,
Johnston, carpenter,
Jones, W. H., sash, doors and blinds,
grocer and furniture,
Jones, Mrs., propr McKay house,
Killgore, J. D., cigars and tobacco,
Klein and Jacobs, general store,
Knight and Co., meat market,
Landrum Bros., general store,
Loeb and Toller, general store,
Lytle, J. F., lawyer,
McCrae, P., druggist,
McKay House, Mrs. Jones, propr,

McDonald, W. J., livery,
Mack, A. T., lawyer,
Meriwether, W. H. and Son, hardware,
Nesmith, Thomas, blacksmith,
Pierce, H. H., dentist,
Polar, Lewis, carpenter,
Press, The, Mr. Taylor editor, D. B.
Warren, propr,
Pruett, C. D., cotton gin and general store,
Safley, W. A. carriage and wagonmaker,
Scott, Dr., physician,
Simmons, C. F. and Co., books,
stationery and drugs,
Smith, D. A., general store,
Smith, Thomas M., blacksmith,
Sofley, A. W., carriage and wagonmaker,
Sollis, W. H., justice of the peace,
Sollis, W. H. and Co., grocers,
Southern Hotel, James Jackson, propr,
Spain and Bryant, saloon,
Statcup, Susan, dressmaker,
Stegall, dentist,
Stevison, carpenters,
Stuart, John, cigars, tobacco and
confectionery,
Stuart, blacksmith,
Taylor, editor *The Press*,
Thompson, J. Louis, lawyer,
Telley, Frank, carpenter,
Umstead, painter,
Warren, D. B. propt, *The Press* and real
estate agt.,
Wear, Mrs., dressmaker,
Williford and Umstead, painters,
Wilkins, Mike, carpenter,
Wood, J. M., painter,
Workman, W. H., boots and shoes.

FAMILY BIBLE RECORDS OF REV. WILLIAM H. PASLAY

Rev. William Henry Pasley (Paslay),¹ noted Missionary Baptist minister and school teacher in eastern Arkansas, died February 5, 1911, in St Francis County, Arkansas.² He was the son of H. W. Pasley and Mary Wright Pasley who was born in Laurens County, South Carolina, December 18, 1831. His father was a medical doctor and a Baptist minister. His parents moved to Arkansas in 1857. William became a member of the Baptist church at the age of thirteen.³ After graduating from Furman University in Greenville, South Carolina, he moved to Dallas County, Alabama, where he taught school and was ordained as a Baptist preacher in 1858. He relocated to eastern Arkansas in 1872 and settled near Wheatley in Monroe County.⁴ At the time of his death, he had served as the pastor of Baptist churches for some fifty-nine years. His field of labor extended throughout St. Francis, Lee, Monroe, and Phillips counties.

Pasley married three times, 1) Gerdaline Rupum of Alabama, by whom he has four daughters, 2) Julia Price of Alabama, mother on one child, and 3) Ann Dozier of Jasper County, Georgia. By his last wife, he became the father of three sons.⁵ Rev. Pasley is buried in the Forrest City, Arkansas, City Cemetery.⁶ The following entries are from the Pasley (Paslay) family Bible.

“The New Testament of Our Lord and Savior Jesus Christ (Philadelphia, 1859)

[Family of H. W. Paslay]

H. W. Paslay was born Dec 15 1803	W. H. Paslay Dec. 18 th 1831
Mary Wright my Mother on June 21 st 1802	John Paslay Feb. 5 th 1834
[Their children]	Robert Paslay Sept. 27 th 1836
Francis Cook July 3, 1820	Harvey Paslay Oct. 12 th 1840
Keturah Sept. 9 th 1824	Mary Paslay March 9 th 1844
J. C. Paslay June 18 th 1828	

[Family of Rev. W. H. Paslay]

Geraldine Rupum was born April 14th 1842 [Rev. Paslay’s first wife]
Mary Tula Paslay was born Aug. 31st 1859
Fannie Ila Paslay was born Jan. 10th 1862
Ora Lana Paslay was born Oct. 3rd 1863
Almona Geraldine Paslay was born March 22nd 1864
Etta Leta Paslay was born Dec. 3rd 1868
Estelle Paslay was born Sept. 25th 1872
William [Willie] Henry Paslay was born March 21th 1876
Woody Dozer Paslay was born May 20th 1879
Robert Ernest Paslay was born Feb. 8th 1881

Marriages

W. H. Paslay and Geraledine Rupum were married on the 21th October 1858
W. H. Paslay and Julia Price were married June 1870
W. H. Paslay and Ann C. Dozier were married on the 20th of May 1875

¹ In these records the family name is spelled both ways.

² Forrest City, Arkansas, *Times*, February 10, 1911, p. 10, col. 1-3, MFILM 186, Roll 7.

³ 1911 Minutes of the Mt. Vernon Baptist Association, p. 18, MFILM MG07888.

⁴ 1880 U.S. Census, Brinkley Township, Monroe County, Arkansas, p. 294A.

⁵ *Goodspeed’s Eastern Arkansas* (1890), pp. 486-487. See also Kathleen S. Bell, *St. Francis County, Arkansas, Miscellaneous Papers* (1993), pp. 53-56, 61 and 63.

⁶ Findagrave.com/memorial/15336136.

Deaths

Geraldine Paslay died in the hope of an (sic) blessed immortality October 9th 1869

Fannie Ila Paslay fell asleep in her Saviors arms on the 6th of December 1862

Julie Price Paslay died August 1st 1874 in peace with Jesus

Alma Geraldine Paslay died Aug. 26, 1894

Ann Compton Paslay died April 16, 1900

Mary Tula [Paslay] Hall died Nov. 8, 1904

[Rev.] W. H. Paslay died Feb. 5th 1911

Etta Leta Paslay Johnson died Jan. 7, 1936

Estelle Paslay Hambleton died June 22, 1965

The following obituary of Rev. Paslay was published in the Forrest City, Arkansas, *Times*, February 10, 1911, p. 10, col. 1-3, MFILM 186, Roll 7. “[Paslay] was an able, earnest disciple of the Creator, [and] one of the old landmarks of St. Francis county and of Forrest City. Another beloved citizen has gone to his reward. The voice of an able churchman is stilled...in the hearts of countless congregations of those who in years gone by who have listened to him as he expounded the gospel, as it was given to him to preach...though his death was not unexpected, yet none the less were the tidings sad...Elder Paslay was greatly honored by his denomination, being elected Treasurer and Moderator of the Mt. Vernon [Baptist] Association for the last thirty years. He held the position of County [school] Examiner for several years and was closely identified with the educational interests of this state and county.

[He] had been in feeble health for a number of years, but only recently would he consent to give up the work he had so long and faithfully performed. He had been confined to his room and bed for over twelve months...The funeral services were held from the Baptist church, Elder J. P. Garrott officiating. Interment was in the [Forrest City] City Cemetery. He married three times, and now has three sons and three daughters, as follows: Mr. H. W. Paslay of this city; Messrs. R. E. and Willie Paslay, of Oregon; Mrs. J. T. Johnson and Mrs. Murray Hambleton, of this city; and Mrs. C. H. Paslay of Memphis.”

ROBERT SPILSBY COLEMAN, REVELLE, LOGAN COUNTY, ARKANSAS

by Bill Hanks

Coleman Family records¹ verify that Robert Spilsby Coleman² was born February 1, 1812,³ in Rockingham County, North Carolina. He was the son of Tilman Coleman⁴ and his wife, Jennett Walker.⁵

¹Much of the information for this article comes from Emma Lane, *A Record of the Coleman Family as Remembered by Mrs. Rebecca Robertson of Paducah, Kentucky, Who is a Daughter of Tillman Coleman of Rockingham County North Carolina* (1901).

² His middle name was confirmed verbally by my grandmother, Elsie (Coleman) White, and her sister, Elba (Coleman) Findley, daughters of William Samuel “Sam” Coleman, youngest child of Robert Spilsby Coleman and Mary Hutchison Grogan.

³ Robert S. Coleman Family Register, original formerly in possession of the author, p. 139.

⁴ Office of the Registrar of Deeds of Rockingham County, North Carolina, 2nd Deed Book O, p. 83, Tilman Coleman, dec'd, Division of Land; Division of Slaves, transcribed by Tilla Coleman Lindsey.

⁵ Ancestry.com, Birth, Marriage & Death: Tilman Coleman and Jennett Walker, Marriage Bond, January 10, 1811. Rockingham County, North Carolina.

Jennett was a daughter of James Walker and Diannah Smith. He was a grandson of Robert Coleman,⁶ and his wife, Martha Sharpe,⁷ a daughter of John Sharpe and Catherine (maiden surname unknown). In the 1830 census for Rockingham County, North Carolina,⁸ Robert S. is identified by age in the household of his father, Tilman Coleman. Also listed in this census are his uncle and aunt, Captain James and Rebecca Coleman Barnett. James Barnett of Calloway County, Kentucky, obtained a land grant on June 6, 1830. It is possible that Robert Spillsby Coleman and his brother, James Tilman Coleman, accompanied the Barnetts to Kentucky or soon joined them.

Robert's uncle, Robert Spillsby "Spill" Coleman of Stewart County, Tennessee, acquired land from family member, Jane Stubblefield of Calloway County, Kentucky on September 26, 1835.⁹ It adjoined the Barnett property.¹⁰ The presence of two Robert S. Colemans in Calloway County presented an obstacle to determining whether some later land grants were made to the uncle or to the nephew.

Robert Spillsby Coleman was twenty-six years old when he married seventeen-year old Elizabeth Caroline Wray on May 1, 1838, in Calloway County, Kentucky, with the verbal consent of her father. Elizabeth was born on July 21, 1820, to Stephen S. Wray, who was then a resident of Sumner County, Tennessee. Her mother is unknown. At the time of her marriage, Elizabeth's father owned land near the Barnetts and Stubblefields,¹¹ and had served as a Justice of the Peace for Calloway County.¹²

Robert S. and his family are listed in the 1840 census of Calloway County.¹³ The Coleman Family Register records the births of their two children born in Calloway County: Stephen Tilman, born December 19, 1839, and Ann Eliza, born February 3, 1842. In early 1844, Robert received word that his father had died. He traveled with his young family to his parents' home near the town of Leaksville in Rockingham County, North Carolina. After their arrival, Elizabeth died unexpectedly on September 3, 1844, and was buried in the family cemetery. From Tilman Coleman's estate, probated in December 1844, Robert received his division of inheritance, slaves Philip and (female) Harreto, and part of his father's land. Robert sold the North Carolina land for \$440 and returned to his home in Kentucky.

On June 7, 1845, Robert married his second wife Mary Grogan in Calloway County. The auburn-haired Mary Hutchison Grogan was born on August 7, 1822, to Jonathan D. Grogan and his wife, Hester "Jane" Hall, near Leaksville in Rockingham County, North Carolina. At the time of Mary's marriage, the Grogans were residents of Calloway County. The 1840 census for Rockingham County, North Carolina, shows the Grogan family living next to Robert's grandmother, Diannah (Smith) Walker.¹⁴ Mary's link to her parents was established by a Murray, Calloway County, Kentucky, postal card addressed to her with a note from her brother, William C. Grogan, who lived from 1857 in Scott County, Arkansas, until after the close of the Civil War, when he returned to Kentucky.¹⁵ A given name and the surname of Mary's mother, Jane, was proved in her brother's death certificate, and confirmed to be one and the same person by a descendant of Mary's brother, Jonathan "John" S. Grogan.

⁶ Office of the Registrar of Deeds of Rockingham County, North Carolina, Deed Book P, p. 8, Robert Coleman, dec'd, Division of Land; Division of Slaves.

⁷ No marriage bond or record for this couple has been found.

⁸ Ancestry.com, Census & Voters Lists.

⁹ Calloway County, Kentucky Deed Book B, p. 341.

¹⁰ Calloway County Plat Map Township 1, Range 6 E, copy in possession of Connie Blackwell.

¹¹ *Kentucky Land Grants, Vol. 1, Part 1, Chapter VII, Grants West of Tennessee River (1822-1858), The Counties of Kentucky*, p. 884.

¹² Calloway County, Kentucky Deed Book B, p. 23.

¹³ 1840 U.S. Census, Calloway County, Kentucky, p. 83B.

¹⁴ 1840 U.S. Census, Rockingham County, North Carolina, p. 158B.

¹⁵ Connie Blackwell, *Tracing Our Families To and From Arkansas, The Residents of Liberty Cemetery, Logan County, Arkansas* (2009).

On January 22, 1846, Robert S. was granted 160 acres on Wild Cat Creek in Calloway County, not far from Grogan relatives.¹⁶ It was on this land that five children were born to Robert and Mary. The Coleman family register records the following births, John Spillsby, born February 26, 1847, Elizabeth Caroline, born November 24, 1848, Jane Sharp, born January 22, 1851, Emily Rebecca, born July 2, 1854, and Robert Poindexter, born April 1, 1857. The 1850 U. S. Census for District No. 2, Calloway County, Kentucky, lists head of household R. S. Coleman, farmer, with his wife, Mary, and children: S. T., Ann E., John S., and Elizabeth C.¹⁷

In 1857, the Robert Spilsby Coleman family began the long trip from Kentucky to Arkansas with the families of William C. Grogan and Robert McCuiston, husband of Mary's sister, Elizabeth W. Grogan. Robert S. taught school for a time in a barn loft on the Guthrie place in Prairie View, Johnson County, Arkansas.¹⁸ The Colemans remained in Johnson County a few years as is evidenced by the birth of a son recorded in the family register, Dewitt "Dee" Eugene, born July 21, 1859.

The Robert S. Coleman family settled in Chigger Valley, Revalee Township, Scott County, Arkansas,¹⁹ where Coleman is listed on the 1860 U. S. Census as school teacher.²⁰ Robert soon established the Liberty community, and built a schoolhouse, also used as a church, on his property with the help of neighboring families. In 1947, the building was removed to its present location in the Liberty Cemetery on land conveyed by his son, Dee Coleman, in 1912 to the Liberty Cemetery Trustees and their successors. His last child, William Samuel "Sam" Coleman, was born in Scott County, born December 16, 1861.²¹

Robert's first attempt at a money-making crop in Chigger Valley was tobacco, followed by the more successful crops of cotton and sweet sorghum. Though now in ruins, the old cane grinder and dehydrating pan used by Robert to make molasses can still be seen on the property.

Robert Spilsby Coleman died at the age of sixty on May 29, 1872, in Chigger Valley. He was buried in the Liberty Cemetery. For sixteen years, his place of burial was simply marked by a field stone. On April 6, 1888, Robert's widow purchased the headstone that now marks his grave. Mary H. (Grogan) Coleman died at the age of eighty-five on May 20, 1908, at the home of her son, Dee Coleman at Liberty. Mary was buried beside Robert in Liberty Cemetery. Her place of burial is marked by a tall, marble monument commissioned by Dee Coleman in memory of his mother and father.²²

The name Spillsby (Spilsbe, and its variant spellings) appears in the given names of the descendants of Robert Coleman and his wife, Ann Spilsbe, and the given names of the descendants of the younger Daniel Coleman of Cumberland County. It has long been my belief, based on a preponderance of the evidence, that my second great grandfather, Robert Spillsby Coleman, was descended from the line of Daniel Coleman. Having exhausted all known documentary sources and family remembrances more than thirty years ago, I was encouraged by a cousin to participate in Family Tree DNA (FTDNA) Family Finder testing with the hope that results would in time prove my Daniel Coleman line theory to be correct.

I am very happy to report that my DNA results did prove me correct, but only after a Y-111 test. After years of extensive conventional research, Judge S. Bernard Coleman of Fredericksburg, Virginia concluded that Samuel was a son of Daniel Coleman and that Daniel was a son of Robert Coleman of Mobjack Bay, Abbingtion Parish, Gloucester County, Virginia.

¹⁶ Ancestry.com, Wills, Probates, Land, Tax & Criminal: Calloway County Land Records.

¹⁷ 1850 U.S. Census, District No. 2, Calloway County, Kentucky, p. 430A.

¹⁸ Logan County Historical Society, *Wagon Wheels*, Summer 1995, Vol. 15, No. 2, p. 11.

¹⁹ Original deed to his land was destroyed in the 1877 Paris Courthouse fire. Land descended through the family until 2014 when it was sold to a neighboring land owner.

²⁰ 1860 U.S. Census, Revalee Township, Scott County, Arkansas, p. 762.

²¹ Coleman ancestor of Bill Hanks.

²² Liberty Cemetery, 72 Coleman Road, Magazine, Logan County, Arkansas.

These last two statements are not proven by DNA.²³ The compared test results of three descendants prove that Robert Spilsby Coleman is descended from male ancestors, who married females with surnames that include Bayes, Bostick, Cary, Christian, Leake, Mask, New, Sharpe, Smith, Stevens, Thomas, Walker and others unknown. The combination of the surnames of Bostick, Christian, Leake, Mask and New, proven in the DNA of the three descendants are well-documented in Virginia records, and are known to appear only in the genealogies of two Coleman men, which confirm Robert Coleman (b. 1751-1755, d. 1810-1811) of Leaksville, Rockingham County, North Carolina was the son of James Coleman and his wife, Elizabeth Leake of Albemarle County, Virginia, who was a daughter of Walter Leake and Judith Mask of St. James Parish, Goochland County, Virginia.²⁴ He was also the grandson of Samuel Coleman and his wife, Ann Christian, of St. James Parish, Goochland County, Virginia, who was a daughter of Thomas Christian Jr. and Rebecca New of St. James Parish, Goochland County, Virginia.

Records have consistently linked my fourth great grandfather, Robert Coleman, with John Leake of Goochland County and Albemarle County, Virginia, and Guilford County and Rockingham County, North Carolina. Land records prove the James Coleman and John Leake families removed from Albemarle County, Virginia to Rowan County, later Guilford County, and then Rockingham County, North Carolina during the same period. We know now that Robert Coleman, the son of James Coleman, chose to remain in Guilford/Rockingham County at the time the rest of his family returned to Albemarle County, Virginia.

On July 11, 1767, James McCain of Rowan County sold to James Coleman his grant of 125 acres on the north side of the Dan River, beginning at a corner oak on the river, then north ninety poles to a corner white oak, then west 180 poles to a red oak, then south 132 poles to a hickory on the Dan River, then down the river to the beginning. The witnesses were, Edward Hunter, James Conway, James Roberts Jr. This was proved in the August 1774 Term Guilford County Court by Edward Hunter.²⁵

On February 9, 1773, James Coleman of Guilford County sold to John Leake some of the same grant on the north side of the Dan River, formerly granted James McCain. Witnesses were, Samuel Henderson, Isham Browder, William Henderson.²⁶ I am also a DNA match with the families of Grizzell, Spilsby, and Terry who would probably have married Coleman men, although this is still being researched.

ONE FAMILY'S JOURNEY FROM SOUTH CAROLINA TO ARKANSAS, 1874

One question often posed by Arkansas researchers is about possible routes our ancestors took when coming to Arkansas. This article discusses one such way that ran across the northern parts South Carolina, Georgia, Alabama, Mississippi, and into Arkansas. It is based upon a short "way bill" kept by William Milton McCully of York County, South Carolina, as he traveled with his new wife, Antonia Wylie and their young son, DeKalb Wylie McCully, from South Carolina to Arkansas about 1874.

It comes from the Antoinia Wylie McCully Collection, VFHC #4358 at the Arkansas State Archives in Little Rock. Their journey, probably by wagon, crossed through South Carolina, Georgia, Alabama, and Mississippi before entering Arkansas. Such a journey took about a month and a half or more. The entries listed below may indicate several days of travel between individual points.

“[Beginning at Rock Hill, York County in northern South Carolina]
Crossed Board River at Smiths Ford

²³ S. Bernard Coleman, *Some of the Descendants of Robert Coleman of Gloucester County, Virginia* (1959), pp. 9, 21, 59, and 111.

²⁴ Rev. William Douglas, *The Douglas Register, 1750-1797* (1928), pp. 16-74.

²⁵ Guilford County, North Carolina, Deed Book 1, p. 280.

²⁶*ibid.*, p. 207.

Passed Lime Stone Springs
Crossed Packet [Pacolet] River
Passed Spartanburg Village [South Carolina]
Crossed Little Tiger River and Ballingers Mill
Crossed South Tiger River
Passed Chicks Springs
Passed Greenville [South Carolina]
Crossed Saluda River
Passed Pickensville [Pickens, South Carolina]
Passed Pendleton [South Carolina]
Crossed Seneca River on Maxwells Bridge
Crossed Tugaloo River on Knoxs Bridge
[Entered northern Georgia]
Passed Carnesville
Passed Gainesville
Crossed Cattohoochee River on Browns Bridge
Passed Canton [in Cherokee County]
Crossed High Tower River on Field's Bridge
Passed Cassville
Passed Kingston
Passed Rome [in Georgia]
Crossed Ostonola River at Rome on Shorters Bridge
[Passed into northern Alabama]
Passed Cedar Bluff
Forded Chattooga River
Passed over Lookout Mountain
Passed Sand Mountain
Passed Warrenton
Crossed Raccoon Mountain
Passed Summerville
Passed Blue Spring
Passed Decatur
Passed Courtland
Passed Tuscumbia
[Passed into northern Mississippi]
Passed Jacinto
Passed Rienzi
Passed Ripley
Passed Salem
Passed Holly Springs
Passed Buck Snort
Crossed the Cold Water River
[Passed into Arkansas]
Crossed Mississippi river at Sterling [located at the mouth of the St. Francis in
Phillips County, Arkansas.]”

William Milton McCully was born in February of 1839, the son of James Ramsey McCully (1813-1893) and Susan M. S. Adams (1816-1884) in York County, South Carolina.¹ At the outbreak of the Civil War in 1861, he was a medical student Davidson College in North Carolina. In August of 1861, he enlisted in the Confederate Army as a private in the Twelfth South Carolina Infantry, where he saw action at the battles of Cedar Mountain and Second Manassas. During this last engagement, he suffered a severe wound that rendered him unfit for further field service. During the remainder of the war, he served as a hospital steward in Richmond, Virginia.²

In 1870, McCully married Antonia Wylie (1843-1922), the daughter of Dekalb B. and Jeanette Ross (1821-1885).³ After their journey to Arkansas, the young couple settled in Dallas County. In 1878, they moved to Malvern, Arkansas, where William operated a drug store.⁴ By 1890, the family had relocated to Little Rock where William worked in the offices of the Arkansas State Treasurer and the Arkansas State Auditor.⁵ He was also a lifelong members of the Presbyterian Church and served as an Elder.⁶

William and Antonia were the parents of several children, Dekalb W. (1872-1888), Susan (1875-), Jeanette R. (1877-1886), Mary H. (1879-1881), Jane (1880-), James B. (1882-), and Anna R. (1885-).⁷ Mrs. McCully died in Little Rock on November 27, 1922. She and her husband, as well as four of his children are buried in the Oak Ridge Cemetery in Malvern, Arkansas.⁸ William was a descendant of three Revolutionary War veterans, William Adams, William Wyle, and Richard Evans. His daughter, Anna R., the wife of Charles R. Beall, was an early member of the Daughters of the American Revolution.⁹

SOME 1901 PIKE COUNTY, ARKANSAS, VOTERS

The following list of forty-five Pike County, Arkansas, voters was compiled as part of a 1901 petition drive seeking a special elected on “the question of removing the Court Seat in this county from Murfreesboro to Pike City.” The men who signed this petition wished to relocate the Pike County courthouse and jail from Murfreesboro to the new town of Pike City, a new railroad community located northeast of Murfreesboro. Its post office was founded in 1896 and was closed in 1955.

Pike City is now a small rural farming community. This petition drive was unsuccessful, and the county seat remained in Murfreesboro. The men on this list were residents of District Three of Eagle Township, located on the norther boundary of the county along its line with Montgomery County. The original petition is in the Small Manuscript Collection (SMC) at the Arkansas State Archives in Little Rock, Box 86, Folder No. 15, MG00248.

¹ 1850 U.S. Census, York County, South Carolina, p. 300A and *North American Family Histories, 1500-2000* at www.ancestry.com/interactive/61157/46155_b290219-00268?pid=2524933&backurl=https://search.ancestry.com/cgi-bin/sse.dll?dbid%3D61157%26h%3D2524933%26indiv%3Dtry%26o_vc%3DRecord:OtherRecord%26rhSource%3D7602&treeid=&personid=&hintid=&usePUB=true&usePUBJs=true.

² *Confederate Military History, Extended Edition, Vol. X* (reprint, 1988), pp. 530-531.

³ 1860 U.S. Census, Chester County, South Carolina, p. 66b and 1870 U.S. Census, Smith Township, Dallas County, Arkansas, 465B.

⁴ Arkansas State Archives Clipping File 1.357, Roll MG 02880 AHC and 1880 U.S. Census, Fenter Township, Hot Spring County, Arkansas, p. 576B.

⁵ *1895 Little Rock, Arkansas, City Directory*, p. 536.

⁶ Clipping File, op cit.

⁷ 1900 U.S. Census, Big Rock Township, Pulaski County, Arkansas, p. 21B.

⁸ Little Rock, Arkansas, *Arkansas Gazette*, November 28, 1922, p. 8. Col. 5-6,

⁹ 1910 U.S. Census, Big Rock Township, Pulaski County, Arkansas, p. 53B-54A and *North American Family Histories, op cit.*

1. B. T. Clement
2. Joseph Florence
3. S. J. O'Neal
4. W. N. Williams
5. A. F. Wilson
6. R. R. Adams (?)
7. O. P. Baling (?)
8. Z. R. Parker
9. M. J. Dunlap
10. C. R. Dunlap
11. A. N. Puckell
12. C. E. Sutton
13. Sam Parker
14. W. T. Dingler
15. W. H. Scogin
16. S. G. O'Neal
17. J. N. Taylor
18. E. W. Perkins
19. J. H. Sutton
20. R. H. Pasley
21. W. T. Hendon (?)
22. F. A. Douglas
23. W. C. Cowart
24. John Hale
25. W. D. H. Duggan
26. M. R. Whisenhunt
27. W. H. Smaling Jr.
28. W. H. Yarbough
29. Robert A. Welch
30. R. H. Parker
31. D. B. White Jr.
32. G. W. White
33. J. W. White
34. J. C. Mitchel
35. H. W. Mitchel
36. W. C. Vaught
37. G. G. Whisenhunt
38. H. B. White
39. A. H. Rains
40. G. W. Lawless
41. J. H. Lawless
42. Dave White
43. G. F. White
44. L. C. Parker
45. W. C. Walls

CALHOUN COUNTY, ARKANSAS, DEALS WITH THE RESULTS OF WAR, 1862

by William T. Carter

During the Civil War Arkansas counties were faced with the obligation to support the military companies then being raised for the Confederate Army, to care for the often indigent civilian population left behind, and to maintain peace in the county. Claims were filed against the county by persons who supplied money or goods to help the military effort or to sustain the remaining civilian population. The following records from Calhoun County Court Book B provide an excellent view of the various claims and other items as the county courts dealt with these times.¹ Below are the names of justices of the peace, military officers, claimants, amounts requested, supplies provided, and persons helped. Also mentioned are the persons appointed by the county to oversee specific tasks during 1862. The page numbers are those in the original book.

Note, in order to eliminate the unnecessary verbiage of court language, items have, in most cases, been summarized. The County Clerk used an inordinate number of capital letters that were not needed and almost no punctuation. To improve readability, many capital letters have been eliminated and commas and periods inserted to increase understanding.

¹ Calhoun County, Arkansas, Court Book B, MFILM County Roll 407.

“p. 52, August 27, 1862 It is Ordered that there be, and is hereby levied a Special County Military Tax of One Twelfth of One per Cent on all the objects of taxation within the County of Calhoun for the year 1862, for the purpose of Supplying the destitute families of Soldiers in Calhoun County. And it is further Ordered that there be, and is hereby appointed three discreet Men householding in Each Township who Shall be and are hereby Authorized a Majority of the three to Call on the Clerk to issue from time to time Such amount of Military Scrip as they May deem proper (Not to Exceed the amount of Said tax) to bear Interest at the rate of Eight per Cent per annum to be good for County Military tax, And all the issue to be due and payable when the Collector of Revenue has Collected and Settlement Made in accordance with law.

Names Commissioners appointed,	
<i>Moro Township</i> , W. S. Harris, James Stroud, & A. McLemore	
<i>Caswell Township</i> , John S. Waller, L. B. Moore, & Zac Butler	
<i>Huey Township</i> , John Cornett, Wm. Colvert, and Nelson Fike	
<i>Locust Bayou Township</i> , I. T. Robinson, J. W. Overstreet, & W. F. Proffitt	
<i>Champagnolle Township</i> , B. Etheridge, Frank Little, & I. B. Nettles	
<i>Fayette Township</i> , Moses Parker, Elbert Lambert, & J. B. Dunn	
<i>Jackson Township</i> , Bennett Harrell, Joseph Johns, & R. S. Tarvin	
<i>Franklin Township</i> , N. M. Hunt, W. J. Pickett, & Christopher Brown	
<i>Dallas Township</i> , Thomas Rowland, Wm. Moffett, & Jacob A Bull	
<i>Jefferson Township</i> , T. G. Chambers, I. T. Kendrick, & Saml Spear	
<i>Polk Township</i> , Moses Johnson, A. N. Means, & D. Daughert...	
p. 23, Monday January 1862, James Dickinson, \$3.20, for bacon, for Mrs. Asher Walker	
p. 24, A. J. Floyd, \$4.48, articles for Asher Walker family and for Willis B. Sumners family	
Judge Robert B. Earnest, J. P. Joseph H. Means, J. P. Alexander Whiddon	
p. 24, Tuesday, January 28, 1862, W. M. D. L. Wood, \$9.65, for pork and shoes, for Mrs. A. F. Ritchie, rejected, John Hanna, \$4.35, for bacon, for Mrs. Sloan	
p. 24-25, W. C. Flanray, \$3.12, cash, for Mrs. Edwards and Mrs. Singleton, allowed \$2.50	
p. 25, John Cornett, \$5.40, for beef, for Mrs. George Hill, W. M. D. L. Wood, \$47.50, for transporting [a local company of Confederate soldiers, the] Calhoun Invincibles, Capt. O. H. P. Black, commander, James F Wood, \$25.00, ditto, Jemison Ware, \$60.00, ditto, William Brown, \$60.00, for transporting Calhoun Invincibles, F. L. Murph, \$30.00, ditto	
J. B. Strong, \$30.00, ditto, Judson O. Echols, \$50.00, ditto, Joseph Oliver, \$1.00, ditto, John M Farrier, \$30.00, ditto	
p. 25-26, John Sehon, \$3.00, for provisions, for Mrs. Singleton	
p. 27, Tuesday January 28, 1862, John H. Means, \$3.38, for bacon & meal, for Mrs. Edwards, To buy Clothing for the Calhoun Invincibles	
Paid out at Camden	\$175.54
McLemore & Atkinson	32.50
Sol Altschul	10.00
Perry Tomlinson	91.14
L & G Elle	49.75
W Whittington	6.00

William Steel	7.35
W. S. Thornton	40.00 and 2.84
O. H. P. Black	11.73
Sol Altshul	2.06
J. H. Means	5.63
p. 31, Wednesday January 29, 1862, Stringfellow & Teague, \$54.89, for Blacksmithing, for Calhoun Escopets & the Calhoun Invincables two volunteer companies, D. P. Hoffman, for Sundry articles, for volunteers, rejected, Stringfellow & Teague, \$3.50	
p. 32. Captain Joseph B. McColloch, of Company A, South Arkansas Regiment, E. McNaire, Col. Commandant, was appointed by the county court to collect, receive, and receipt for all money due said county from the Confederate States of America for wagons, teams and other property belonging to said county turned over to the Quarter Master of said regiment by said company. Judson O. Echols was appointed to receive said money from Captain Joseph B. McColloch, give him receipts, and pay the money over to the County Clerk.	
W. G. Walker, \$1.00, for meal, for Mrs. Edwards	
Thursday Morning January 30 th 1862, R. B. Earnest presiding Judge, Joseph H. Means and A. J. Maner associates	
p. 33, John M Farrior, \$13.18, for goods, for Capt. O. H. P. Black's Co. of Volunteers, Alexander Mason, \$10.40, James M Brown, Sheriff, \$3.90	
Tuesday April 29 th 1862	
p. 46, W. M. D. L. Wood, \$7.00, for tent cloth, for Volunteers, D. P. Hoffman, \$42.67, for clothing, for Capt. Black's Co. of Volunteers."	

PULASKI COUNTY, ARKANSAS TERRITORY, DELINQUENT TAXPAYERS, 1821

On April 23, 1822, the Little Rock, Arkansas, *Arkansas Weekly Gazette* published a list of Pulaski County "Delinquents," who had been assessed taxes in the county for 1821 but had not paid them as of the date of the publication of this notice. It was prepared by Gabriel Greathouse, the county sheriff. Pulaski County was created in 1818 and covered much of the western and southern part of the territory.¹ It is of note that the 1820 U. S. Census of Arkansas Territory was destroyed many years ago. This list gives some clues to several of the territory's earliest settlers. What makes this list important is that it indicates why the taxpayers had not paid their 1821 assessments. Several them had "removed" from the county. Others were now living in an area once in the county but by 1821 had been taken to help form a new Quapaw Indian reservation, stretching from Little Rock south to near Arkansas Post on the lower Arkansas River. It should also be noted that many of those now living in the new native America reservation had French surnames, reflecting their ties to the original French settlers in what is now Jefferson and Arkansas counties. It is obvious that the sheriff has a struggle with the names of his French speaking fellow citizens since many of them spoke little or no English.

¹ This newspaper file is in the collections of the Arkansas State Archives, MFILM News 000430, Roll 1.

Howel Demos, removed,
Nathan Mires, removed,
Paul Obar, removed,
Joab Row, removed,
Walker Boran, removed,
Benjamin Nixon, removed,
Thomas Higginbottom, removed,
John Pierce, removed,
John Anger, removed,
George Ivey, removed,
John Wright, removed,
John King, removed,
Augustus Lartion, removed,
William Collins, removed,
Samuel D. Wollard, removed,
Thomas Collett, removed,
Jonathan Weaver, removed,
Ambrose Lafave, not of age
James Sanders, overcharge,
Francis Vangine, sen., overcharge,
Moses Embry, overcharge,
Antoine Dechasin, living in Quapaw boundary,
Joseph Bartelimew, living in Quapaw boundary,
Frances Coussotte, living in Quapaw boundary,
Caddy Coussotte, living in Quapaw boundary,
Pierre Coussotte, living in Quapaw boundary,
Michael Bonne, living in Quapaw boundary,
Joseph Payette, living in Quapaw boundary,
Joseph Bonne, living in Quapaw boundary,
Benjamin Kurkendall, living in Quapaw boundary,
Ephraim C. Davidson, insolvent,
Baptist Ambo, Indian boundary,
Ambrose Mason, deceased,
Pierre Billette, Indian boundary,
John Baptist, Indian boundary,
Baptist Trudeau, Indian boundary,
Francis Trudeau, Indian boundary,
Joseph Trudeau, Indian boundary,
John Trudeau, Indian boundary,
John Taylor, remove.

MUSTER ROLL OF THE COLUMBIA COUNTY GUARDS, 1861

As the Civil War began, local military units were formed throughout the state. Before long, many of these units from central and southern Arkansas were on their way too Little Rock to be mustered into Confederate military service. The following muster roll of the Columbia, County Guards was published in the Little Rock, Arkansas, *True Democrat*, June 6, 1861, p. 3, col. 7, MFILM News 000422, Roll 4. It was composed of some ninety-five officers and men from Columbia County in far southern Arkansas. It is noteworthy that this group had organized itself into a full military style unit even before being officially mustered in. It later became Company G of the Sixth Arkansas Infantry, C. S. A. For a history of this unit, see https://en.wikipedia.org/wiki/6th_Arkansas_Infantry_Regiment.

Officers:

J. P. Austin, Captain
N. J. Garrett (?), 1st Lieut.
J. S. Miller, 2nd Lieut.
Thomas Seay, 3rd Lieut.
W. C. Nations, Orderly Sergeant
A. A. Vestal, 2nd Orderly Sergeant
O. H. P. Caldwell, 3rd Orderly Sergeant

J. L. Adair, 4th Orderly Sergeant
James A. Hightower, 5th Orderly
Sergeant
C. B. Brown, 1st Corporal
James Paschal, 2nd Corporal
W. N. McEnhern, (?) 3rd Corporal
Lee Machen, 4th Corporal

Privates:

C. Carlock,
H. W. Goodman,
P. T. Elmore,
W. H. Woodward,
J. M. Kenner,
G. W. Bolger,
N. J. Wise,
J. C. Shuttleworth,
D. D. C. McMillen,
J. T. Wyrick,
S. R. Walker,
J. N. Wise,
M. W. Barnwell,
J. A. Sepp,
H. F. Robinson,
W. A. Franklin,
Cicero Davis,
J. W. Dodson,
J. T. Seale,
H. B. Harris,
L. A. Smith,
H. W. Phillips,
John Burk,
J. A. Roberts,
H. C. Dalton,
Samuel Crayton,

James Osborne,
G. L. Dickson,
W. L. Jean,
Richard Lollar,
H. M. Bolger,
J. N. B. Shuler,
S. J. Johnson,
H. M. Davis,
H. B. Flaming,
J. L. Hammock,
J. B. Elledge,
P. M. Cross,
B. J. Mattison,
John Elliot,
W. W. Guran,
John Freeman,
James Mercar,
M. E. Bird,
A. A. Bolger,
B. F. Staggs,
H. P. Bolger,
G. M. Holt,
W. G. McCaghren,
G. McD Morrow,
H. J. Wise,
B. McDaniel,

G. B. Archer,
B. F. Godbold,
J. A. Nance,
W. J. Strong,
G. W. Booth,
James F. Abney,
B. F. Wilson,
J. A. Drake,
J. A. McEachern,
C. F. Rodgers,
William Seale,
J. T. Smith,
P. J. Reynolds,
J. C. Jones,
A. G. Bird,
S. H. Waldie,
J. H. Franklin,
B. V. Hays,
B. P. Shannon,

John Glanton,
R. S. Flowers,
W. B. Franklin,
R. W. Johnson,
E. M. Norton,
H. Williams,
Samuel Campbell,
T. Wyley,
James Gates, fifer,
F. L. Machen,
F. E. Starns,
William J. Jones,
James Foley,
D. G. Garrison,
R. C. [Robert C.] McMillen.
Dinton Dennis (?), removed,
Asa Beeley, removed.”

CAPTAIN JESSE BEAN’S COMPANY, U. S. MOUNTED RANGERS, 1832

by Russell P. Baker

In 1832, Congress authorized the organization of two new armed units of mounted troops to protect America’s western frontier. One unit was raised in the Arkansas Territory and commanded by Captain Jesse Bean who then lived in Batesville. He was an accomplished woodsman and one of the few company officers with any military experience.

According to the July 18, 1832, Little Rock, Arkansas, *Arkansas Weekly Gazette*, Bean had fought at the battle of New Orleans, Louisiana, and served in the Indian Wars in Florida. His father, Robert Bean, was a Revolutionary War veteran, and an early settler at Batesville. He was also the speaker of the Arkansas Territorial legislature. His family’s standing in Arkansas and long association with President Andrew Jackson’s administration probably improved his chances for selection as a military commander. After raising his company at Batesville, Bean was sent west in August of 1832 and reached Fort Gibson in what is now Oklahoma in September, where the unit was stationed.¹

Bean was born about 1785 in Washington County, Tennessee. By 1830 he was living on Polk Bayou three miles from Batesville in Ruddle Township of Independence County, Arkansas.² His wife, whose name was Nancy Miller, was the sister of Col. John Miller.

They had one child, a daughter named Jane Elizabeth Bean, who married Dr. Trent C. Aikin.³ Bean died at his home near Batesville, Arkansas, on January 25, 1844, after a “long and painful illness—his disease the consequence of many and frequent exposures in early life.”⁴

¹ See *The Independence County, Arkansas, Chronicle*, April 1960, pp. 35-38.

² 1830 U.S. Census, Ruddle Township, Independence County, Arkansas, p. 221B.

³ S. W. Stockard, *The History of Lawrence, Jackson, Independence, and Stone Counties* (1904), pp. 129-132. See also www.ancestry.com/family-tree/person/tree/7359569/person/-1109895654/facts?_phsrc=QmO6112&_phstart=successSource,

⁴ Van Buren, Arkansas, *Arkansas Intelligencer*, February 10, 1844, p. 3, col. 3, MFILM news 000665, Roll 1. See also Independence County Letters of Administration Book 1821-1845, p. 194.

For a detailed discussion of the history and career of this military unit see www.encyclopediaofarkansas.net/encyclopedia/entry-detail.aspx?entryID=2419. The following roster of Captain Jesse Beans Company of Mounted Rangers, Army of the United States, was published in Clarence Edwin Carter's *The Territorial Papers of the United States, Vol. XXI, Territory of Arkansas 1829-1836* (1954), pp. 544-551. Spadra was a post office on the Arkansas River in what is now Johnson County, Arkansas. McClanes B. was McClane's Bottom, another community on the Arkansas River in what is now Logan County, Arkansas. Red River post office was on the Red River in what is now Hempstead County, Arkansas, where it is called Fulton. The locations of Clarks Store and Buynam have not been determined. "A. T."=Arkansas Territory.

"Muster Roll of Captain Jesse Beans Company of Mounted Rangers of the United States, Commanded by Major Henry Dodge from the twenty-fifth day of August 1832 to this twenty-sixth day of September 1832."

Names	Rank	Date of Enlistment	Period	By Whom	Where	Comments
Jesse Bean	Capt.					
Joseph Pentecost	1 st Lt.					
Robert King	2 nd Lt.					
George Caldwell	3 rd Lt.					
Edward W. Scruggs	Sergt	30 th July 1832	1 year	Capt. Bean	Batesville	
Robert A. Gibson	Serg	25 th August	1 year	Lt. Pentecost	Batesville	
Morfet E. Trimble	Serg	20 th July	1 year	Capt Bean	Batesville	Sick
Isaac Bean	Serg	25 August	1 year	Lt. Pentecost	Batesville	
Furgus S. Morrison	Serg	30 July	1 year	Capt Bean	Batesville	
John W. Patrick	Corpl	16 th Augt	1 year	Lt. King	Spadra	
Annianias Erwin	Corpl	25 August	1 year	Lt. Pentecost	Batesville	
James Elms	Corpl	30 th July	1 year	Capt Bean	Batesville	
Jarret Wayland	Corpl	15 Augt	1 year	Lt. Pentecost	Batesville	Sick
John England	Corpl	15 Augt	1 year	Lt. King	Clarks Store	
Elijah G. Shrum	Musician	30 th July	1 year	Capt Bean	Batesville	
Alexander C. Childers	Musician	25 Augt.	1 year	Lt. Pentecost	Batesville	
Akin, Eli V.	Prvt.	30 July	1 year	Capt Bean	Batesville	

Allen, Washington	Prvt.	10 Aug.	1 year	Capt Bean	Batesville	
Archer, Andrew B.	Prvt.	25 Aug.	1 year	Lt. Pentecost	Batesville	
Alston, James	Prvt.	16 Aug.	1 year	Lt. King	Spadra	
Allen, Westly	Prvt.	30 July	1 year	Capt Bean	Batesville	Horse strayed
Bennett, James H.	Prvt.	30 July	1 year	Capt Bean	Batesville	Horse not present
Barr, James	Prvt.	13 Aug	1 year	Lt. Caldwell	Buynam	
Baird, Benjamin H.	Prvt.	7 Aug	1 year	Lt. Pentecost	Red River	
Brounts, Joshua	Prvt.	15 Aug	1 year	Lt. King	McClanes Bottoms	
Bayles, Caleb	Prvt.	21 Aug	1 year	Lt. Pentecost		
Compton, John B.	Prvt.	30 July	1 year	Capt Bean	Batesville	
Clements, Jeremiah C.	Prvt.	30 July	1 year	Capt Bean	Batesville	Sick
Caldwell, James	Prvt.	3 rd Aug	1 year	Capt Bean	Batesville	Sick
Caldwell, Abiram	Prvt.	14 th Aug	1 year	Capt Bean	Batesville	
Dussy, David	Prvt.	13 Aug	1 year	Lt. Caldwell	Buynam	
David, Abnor	Prvt.	11 Aug	1 year	Cap Bean	Batesville	
Dudley, William	Prvt.	9 Aug	1 year	Lt. Pentecost	Red River	
Darten, Hezekiah	Prvt.	25 Aug	1 year	Lt. Pentecost	Batesville	
Davis, Johnson	Prvt.	25 Aug	1 year	Lt. Pentecost	Batesville	
Dennis, John	Prvt.	25 Aug	1 year	Lt. Pentecost	Batesville	
Dillard, John	Prvt.	25 Aug	1 year	Lt. King	Batesville	
Elms, Garrett	Prvt.	14 Aug	1 year	Capt Bean	Batesville	
Elms, David M.	Prvt.	30 July	1 year	Capt Bean	Batesville	
Fulbright, William	Prvt.	30 July	1 year	Capt Bean	Batesville	
Gill, Addison	Prvt.	3 rd Aug	1 year	Capt Bean	Batesville	
Guist, Isaac	Prvt.	6 Aug	1 year	Capt Bean	Batesville	
Griggs, Samuel	Prvt.	25 Aug	1 year	Lt. Pentecost	Batesville	

Griffs, Mays	Prvt.	3 Aug	1 year	Lt. Pentecost	Batesville	
Garner, John C.	Prvt.	25 Aug	1 year	Lt. Pentecost	Batesville	
Hammond, John	Prvt.	30 July	1 year	Capt Bean	Batesville	
Hammon, James M.	Prvt.	30 July	1 year	Capt Bean	Batesville	
Hulsey, William B.	Prvt.	30 July	1 year	Capt Bean	Batesville	Sick
Hogan, John W.	Prvt.	15 Aug	1 year	Lt. King	Mclanes Bottoms	
Hyles, David	Prvt.	16 Aug	1 year	Lt. King	Spadra	
Hyde, Ezekiel	Prvt.	25 Aug	1 year	Lt. Pentecost	Batesville	
Howell, Harvey B.	Prvt.	25 Aug	1 year	Lt. Pentecost	Batesville	
Ivy, Thomas G.	Prvt.	25 Aug	1 year	Lt. Pentecost	Batesville	Sick
Johnson, Samuel	Prvt.	14 Aug	1 year	Capt Bean	Batesville	
Johnson, Marbra	Prvt.	10 Aug	1 year	Capt Bean	Batesville	
King, Drewry	Prvt.	13 Aug	1 year	Lt. Caldwell	Buynam	Sick
Kister, John	Prvt.	25 Aug	1 year	Lt. Pentecost	Batesville	Sick
Kellett, William	Prvt.	25 Aug	1 year	Lt. Pentecost	Batesville	
Kavanaugh, John	Prvt.	25 Aug	1 year	Lt. Pentecost	Batesville	Back in A. T.
Litchfield, Samuel	Prvt.	2 Aug	1 year	Capt Bean	Batesville	
Labass, John	Prvt.	25 Aug	1 year	Lt. Pentecost	Batesville	
Logan, Massa	Prvt.	25 Aug	1 year	Lt. Pentecost	Batesville	Sick
Logan, Bennett T.	Prvt.	16 Aug	1 year	Lt. King	Sparda	
Lee, John	Prvt.	25 Aug	1 year	Lt. Caldwell	Horsehead	Sick
McClenden, Willis	Prvt.	30 July	1 year	Capt Bean	Batesville	
McKinny, Clark S.	Prvt.	30 July	1 year	Capt Bean	Batesville	

McCloud, Neill A.	Prvt.	15 Aug	1 year	Lt King	Spadra	
Meacham, James A.	Prvt.	30 July	1 year	Capt Bean	Batesville	
Meacham, Christopher	Prvt.	3 rd August	1 year	Capt Bean	Batesville	Back in A. T.
Murphy, Mark	Prvt.	25 August	1 year	Lt. Pentecost	Batesville	
Markam, Thomas Sr.	Prvt.	23 Aug	1 year	Lt. Pentecost	Batesville	Sick
Markam, Thomas Jr.	Prvt.	25 August	1 year	Lt. Pentecost	Batesville	Sick
Manson, William	Prvt.	25 Aug	1 year	Lt. Pentecost	Batesville	
Martin, James	Prvt.	15 Aug	1 year	Lt. King	McClans Bottom	
Nipper, Solomon	Prvt.	2 Aug.	1 year	Capt Bean	McClans Bottom	
Newcomb, Thomas	Prvt.	25 Aug	1 year	Lt. Pentecost	Batesville	Sick
Newman, John	Prvt.	21 Aug	1 year	Lt. Pentecost	Batesville	
Nelson, Charles	Prvt.	24 Aug	1 year	Lt. Pentecost	Batesville	
Osburn, James	Prvt.	2 Aug	1 year	Capt Bean	Batesville	
Oneal, John	Prvt.	25 Aug	1 year	Lt. Pentecost	Batesville	
Powers, Simmeon	Prvt.	25 Aug	1 year	Lt. Pentecost	Batesville	
Palmer, David M.	Prvt.	20 Aug	1 year	Lt. Pentecost	Batesville	Sick
Palmer, King L.	Prvt.	30 July	1 year	Capt Bean	Batesville	Sick
Penter, Martin	Prvt.	30 July	1 year	Capt Bean	Batesville	
Peel, Richard	Prvt.	30 July	1 year	Capt Bean	Batesville	Sick
Peel, John	Prvt.	31 July	1 year	Lt. Pentecost	Batesville	
Peel, William	Prvt.	31 July	1 year	Lt. Pentecost	Batesville	Sick
Pool, Washington	Prvt.	30 July	1 year	Capt Bean	Batesville	Sick
Palmer, John J.	Prvt.	2 August	1 year	Capt Bean	Batesville	Sick
Price, Jacob	Prvt.	23 August	1 year	Lt. King	Batesville	
Pevyhouse, Nelson	Prvt.	14 August	1 year	Lt. Caldwell	Batesville	

Ryon, John	Prvt.	14 August	1 year	Lt. King	Horsehead	
Russell, Samuel	Prvt.	20 Aug	1 year	Lt. Pentecost	Batesville	Sick
Raney, David I.	Prvt.	15 Aug.	1 year	Lt. King	McClans Bottom	Sick
Ryan, William	Prvt.	14 Aug	1 year	Lt. King	Horsehead	
Stokes, James	Prvt.	14 Aug	1 year	Lt. Pentecost	Batesville	
Shaddon, Lewis	Prvt.	8 th Aug	1 year	Capt Bean	Bateville	
Sawyers, William	Prvt.	16 Aug	1 year	Lt. King	Spada	
Turley, Thomas S.	Prvt.	30 July	1 year	Capt Bean	Batesville	Horse strayed
Tate, William C.	Prvt.	30 July	1 year	Capt Bean	Bateville	
Turney, Isham	Prvt.	2 nd Aug	1 year	Capt Bean	Batesville	
Taylor, Wiley	Prvt.	13 Aug	1 year	Capt Bean	Batesville	Back in A. T.
Vickers, William	Prvt.	25 Aug	1 year	Lt. Pentecost	Batesville	Sick
Wilson, John S.	Prvt.	30 July	1 year	Capt Bean	Batesville	
Wilson, Absolem	Prvt.	2 nd Aug	1 year	Capt Bean	Batesville	
Wilson, Edward	Prvt.	2 Aug	1 year	Capt Bean	Batesville	Sick
Wilson, Daniel	Prvt.	11 Aug	1 year	Capt Bean	Batesville	
Wilson, Joseph	Prvt.	25 Aug	1 year	Lt. Pentecost	Batesville	
Wyotte (Wyatt), Joseph S.	Prvt.	3 rd Aug	1 year	Lt. King	Batesville	
Wilson, William	Prvt.	11 Aug	1 year	Lt. King	Batesville	
Wayland, James	Prvt.	25 Aug	1 year	Lt. Pentecost	Batesville	
Wilborn, Milton	Prvt.	15 Aug	1 year	Lt. King	McClans Bottom	
Young, Harvey K.	Prvt.	21 Aug	1 year	Lt. Pentecost	Batesville	Sick
Zeachra, Burr H.	Prvt.	7 Aug	1 year	Lt. Pentecost	Red River	

TOWNSHIP ELECTION SUPERVISORS FOR SOME ARKANSAS COUNTIES, 1872

Beginning in August of 1872, in the midst of the turbulent period of Arkansas history known as Reconstruction, Federal Judge, Henry C. Caldwell¹ of the eastern district of Arkansas, who was charged with overseeing local elections in Arkansas at that time, appointed two citizens, supposedly one from each political party, in the townships of each county to provide local supervision of elections scheduled for later that year. These election officials were to make sure that no one with close ties to the late Confederate government or who saw service in the Confederate military was allowed to vote. Exceptions were made for those who took an oath to support the U. S. Constitution. For information on the location of Arkansas townships, see Russell P. Baker, *Arkansas Township Atlas, 1819-1930, Revised and Improves Maps (2006)*.

The county lists were published in no particular order in the Little Rock, Arkansas, *Daily Arkansas Gazette* between August 24 and October 2, 1872. The remainder of the township supervisors will be published in future issues of the *Arkansas Family Historian*.

I. Little Rock, Arkansas, *Daily Arkansas Gazette*, August 31, 1872, p. 4, col. 3.

Prairie County

Upper Surrounded Hill Township-John Williams, Isaac Palmer

Lower Surrounded Hill Township-John D. Coffee, John Clark

Rock Roe Township-J. S. Mayberry, Irvin Austin

Stillwell Township-F. M. Belcher, E. V. Davidson

Hamilton Township-W. H. Phelps, Jerry Johnson

Richwoods Township-Robert Eagle, William Reeds

Lonoke Township-John C. Goodrum, C. N. Thompson

Center Township-R. H. Morehead, C. McKinney

Hickory Plains Township- R. H. Reinhardt, William Boyles

White River Township-W. M. Warrer, S. P. Catlin

Wattensas Township-H. O. Williams, John Love.

Sevier County

Jefferson Township-John Leper, J. W. Green

Bear Creek Township-W. C. Herring, Wiley McClure

Madison Township-David Morgan, Hiram Simpson

Blue Bayou Township-N. W. Tate, Alfred Pigness

Saline Township-Jefferson Hill, J. M. Galaher

Washington Township-B. H. Kinsworthy, W. B. Lewis

Red Colony Township- D. B. Coulter, Henry Murphy

Paraliftia Township-W. C. Parks, James F. Bell

Clear Creek Township-B. Norwood, Jr., Zebb Humphries

Monroe Township-John C. Hankins, Collin Williams.

II. Little Rock, Arkansas, *Daily Arkansas Gazette*, August 24, 1872, p. 4, col. 4.

Dallas County

Princeton Township-Dr. William F. Smith, Henry Sells

Holly Springs Township-W. A. Hatlay, P. H. Cable

¹ Fay Hempstead, *A Pictorial History of Arkansas* (1890), p. 805.

Jackson Township-John R. Knight, Baily S. Green
Manchester Township-John W. Cain, R. C. King
Saline Township-John R. Knight, D. B. McCoy
Chester Township-John R. Westbrook William McAlliaster
Smith Township-W. D. Leper, George W. Toone
Owen Township-R. W. Daniel, Porter D. Smith

Bradley County

Clay Township-Rev. B. C. Wier, James L. Phillips
Palestine Township- John E. Hampton, Thomas J. Finkley
Moro Township-L. W. Weeks, Isaac Erwin
Union Township-James Gill, Joseph Scarboro
Ouachita Township-W. J. Edington, R. S. Parker
Eagle Township-John D. Gilli, J. F Hamlet
Redland Township-E. R. Moses, Valentine R. McGehee
Hurricane Township-Thomas G. Harper, F. J. McElhany
Washington Township-Jefferson Single, Stephen Hackman
Pennington Township-Isham Cone, L. B. Ruffin

Woodruff County

White River Township-G. D. Clemens, Alexander Martin
Augusta Township-R. N. Featherstone, A. D. Blachard
Tillman Township-G. W. Mayberry, T. W. Trice
Point Township-J. L. Duncan, Rolfe Eldridge
Deview Township-Andrew Jackson, J. T. Andrews
Cotton Plant Township-William Howard, Wiley Barber
Surround Hill Township-none appointed

Van Buren County

Craig Township-William Hardy, Tobias Hartman
Gregg Township-A. Bradley, John Rogers
Liberty Township-William N. Norman, Leroy Scuggins
Hartzuggs Township-Frank Giles, B. M. Coleman
Panther Bluff Township-Thomas Millsapps, Logan Millsapps
Little River Township-John F. Finch, William Carter
Giles Township-John W. Tumer, Joland F. Kinsey
Valley Township-William Thompson, Job Inman
Cadron Township-Madison W. Brown, George W. Tramick
Davis Township- -----Fulkerson, John J. Martin
Washington Township-Brogil (?) Thomas, Thomas Andrews
Sugar Loaf Township-Samuel C. Davis, John D. Boghard
Union Township-James M. Caldwell, Seward Gee
Holly Township-William J. Pate, William Holly

Turkey Creek Township-John Gilham, George Hoy

Piney Township- none appointed

Mountain Township-none appointed

California Township-none appointed

Peter Creek Township-none appointed

III. Little Rock, Arkansas, *Daily Arkansas Gazette*, August 27, 1872, p. 4, col. 4.

Crawford County

Van Buren Township-W. M. Northcutt, Ezekiel Cox

Sheppard Township-George W. Peters, William Quick

Jasper Township-Joseph Mattock, James Bryan

Richland Township-R. P. Renfrow, C. L. Wright

Mountain Township-James C. Wright, H. C. Brown

Upper Township-Jacob Wotleredge, John Braford

Cedar Creek Township-R. N. L. Loud, Martin Nilson

Deer Creek Township-J. E. Salder, John Mills

Vine Prairie Township-Wesley Henson, E. B. Christian,

Lafayette Township-J. F. Winfrey, Pleasant Blevins

Scott County

Hickman Township-James B. Morris, Freeman Malone

Parks Township-T. C. Gaines, J. C. Halm

La Fave Township-J. T. Kelley, T. H. Jones

Mountain Township-William N. Dosley (?), Abraham Laneford

Blancett Township- N. W. C. Hudgins, Solomon Moore

Black Fork Township-J. W. Brown, W. B. Hulsey

Brawley Township-C. M. Vise, Copper Hayso

Lafayette Township-Blackburn Bird, Elisha Brown

Hunt Township-Joseph Jackson, Thomas W. Tate

Tomlinson Township-L. F. Fuller, James Newberry

Tate Township-Sam. Pennington, Sparks Doyle

Dickson Township-William Henley, H. Hodges

Mill Creek Township-M. S. Bradburn, William W. Welch

Clayton Township-Jesse James, James B. Hensley

IV. Little Rock, Arkansas, *Daily Arkansas Gazette*, August 28, 1872, p. 4, col. 4.

Jefferson County

Richland Township-Milton M. Garrettson, Richard Harris

Boone Township-Richard C. Triplett, George Harris

Plum Bayou Township-William A. Bond, John Archibald

Dunnington Township-N. Terry Roberts, Stephen Washington

Dudley Lake Township-John W. Tucker, Alex. D. East

Bolivar Township-James Sutherland, T. A. Wallace

Milton Township-Dr. J. F. Simmons. Joseph Platts

Victoria Township-J. Barton Trulock, Taylor Colson
Whiteville Township-George L. Blackwell, Henry Colson
White Oak Township-William H. Wilson, Robert Bell
Spring Township-Arch. Niven, Thomas Dunnington
Washington Township-John N. Rogers, C. R. Anderson
Barraque Township-James H. Majors, Samuel T. Lee
Vaugine Township-James M. Gray, M. W. Martin.

Clark County

Manchester Township-R. L. Duff, Washington Fort
Anderson Township-T. J. Allison, Berry Ulferd
Beech Creek Township-R. S. Tate, William McLelland
Elkins Township-T. A. Chappell, Frank Hughes
Terre Noir Township-W. J. Meeks, Robert Meadows
Greenville Township-John Thomas W. W. Cassleburry
Antoine Township-Milton East, Green Cross
Coldbath Township-J. E. Clingman, S. P. Baker
Alpine Township-J. F. Briggs, H. C. McCarrell
Point Cedar Township-W. C. Jones, B. L. Bridges
Caddo Township-Alfred G. Home, Charles W. Tankersley
South Fork Township-William Parley, Washington Skinner.

Pulaski County

City of Little Rock

First Ward-F. A. Sarasin, J. V. Hodge
Second Ward-George W. Dodge, James F. Wolfe
Third Ward-Thomas C. Peak, James M. Vance
Fourth Ward-M. W. Benjamin, H. T. Gibbs.

[Rural Townships]

Big Rock Township-Frank T. Vaughan, Benjamin Thomas
Big Rock Township, Badgett Precinct-William Richards, Peter Brugiman (?)
Prairie Township-Moses Swain (?), Henry Branch
Owen Township-W. W. Prather, John Thomas
Maumelle Township-W. C. Kennedy (?), James Bailey
Fourche Township-George W. Brown, H. James
Union Township-W. W. Mitchell, Langater Johnson
Bayou Meto Township-P. G. Mayson (?), John Green
Clear Lake Township-W. W. Morris, Henry Womack
Richwoods Township-William Pelton (?), Mac Pyburn
Gray Township-John Vaughan, Bryant Welch
Mineral Township-John Je (?), John Norton
Plant Township-John Dunoway (?), John Medlock
Pyeatt Township-William D. Anthony, Jackson Smith
Eastman Township-Josiah M. Giles, George Robinson
Ashley Township-Calvin C. Pennington, George Cagle
Eagle Township-Thomas J. Scott, Frank Crump
Campbell Township-J. E. Isbell, Thomas Perkins

Caroline Township-W. C. Mitchell, W. F. Blackwood
V. Little Rock, Arkansas, *Daily Arkansas Gazette*, August 29, 1872, p. 4, col. 5.

St. Francis County

Frank Township-W. S. Stewart, William G. Fuller
Telico Township-J. H. Cobb, John A. Gallon
Johnson Township-F. G. Matthews, G. R. Brown
L'Anguille Township-John Faulkerson, Hugh Mathews
Texas Township-West Harris, J. J. Thompson
Prairie Township-J. D. Loone, John Stutts
Union Township-J. E. Richards, John Jones
Liberty Township-Esquire Newman
St. Francis Township-S. C. Wood, R. W. Dunn
Black Fish Township-John R. Davis, J. J. Cunningham
Grigg Township-Jesse Hall, O. J. Nole

Yell County

Chichalah Township-James Barnett, J. G. Dyer
Mountain Township-Simeon Suggs, Oliver Ellis
Ward Township-J. U. Harkey, Robert U. Hight
Lower Lefevre Township-John L. Morgan, Renel Williams
Upper Lefevre Township-George A. Morgan, Dr. J. N. McCall
Magazine Township-W. T. George, Benjamin Thomas
Galley Rock Township-Robert Williams, William B. LeMoyné
Delaware Township-J. J. Littleton, William K. Shinn
Rover Township-William H. Kirkes (?), Thomas James
Dardanelle Township-Thomas J. Bass (?), William M. Boles
Riley Township-William E. Cook, Robert Underwood
Spring Creek Township-Alexander N. Ross, V. P. Caffery
Dutch Creek Township-William N. Howe, Miles H. Partin
Crawford Township-Joseph Reed, William Cox

vi. Little Rock, Arkansas, *Daily Arkansas Gazette*, September 3, 1872, p. 4, col. 3.

Columbia County

Clay Township-John B. Cunningham, James R. McKinney
Moss Township-Hudson Butler, A. Blake
Hadley Township-Jesse D. Proctor, John Landis
Warren Township-R. C. Warren, Charles Walker
Mississippi Township-O. H. P. Caldwell, John Hill
Magnolia Township-W. M. Joiner, S. B. Dumas
Carnie Township-J. A. McCall, David Hendricks
Buena Vista Township-John Colquit (?), Samuel Torracs
Calhoun Township-John H. Baker Jr., A. A. Goodie.

ARKANSAS GENEALOGICAL QUERIES

AGS members are welcome to submit as many free Arkansas genealogical queries for publication in this quarterly as they wish during the year. The queries will appear in the order in which they are received. Each should relate to an Arkansas family or location. Be sure to mention the county or region of Arkansas where the family lived, as well as full names and dates. In addition, submitters must include contact information and email address, if possible. Follow the format used below. Mail your queries to AGS at P. O. Box 26374, Little Rock, Arkansas 72221-6374. *Please print clearly.*

GROTTEN-SHILLING-Seeking information on these early Arkansas black families, Rev. Albert G. Grotten of Faulkner County and the Shilling Family of Texarkana, Arkansas, during the 1860s and 1870s. *Ms. Marion T. Hill, P. O. Box 53260, Chicago, Illinois 60653-0260, marion.hill0360@sbcglobal.net.*

FOLEY-REYNOLDS-DUNNAWAY-Seeking additional information on John Franklin Foley, a saloon owner, who lived in Arkansas City, Desha County, Arkansas, in 1880. His wife was Sarah Jane Reynolds. That year he purchased property from S. H. Dunnaway. Foley seems to have died by 1882. *Cindy Jo Davis, 37 Susanne Court, Caseyville, Illinois 62232, cindyjo12@charter.net.*

LENDERMAN-BURNS FAMILY-Seeking information on Josephus L. Lenderman, b. Aug. 7, 1874, Panola County, Mississippi, d. May 23, 1942 in Lonoke County, Arkansas, as well as, Amanda Emma Burns, b. April 1, 1873, Lonoke County, Arkansas, d. April 8, 1921, in Lonoke County, Arkansas, and Ollie Josephine Lenderman, b. January 15, 1917, in Lonoke County, Arkansas, d. May 15, 1996, in Pulaski County, Arkansas. *Tammy Dwan Keck Ballou, 3925 Stormy Brook, Schertz, Texas 78154.*

CROSS COUNTY, ARKANSAS-Seeking to purchase a copy of the *Cross County, Arkansas, Cemetery Records, Vol. I*, published several years ago by the Cross County History and Genealogical Society. *Patsy S. Hooper, 2153 LaSalle Ave., Gretna, Louisiana 70056-4514.*

STORY-PAYNE-Would like to hire someone to help me to find additional information on my great-grandmother, Georgia Ann Story, b. December 29, 1850, in Arkansas, married James Knox Payne on January 17, 1872, in Grayson County, Texas. She died December 30, 1926, in Jasper, Missouri. She may have a connection to the Shipp and Scroggins families. Please help. *Carol Katsenmeyer, 2667 Ester Lane, Grants Pass, Oregon 97527.*

ARKANSAS ANCESTRY CERTIFICATES

Our ever popular *AGS Certificates of Arkansas Ancestry* are still available to all qualified readers. Membership in AGS is not required. Everyone with early Arkansas roots is encouraged to apply. Visit our website at <http://www.agsgenealogy.org/ancestrycert/default.html> for instructions, fees, and downloadable application forms. Follow the directions on the forms. Email AskAGS@agsgenealogy.org with your questions. For best results submit no more than three forms at a time.

Certificates are available for the following categories:

- *Colonial*--For an ancestor who resided in Arkansas prior to January 1, 1804.
- *Territorial*--For an ancestor who resided in Arkansas prior to June 15, 1836.
- *Antebellum*--For an ancestor who resided in Arkansas prior to May 6, 1861.
- *Civil War Ancestry*--For an ancestor who served in a Confederate or Union Arkansas unit between 1861 and 1865, or applied for an Arkansas Confederate pension, or whose widow

applied for a pension, or a Union soldier or soldier's widow who applied for a U.S. pension while living in Arkansas.

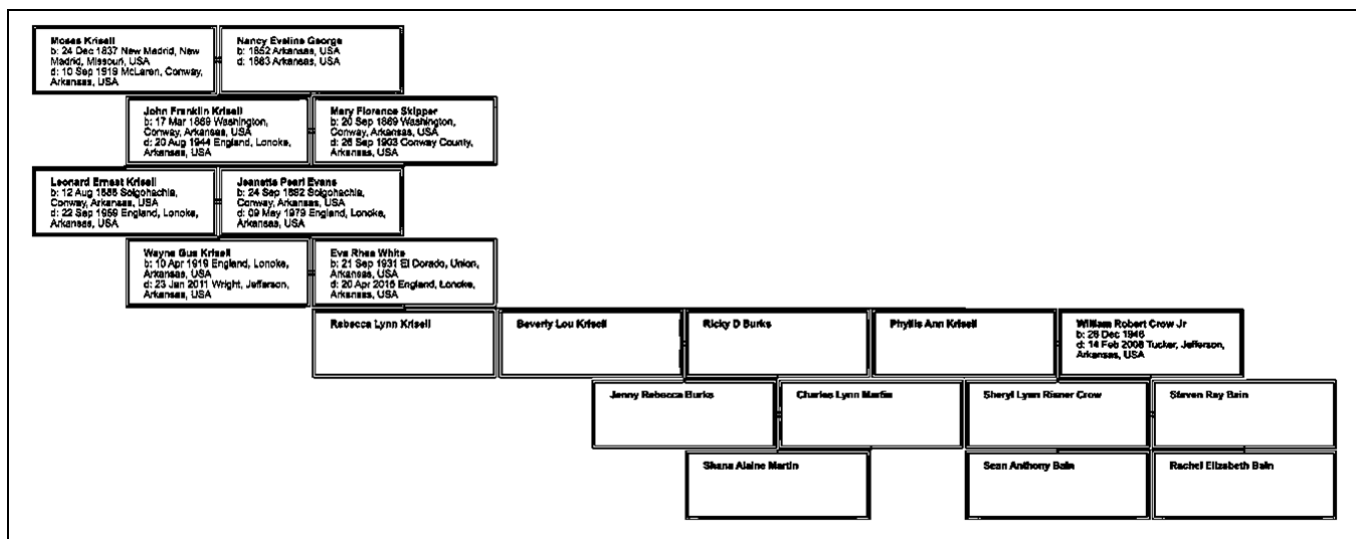
- *Nineteenth Century*--For an ancestor who resided in Arkansas prior to December 31, 1900.

Arkansas Civil War Ancestry Certificates

for Rachel Elizabeth Bain, Sean Anthony Bain, Shana Elaine Martin Page,
and Rebecca Lynn Krisell Lowe

*Submitted by Sonja J Krisell
PO Box 179, Wright, AR 72182
501-285-2241, family@krisell.com*

Rachel Elizabeth Bain, Sean Anthony Bain, Shana Elaine Martin Page, and Rebecca Lynn Krisell Lowe received Certificates of Arkansas Ancestry for the Civil War period based on documentation submitted for the following lineage. Their Civil War ancestor was Moses Krisell, who served in an Arkansas Confederate and Union unit during the American Civil War 1861–1865 or was a veteran who received a Civil War pension (Union) while living in the State of Arkansas.



BOOKS AND PUBLICATION REVIEWS

The Arkansas Genealogical Society welcomes opportunities to review new and reprinted books, pamphlets, and other publications relating to genealogy, family history, local and community history, especially those concerning Arkansas and southern locations, families, and events. Send review copies to AGS at P. O. Box 26374, Little Rock, Arkansas 72221-6374. Be sure to include complete pricing and ordering information with each item. After review, volumes will be passed along to the Arkansas State Archives in Little Rock or other suitable institutions.

Sherryl Miller, *Images and Stories from England, Arkansas, 1900-2002, from the Archives of the Lonoke County Museum* (2019), soft cover, 78+ pages, photographs, clippings, historical articles, and a full index. England, Arkansas, with a population of some 2,800, is located in the southeastern corner of Lonoke County. From a picture of the “Cool Cats Inn” to a discussion of the effects of the great 1927 flood, this slim but well-presented volume chronicles the rich history of this mainly agricultural community. With this work, Ms. Miller, the director of the Lonoke County Museum, makes an important contribution to the often-neglected history of small-town Arkansas. It was published as a fundraiser for the museum. For price and additional information email the museum at lonokecomuseum@yahoo.com. The book may be ordered from the Lonoke County Museum, P. O. Box 873, 215 SE Front St., Lonoke, Arkansas 72086, 501-676-6750.

The following volumes may be ordered from Clearfield Company, Baltimore, Maryland www.generalogical.com. Check out the company’s website for price and ordering information.

Jack Darrell Crowder, *Strange, Amazing, and Funny Events that Happened during the Revolutionary War* (2019), bibliography, many illustrations, and index. The author has produced another is his easy to read and entertaining series of short volumes on the history of the American Revolution. This is not just another reiteration of the events of this formative period in our history. The author has brought together tidbits and tales as well as many little-known facts, anecdotes, and funny accounts that illustrates the human character of those who took part in this early American drama. Where else will one discover that James Miller, a sixty-six-year-old patriot, when told during a battle in 1775 to pull back from the advancing British, said, “*I’m too old to run.*” Afterwards he was found dead having been shot thirteen times. Many historians may not realize that Daniel F. Bakeman who died in 1869 was the last surviving veteran of the Revolution, who did not receive a pension for his service until 1867. When Rev. John N. Martin a Charleston, South Carolina, pastor, was ordered by the British to pray for the English king, he refused and his church was shelled, his property was confiscated, and then he was banned from the city. Family historians should note the amount of information the author was able to glean from military records, pension applications, and battlefield reminiscences. A very enjoyable and informative read. (See the Spring 2019 issue of the *AFH* for reviews of two other volumes in this series.)

David Dobson, *Scottish Trade with Colonial Charleston, 1683-1783* (2018), soft cover, introduction, bibliography, footnotes, five appendices, and 369 pages. During the seventeenth century, as many as seven thousand emigrants from Scotland settled in the New World. At the same time, many Scots merchants and traders established commercial ties with Britain’s colonies in North America. This work chronicles these trade ties with Charleston, South Carolina, in considerable detail. Using Scottish, British, and especially Charleston sources, the author discusses both the importation of goods and people into South Carolina and the exports that passed through this southern city’s port. Of special interest are the names of hundreds of Scotsmen, who either lived in Charleston before the American Revolution or had commercial ties with the city. Five appendices contain many additional names. The work is an excellent example of using non-traditional historical records for genealogical research.

INDEX

- Abney
James F., 30
- Adair
J. L., 29
- Adams
D. M., 15
R. R., 25
Susan M., 24
- Addock
W., 15
- Aikin
Edward, 16
John, 16
John Mrs., 16
Trent C. Dr., 31
William, 16
- Akin
Eli V., 32
- Albright
James, 11
M. N., 11
Mary, 11
- Allen
Washington, 32
Westly, 32
- Alley
P., 15
- Allison
T. J., 39
- Allsop
Laura J., 9
- Alsop
Laura, 7
- Alston
James, 32
- Altmon
Amy, 12
Daniel, 12
Daniel H., 12
Isiak, 12
James, 10
Jane, 10
Jasper N., 10
Jesse, 12
- John, 12
Joseph W., 12
Julia, 12
Mary, 12
Wiley J., 12
Ziepha, 12
- Altshul
Sol, 27
- Ambo
Baptist, 28
- Anderson
C. R., 39
L. K., 15
- Andrews
J. T., 37
Thomas, 38
- Anger
John, 28
- Anthony
William D., 40
- Archer
Andrew B., 32
G. B., 30
- Archibald
John, 38
- Ashing
J., 15
- Austin
Irvin, 36
J. P., 29
- Bagwell
Adaline, 11
Jordan, 11
Maling, 11
Mary, 11
- Bailey
James, 39
W. A., 17
- Bain
Rachel E., 42
Sean A., 42
- Baird
Benjamin H., 32
- Bakeman
Daniel F., 43
- Baker
John H., 41
R. A., 14
Russell P., 4, 9,
30, 36
S. P., 39
- Balem
David, 12
John, 12
Melia, 12
Rebecca, 12
- Baling
O. P., 25
- Ballou
Tammy D., 41
- Baptist
John, 28
- Barber
Wiley, 37
- Barker
Martha, 11
Samuel, 11
- Barkman
Bessie, 8
Daniel, 8
Harley, 8
Jack, 7
Vick, 8
Vince, 7
- Barnett
James, 20, 40
Rebecca, 20
Robert, 20
- Barnwell
M. W., 29
- Barr
James, 32
- Bartelimew
Joseph, 28
- Barton
W., 15
- Bass
Thomas J., 40
- Bayes
family, 22
- Bayles
Caleb, 32
- Beall
Anna R., 24
- Bean
Isaac, 31
Jane, 31
Jesse, 31
Jesse Capt., 30
Nancy, 30
Robert, 30
- Beason
J., 14
- Beeley
Asa, 30
- Belcher
F. M., 36
- Bell
James F., 37
Lula, 7
Robert, 39
- Bellah
John W., 6
- Benjamin
M. W., 39
- Bennett
James H., 32
Lucinda E., 6
- Benton
M. B., 11
Sarah E., 11
W. H., 11
- Billah
John W., 8
- Billette
Pierre, 28
- Bird
A. G., 30
Blackburn, 38
Ed, 17
M. E., 29
- Blachard

A. D., 37	Booth	J., 15	George, 40
Black	G. W., 30	Brown	Cain
Capt., 27	Boran	C. B., 29	Ellen, 5
O. H. P., 27	Walker, 28	Christopher, 26	John W., 37
O. H. P., Capt.,	Bostick	Elisha, 38	Caldwell
26, 27	family, 22	G. R., 40	Abiram, 32
Blackwell	Boyakin	George W., 39	George, 31
F., 16	John B., 17	H. C., 38	Henry, 12
George L., 39	Boyd	J. W., 38	Henry C., 36
Blackwood	J. W., 15	James M., 27	Jacob, 13
W. F., 40	R., 15	Madison, 38	James, 13, 32
Blake	Boyles	William, 26	James M., 38
A., 40	William, 36	Bruce	Jane, 13
David, 11	Bradburn	R. W., 6	Mary J., 12
Sarah, 11	M. S., 38	Robert W., 5	Nancy, 13
Blaylock	Bradley	Brugiman	O. H. P., 29, 40
H. W., 15	A., 37	Peter, 39	William, 12
J. E., 15	Braford	Bryan	Campbell
W., 15	John, 38	James, 38	Samuel, 30
Blunt	Branch	Bryant	Canatser
T. E., 14	Henry, 39	J. H., 17	D. A., 14
Blusk	Branner	J. L., 16	Cannon
H., 14	Mrs., 17	Mr., 17	J., 15
Boardway	Bridges	Bull	Cargles
James, 11	B. L., 39	Jacob A., 26	J., 14
Job, 11	Briggs	Burk	Carlock
Martha, 11	J. F., 39	John, 29	C., 29
Sarah, 11	Bright	Burnell	Carpenter
Sarah J., 11	Sophonra, 7, 9	Louisa J., 9	W. J., 17
William, 11	Broadaway	Burnett	Carson
William H., 11	Andrew, 11	John B., 17	C. M., 17
Boghard	Columbus, 11	Louisa, 7	C. W., 17
John D., 38	George W., 11	Mrs., 17	Carter
Boles	J. W., 13	Burns	Clarence E., 31
William M., 40	Jesse C., 11	Amanda E., 41	William, 37
Bolger	John C., 11	Butler	William T., 25
A. A., 30	Marcus, 11	Columbus, 8	Cary
G. W., 29	Mary J., 11	Hudson, 40	family, 22
H. M., 29	William R., 11	Lily, 8	Casslebury
H. P., 30	Winfield, 11	Mary, 8	W. W., 39
Bolien	Y., 13	Matthew, 13	Catlin
Esabella, 11	Brooks	Tennessee, 13	S. P., 36
Elizabeth, 11	Georgiana, 7, 8	Zac, 26	Cato
William, 11	Louisa J., 6, 8	Cable	Johnaon, 15
Bond	Brounts	P. H., 36	Cerry
William A., 38	Joshua, 32	Caffery	T. J., 14
Bonne	Browder	V. P., 40	Chambers
Joseph, 28	Isham, 22	Cagle	T. G., 26
Michael, 28	Browsers		Chappell

T. A., 39	Colquit	Ezekiel, 38	Flavius J., 12
Childers	John, 41	William, 40	Frances, 12
Alexander C., 32	Colson	Coyne	George W., 12
Christian	Henry, 39	Ellen, 5	H. M., 29
Ann, 22	Taylor, 39	Crayton	J. P., 15
E. B., 38	Colvert	Samuel, 29	James, 12
family, 22	Wm., 26	Crocket	John R., 40
Thomas Jr., 22	Compton	J. W., 15	Johnathan, 12
Clark	John B., 32	Cross	Johnson, 32
John, 36	Cone	Green, 39	Lateria, 11
Clemens	Isham, 37	P. M., 29	Murming, 12
G. D., 37	Conway	Crowder	S. F., 15
Clement	James, 22	Jack, 43	Samuel C., 38
B. T., 25	Conwell	Crump	Thomas M., 12
Clements	Mr., 17	Frank, 40	William, 11
Jeremiah C., 32	Cook	Cunningham	Dechasin
Clingman	Henry, 12, 13	J. J., 40	Antoine, 28
J. E., 39	Jacob, 12	Cunningham	Demos
Cloud	James, 13	John B., 40	Howel, 27
James M., 6	Jeamah, 13	Curtner	Dennis
Cobb	John T., 13	Elizabeth, 10	Dinton, 30
J. H., 40	Malinda, 13	Jacob, 10	John, 32
Coffee	Mary, 13	Jesse A., 10	Dersey
John D., 36	Matilda, 12	Louisa, 10	B., 15
Cole	Nancy, 13	Martha, 10	Dickenson
Ann A., 5	Neely, 13	Stephen, 10	T., 15
Augusta, 5	Samuel, 13	Wils, 10	Dickerson
Coleman	Susan, 12	Cypert	J., 15
B. M., 37	William, 13	Mary E., 9	J. W., 15
Daniel, 21	William E., 40	Prudence, 9	Dickinson
Dee, 21	Cornett	Dalton	James, 26
Dewitt, 21	John, 26	H. C., 29	Dickson
Elizabeth C., 21	Corzine	Damm	G. L., 29
Emily R., 21	L. J., 16	Alice E., 6	Mr., 17
James, 22	Cotton	Daniel	Dillard
James S., 21	J., 16	R. W., 37	John, 32
John S., 21	Coulter	Darten	Dingler
Robert, 20, 21	D. B., 37	Hezekiah, 32	W. T., 25
Robert P., 21	Council	David	Dobson
Robert S., 19, 20,	M. L., 15	Abnor, 32	David, 43
22	Coussotte	Davidson	Dodd
S. B., 21	Caddy, 28	E. V., 36	Michael, 6, 9
Samuel, 22	Frances, 28	Ephraim C., 28	Dodge
Tilman, 19	Pierre, 28	Davis	George W., 39
William S., 21	Covert	Benjamin F., 11	Henry Maj., 31
Collett	L. R., 14	Caroline, 11, 12	Dodson
Thomas, 28	Cowart	Cicero, 29	J. W., 29
Collins	W. C., 25	Cindy J., 41	Dosley
William, 28	Cox	Emely W., 12	William N., 38

Douglas	Eldridge	R. N., 37	James, 12
F. A., 25	Rolfe, 37	Fike	Jane, 12
Doyle	Elle	Nelson, 26	Malissa, 12
Sparks, 38	G., 27	Finch	Ganaway
Dozier	L., 27	John F., 37	Emline, 10
Ann, 18	Elledge	Finkley	Sarah, 10
Drake	J. B., 29	Thomas J., 37	William, 10
J. A., 30	Elliot	Flaming	Garner
Dudley	John, 29	H. B., 29	John C., 33
William, 32	Elliott	Flanray	Garrett
Duff	J. W., 17	W. C., 26	N. J., 29
R. L., 39	Lavisa, 7	Fletcher	Garrettson
Duggan	Ellis	Mr., 17	Milton M., 38
W. D., 25	Nancy, 7	Florence	Garrison
Dumas	Nancy J., 9	Joseph, 25	D. G., 30
S. B., 40	Oliver, 40	Flowers	W., 15
Duncan	Elmore	R. S., 30	Garrott
J. L., 37	P. T., 29	Floyd	J. P., 19
Dunigan	Elms	A. J., 26	Gates
Jack, 17	David M., 33	Foley	James, 30
Dunlap	Garrett, 32	James, 30	Gee
C. R., 25	James, 31	John F., 41	Seward, 38
M. J., 25	Embry	Foster	George
Dunn	Moses, 28	W. H., 17	Nancy E., 42
R. W., 40	England	Fowler	W. T., 40
Dunnaway	John, 32	William T., 12	Gibbs
S. H., 41	Erwins	Franklin	H. T., 39
Dunnington	S., 15	Anthony, 6, 9	Gibson
Thomas, 39	Erwin	J. H., 30	Amanda, 12
Dunoway	Annanias, 31	W. A., 29	Asbery, 12
John, 40	Isaac, 37	W. B., 30	James, 11
Dussy	Evans	Freeman	Jane, 12
David, 32	Jeanette P., 42	John, 5, 29	John, 11, 12
Dyer	Martha, 7	Fulbright	Mary, 11
J. G., 40	Evins	William, 33	Nancy, 12
Eagle	E., 15	Fulkerson	Robert A., 31
Robert, 36	Ezell	Mr., 38	Thomas C., 12
Earnest	Jenny F., 7	Fuller	William, 12
Robert B., 26, 27	Farmer	L. F., 38	Giles
East	Charles, 11	William G., 40	Frank, 37
Alex. D., 38	Elizabeth, 11	Gailey	Josiah, 40
Milton, 39	Mary, 11	Andy, 12	Gilham
Echols	Farrier	Nancy, 12	Hoy, 38
Judson O., 26	John M., 26	Gaines	John, 38
Edington	Farrior	T. C., 38	Gilkey
W. J., 37	John M., 27	Galagher	James M., 13
Edwards	Faulkerson	J. M., 36	Gill
L., 15	John, 40	Gamlle	Addison, 33
Mrs., 26, 27	Featherstone	George, 12	James, 37

Gilli	James, 11	Hardy	Herald
John D., 37	James A., 11	William, 37	John, 14
Glanton	Rebecca, 11	Hargrove	Herndon
John, 30	William, 11	James, 10	Dallas T., 3
Glover	Guest	Susan, 10	Herring
H., 15	David A., 12	Harkey	W. C., 36
Godbold	William, 12	J. U., 40	Hicks
B. F., 30	Guist	Harper	Jane, 6, 8
Goodie	Isaac, 33	Thomas G., 37	Higginbottom
A. A., 41	Guran	Harrell	Thomas, 28
Goodman	W. W., 29	Bennett, 26	Hight
H. W., 29	Hackman	Harris	Robert U., 40
Goodrum	Stephen, 37	George, 38	Hightower
John C., 36	Hail	H. B., 29	James A., 29
Gray	E., 15	Richard, 38	Hill
James M., 39	Hale	W. S., 26	Amand E., 5
Greathouse	John, 25	West, 40	B. A., 15
Gabriel, 27	Hall	Hartman	Fannie, 8
Green	Hester J., 20	Tobias, 37	George, 26
Anna C., 8	Jesse, 40	Hatlay	Jefferson, 36
Baily S., 37	Mary T., 19	W. A., 36	L. D., 15
J. W., 36	Halm	Hauck	Marion T., 41
John, 39	J. C., 38	J. L. Rev., 4	Mrs., 17
Gregston	Hambleton	Hays	Hobbs
James A., 12	Estelle, 19	B. V., 30	S. M., 16
Rachael, 12	Murray, 19	Copper, 38	Hodges
Griffin	Hamlet	Heard	H., 38
William H., 6	J. F., 37	Catherine I., 13	Hoffman
Griffs	Hammock	David W., 13	D. P., 27
Mays, 33	J. L., 29	Mary, 13	Hogan
Griggs	Hammon	Thomas A., 13	John W., 33
Samuel, 33	James M., 33	Helms	R., 14
Grizzell	Hammond	William, 14	Holly
family, 22	Henry, 17	Henderson	William, 38
Grogan	John, 33	Samuel, 22	Holt
Elizabeth W., 21	R., 17	William, 22	G. M., 30
Jonathan D., 20	Hampton	Hendon	Mr., 17
Mary, 20	John E., 37	W. T., 25	Home
William C., 20	Hanah	Hendricks	Alfred G., 39
Grooms	Lewis, 10	David, 40	Hooper
James, 13	Martha, 10	James, 13	Patsy S., 41
Sarah, 13	Mary, 10	Louisa, 13	Hopkins
Thomas, 13	Samuel, 10	Henley	George, 17
William, 13	Hankins	William, 38	Houck
Grotten	John C., 37	Hensley, James B.,	J. L. Rev., 4
Albert G. Rev., 41	Hanks	38	Howard
Guess	Bill, 19	Henson	William, 37
C. W., 16	Hanna	Wesley, 38	Howe
David, 11	John, 26		William N., 40

Howel	Andrew, 30, 37	I. T., 26	John, 40
Catherine, 11	James, 17	Kennedy	Landrum
Elizabeth, 11	Joseph, 38	W. C., 39	Mr., 17
Francis, 11	Jacobs	Kenner	Lane
James H., 11	Mr., 17	J. M., 29	W. L., 15
Mary, 11	James	Killgore	Laneford
Mary E., 11	H., 39	J. D., 17	Abraham, 38
Phillip H., 11	Jesse, 38	King	Langley
William, 11	Jarman	Drewry, 33	Miles L. Rev., 13
Howell	Trussie, 13	J., 16	Larimore
Harvey B., 6, 33	Jean	John, 28	R. C., 15
Hoyle	W. L., 29	R. C., 37	Lartion
W. F., 15	Johns	Robert, 31	Augustus, 28
Hudgins	Joseph, 26	Kinsey	Lawless
N. W., 38	Johnson	Joland F., 37	G. W., 25
Huggins	Etta L., 19	Kinsworthy	J. H., 25
J. M., 16	J. T. Mrs., 19	B. H., 36	Lawrence
Hughes	Jerry, 36	Kirby	S., 15
Frank, 39	Langater, 39	Mary, 7	Leake
Huit	Marbra, 33	Mary E., 9	Elizabeth, 22
W., 15	Moses, 26	Kirkes	family, 22
Hull	R. W., 30	William H., 40	John, 22
S., 15	S. J., 29	Kister	Walter, 22
Hulsey	Samuel, 33	John, 33	Lee
W. B., 38	Johnston	Klein	John, 34
William B., 33	Mr., 17	Mr., 17	Samuel T., 39
Humphries	Joiner	Klosh	LeMoyne
Zebb, 37	W. M., 40	Paul B., 8	William B., 40
Hunt	Jones	Knight	Lenderman
N. M., 26	A., 15	John R., 37	Josephus L., 41
Hunter	J. C., 30	Mr., 17	Ollie J., 41
Edward, 22	John, 40	Krisell	Leper
Hurmun	Mary, 7	John F., 42	John, 36
R. L., 15	Mrs., 17	Leonard E., 42	W. D., 37
Hyde	T. H., 38	Moses, 42	Lewis
Ezekiel, 33	W. C., 39	Sonja J., 42	W. B., 36
Hyles	W. H., 17	Wayne G., 42	Linthacum
David, 33	W. R., 15	Krisell-Lowe	W. A., 15
Inman	William J., 30	Rebecca L., 42	Litchfield
Job, 38	Katsenmeyer	Kurkendall	Samuel, 33
Isbell	Carol, 41	Benjamin, 28	Litrill
J. E., 39	Kavanaugh	Labass	W., 14
Isley	John, 33	John, 33	Little
J., 15	Kellett	Lafave	Dixey, 13
Ivey	William, 33	Ambrose, 28	Jane, 13
George, 28	Kelley	Lamb	William, 13
Ivy	J., 15	Lavender, 9	Littleton
Thomas G., 33	J. T., 38	Levator, 6	J. J., 40
Jackson	Kendrick	Landis	Locke

Francis M., 8	Josephine, 6	J. N. Dr., 40	R., 15
Frank M., 6	Julia, 7	McCargo	W. C., 15
Loeb	Sarah M., 8	Jonathan, 13	McKinney
Mr., 17	Manning	Radford, 13	C., 36
Logan	William, 6	McCarrell	J. A., 15
Andy, 12	Manson	H. C., 39	James R., 40
Bennett T., 34	William, 34	McClenden	W. B., 15
Jane, 12	Marberry	Willis, 34	McKinny
Mary J, 12	Cordelia R., 13	McCloud	Clark S., 34
Massa, 33	Leonard W., 13	Neill A., 34	McLaughlin
Lollar	Markam	McClure	Martha, 6
Richard, 29	Thomas Jr., 34	Wiley, 36	McLelland
Loone	Thomas Sr., 34	McColloch	William, 39
J. D., 40	Martin	Joseph B., 27	McLemore
Loud	Alexander, 37	McCoy	A., 26
R. N., 38	James, 34	D. B., 37	McMillan
Love	John H. Rev., 43	McCracken	Mary H., 8
John, 36	John J., 38	Elizabeth, 11	McMillen
Lunderdail	M. W., 39	George, 11	D. D. C., 29
J. A., 14	Martin-Page	Jane, 11	R. C., 30
Lytle	Shana A., 42	Willis, 11	Susan, 4
J. F., 17	Mask	McCrae	McMurry
Machen	family, 22	P., 17	J. C., 14
F. L., 30	Judith, 22	McCubbin	W. H., 14
Lee, 29	Mason	M., 15	McNaire
Mack	Alexander, 27	McCuiston	E., Col., 27
A. T., 17	Ambrose, 28	Robert, 21	McPherson
Majors	Mathews	McCullough	J. L., 14
James H., 39	Hugh, 40	James J., 6	L., 14
Malone	Mary J., 6	McCully	Meacham
Freeman, 38	Matthews	Antonia W., 22	Christopher, 34
Maner	F. G., 40	DeKalb W., 22	James A., 34
A. J., 27	Mattison	James R., 24	Meadows
Mangrum	B. J., 29	Susan M., 24	Robert, 39
A. F., 11	Mattock	William M., 22	Means
Cezar, 11	Joseph, 38	McDaniel	A. N., 26
Edward, 11	Mayberry	B., 29	J. H., 27
Frances, 11	G. W., 37	McDonald	John H., 26
Isaac, 11	J. S., 36	W. J., 17	Joseph H., 26, 27
Jacob, 11	Mayson	McEachern	Medlock
James, 11	P. G., 39	J. A., 30	John, 40
Morzane, 11	McAlliaster	McElhany	Meeks
Susan, 11	William, 37	E., 7	W. J., 39
Tiletha, 11	McCaghren	F. J., 37	Melton
Wiley, 11	W. G., 30	McEnhern	S., 15
Zedick, 11	McCain	W. N., 29	Mercar
Manley	James, 22	McGehee	James, 29
Julia A., 9	McCall	Valentine R., 37	Meriwether
Manly	J. A., 40	McIlery	W. H., 17

Merso	Morris	Martin, 38	Parks
J. A., 15	James B., 38	Nipper	W. C., 37
Miller	W. W., 39	Solomon, 34	Parley
J. S., 29	Morrison	Niven	William, 39
James, 43	Furgus S., 31	Arch, 39	Partin
John Col., 30	Morrow	Nixon	Miles H., 40
Lorena E., 7, 8	G. M., 30	Benjamin, 28	Paschal
Sherryl, 43	Moses	Nole	James, 29
Mills	E. R., 37	O. J., 40	Paslay
John, 38	Muimad	Norman	Alma G., 19
Millsapps	P., 15	William N., 37	Aloma G., 18
Logan, 37	Murph	Northcutt	Ann C., 19
Thomas, 37	F. L., 26	W. M., 38	C. H., 19
Mires	Murphy	Norton	Estelle, 18, 19
Nathan, 28	Henry, 37	E. M., 30	Etta L., 18
Mitchel	Mark, 34	John, 40	Fannie I., 18, 19
G. W., 15	Murry	Norwood	Francis C., 18
H. W., 25	E., 15	B., 37	Geraldine, 19
J. C., 25	Myars	O'Neal	H. W., 19
Mitchell	J. C., 15	S. G., 25	Harvey, 18
Andrew, 5	Nance	S. J., 25	J. C., 18
Andrew J., 5	J. A., 30	Obar	John, 18
E., 15	Nations	H., 15	Julie P., 19
George, 2	W. C., 29	Paul, 28	Keturah, 18
Rebecca, 5, 6, 7	Neely	Oliver	Mary, 18
W. C., 40	C. H., 10	Joseph, 26	Mary T., 18
W. W., 39	S. J., 10	Oneal	Ora L., 18
Moffett	Nelson	John, 34	R. E., 19
William, 26	Charles, 34	Osborne	Robert, 18
Moon	Nesmith	James, 29	W. H., 19
Jane, 12	Thomas, 17	Osburn	William H., 4, 18
William A., 12	New	James, 34	Willie, 19
Moor	family, 22	Pain	Woody D., 18
John, 13	Rebecca, 22	Elizabeth, 12	Pasley
Lickly, 13	Newberry	Joseph, 12	H. W., 18
Tersey, 13	James, 38	Mary, 12	Mary, 18
Moore	Newcomb	Palmer	R. H., 25
Amanda, 7	Thomas, 34	David M., 34	W. H. Rev., 18
Edward W., 6, 9	Newman	Isaac, 36	Pate
L. B., 26	Esquire, 40	John J., 35	William J., 38
Solomon, 38	John, 34	King L., 34	Patrick
Morehead	Newton	Parker	John W., 31
R. H., 36	Leander, 6	L. C., 25	Patten
Morgan	Nichols	M. E., 14	Actor, 4
David, 36	A., 15	Moses, 26	Anna B., 4
George A., 40	H., 15	R. H., 25	Elizabeth, 4
John L., 40	J. J., 15	R. S., 37	Madeline M., 4
Morlock	John C., 15	Sam, 25	Otis, 4
John, 15	Nilson	Z. R., 25	Susannah, 4

William M., 4	W. H., 36	Raney	C. F., 30
Pattent	Phillips	C. F., 15	J., 16
Annah, 5	C. R., 14	David I., 35	W., 16
Isebullia, 5	H. W., 29	Reed	Rogers
Madline, 5	James L., 37	Joseph, 40	J., 16
Otis, 5	L., 14	Reeds	John, 37
Susan, 5	Pickett	William, 36	John N., 39
William, 5	W. J., 26	Reinhardt	Ross
Patterson	Pierce	R. H., 36	Alexander N., 40
William, 5	H. H., 17	Rendle	Row
William L., 5	John, 28	William C., 13	Joab, 28
Patton	Piggness	Renfrow	Rowland
Anna B., 7	Alfred, 36	R. P., 38	Millie E., 7, 9
Elizabeth C., 7	Platts	Reynolds	Thomas, 26
Madeline H., 7	Joseph, 38	P. J., 30	Rupum
Otis, 7	Polar	Sarah J., 41	Gerdaline, 18
Susan C., 7	Lewis, 17	Rhodes	Russell
Susan M., 7	Pool	Carolina, 7	Judy, 2
William M., 7	Washington, 35	Sarah F., 8	Samuel, 35
Payette	Powers	Rice	Ryan
Joseph, 28	Simmeon, 34	Mary, 11	William, 35
Payne	Prather	Oliver, 11	Ryon
Georgia A., 41	W. W., 39	Richards	John, 35
James K., 41	Prewett	J. E., 40	Safley
Peak	E., 15	William, 39	W. A., 17
Thomas C., 39	Price	Riffe	Salder
Peel	C. M., 15	Francina, 7	J. E., 38
John, 34	Jacob, 35	Francis, 8	Sanders
Richard, 34	Julia, 18	Right	James, 28
William, 35	S., 15	D., 14	Sarasin
Pelton	Proctor	Ripley	F. A., 39
William, 39	Jesse D., 40	John W., 10	Sawyers
Pennington	Pruett	Josephine, 10	William, 35
Calvin C., 40	C. D., 17	Louisa, 10	Scarboro
Sam, 38	Charles B., 6, 9	Thomas H., 10	Joseph, 37
Pentecost	Puckell	Ritchie	Scogin
Joseph, 31	A. N., 25	A. F., 26	W. H., 25
Penter	Pyburn	Robert	Scott
Martin, 34	Mac, 39	J. H., 14	Dr., 17
Perkins	Quals	Roberts	Thomas J., 40
E. W., 25	R. Q., 14	J. A., 29	Scroggins
Thomas, 39	Queiner	James Jr., 22	family, 41
Perry	J., 15	N. T., 38	Scruggs
J. T., 14	Quick	Robertson	Edward W., 31
Peters	William, 38	J. F., 15	Scuggins
George W., 38	Quinn	Robinson	Leroy, 37
Pevyhouse	J. E., 17	Georgia, 40	Seale
Nelson, 35	Rains	H. F., 29	J. T., 29
Phelps	A. H., 25	Rodgers	William, 30

Seay	Agnes, 7	F. E., 30	Swain
Thomas, 29	Single	Statcup	Moses, 39
Sehon	Jefferson, 37	Susan, 17	Swell
John, 26	Singleton	Steel	H., 15
Sells	Mrs., 26	T. C., 15	Tankersley
Henry, 37	Skillenger	William, 27	Charles W., 39
Sepp	William S., 8	Stegall	Tarvin
J. A., 29	Skinner	Dr., 17	R. S., 26
Sewell	Washington, 38	Stevens	Tate
James, 15	Skipper	family, 22	N. W., 36
Shaddon	Mary F., 42	W. M., 15	R. S., 39
Lewis, 35	Slaughter	Stevenson	Thomas W., 38
Shannon	James, 10	Samuel Rev., 13	William C., 35
B. P., 30	John, 10	Stevison	Taylor
Sharpe	Martha, 10	Mr., 17	J. N., 25
Catherine, 20	Thomas, 10	Stewart	John, 28
family, 22	slave	Jackson P., 12	Mr., 17
John, 20	Harreto, 20	Martha, 12	W. M., 14
Martha, 20	Philip, 20	Mary, 12	Wiley, 35
Shasteen	Sloan	W. S., 40	Telley
Jane, 12	Mrs., 26	Stokes	Frank, 17
Lauran, 12	Smaling	James, 35	Terry
Samuel, 12	W. H. Jr., 25	Story	family, 22
Samuel J., 12	Smith	Georgia A., 41	Thomas
Washington, 12	D. A., 17	Stringfellow &	Aaron, 12
Shaver	Diannah, 20	Teague, 27	Benjamin, 39, 40
J., 15	family, 22	Strong	Brogil, 38
Shilling	Henry S., 6, 9	J. B., 26	E. C., 13
family, 41	J. T., 30	W. J., 30	family, 22
Shinn	Jackson, 40	Stroud	George, 12
William K., 40	L. A., 29	James, 26	Isaac, 12
Shipp	Thomas M., 17	Stuart	John, 39
family, 41	W., 16	John, 17	Malinda, 12
Shockley	William F. Dr., 37	Mr., 17	Thompson
Sarah E., 5	Sofley	Stubblefield	C. N., 36
Shockly	A. W., 17	Jane, 20	J. J., 40
Lizza, 5	Sollis	Stutaman	J. L., 17
Shrum	W. H., 17	D., 14	William, 38
Elijah G., 32	Spain	Stutts	Thornton
Shuler	Mr., 17	John, 40	W. S., 27
J. N., 29	Spear	Suggs	Tillery
Shuttleworth	Saml., 26	Simeon, 40	L. B., 16
J. C., 29	St. Clair	Sumners	L. H., 16
Simmons	G. W., 15	Willis B., 26	W. C., 16
J. F. Dr., 38	Staggs	Sutherland	Tilman
Simpson	B. F., 30	James, 38	Ann E., 20
Hiram, 36	Stalcup	Sutton	Stephen, 20
L., 16	Mr., 17	C. E., 25	Tilston
Sinclair	Starns	J. H., 25	Alice, 11

Benjamin, 11	Mr., 17	T. A., 38	G. F., 25
Eliza, 11	Underwood	Waller	G. W., 25
John W., 11	Robert, 40	John S., 26	H. B., 25
Mary, 11	Valentine	Ward	J. W., 25
Matthew, 11	J., 15	Robert, 5	Louis, 6, 8
Sarah, 11	Vance	Robert G., 5	Whitehead
Titsworth	James M., 39	Ware	Mahalia, 12
E. N., 15	Vangine	Jemison, 26	Robert, 12
Toller	Francis, 28	Warren	Samuel T., 12
Mr., 17	Vaughan	D. B., 17	W., 14
Tomlinson	Frank T., 39	R. C., 40	Whittington
Perry, 27	John, 40	Warrer	W., 26
Toone	Vaught	W. M., 36	Wier
George W., 37	W. C., 25	Washington	B. C. Rev., 37
Torracs	Vestal	Stephen, 39	Wilborn
Samuel, 41	A. A., 29	Watt	Milton, 36
Tramick	Vick	Columbus, 11	Wilkins
George W., 38	Adaline, 10	J. F., 11	Mike, 17
Trice	James, 10	Martha J., 11	Williams
T. W., 37	John, 10	William P., 11	H., 30
Trigg	Vickers	Wayland	H. O., 36
Sabina C., 13	William, 35	James, 35	John, 36
Trimble	Virginia	Jarret, 31	Lewis, 10
Morget E., 31	Bush, 8	Wear	Martha, 6
Triplett	Wise, 6	Mrs., 17	Renel, 40
Richard C., 38	Vise	Weaver	Robert, 40
Trudeau	C. M., 38	Jonathan, 28	Sarah, 10
Baptist, 28	Waddle	Weeks	W. N., 25
Francis, 28	A., 16	L. W., 37	Williams.
John, 28	Wadkins	Welch	Collin, 37
Joseph, 28	Amanda S., 11	Bryant, 40	Williamson
Trulock	James, 11	Robert A., 25	James, 13
J. B., 39	John, 11	William W., 38	Sarah, 13
Tucker	Malvina, 11	Welton	Williford
John W., 38	W., 15	W., 15	Mr., 17
Tumer	Waldie	Westbrook	Wilson
John W., 37	S. H., 30	John R., 37	A. F., 25
Turley	Walker	Wheeler	Absolem, 35
Thomas S., 35	Asher, 26	Jonas, 6	B. F., 30
Turner	Charles, 40	Josiah, 9	Daniel, 35
A. J., 15	Diannah, 20	Whiddon	Edward, 35
Reese, 6, 9	family, 22	Alexander, 26	John S., 35
Turney	James, 20	Whisenhunt	Joseph, 35
Isham, 35	Jennett, 19	G. G., 25	William, 35
Tyler	S. R., 29	M. R., 25	William H., 39
John F., 6, 8	W. G., 27	White	Winfrey
Ulferd	Wallace	D. B. Jr., 25	J. F., 38
Berry, 39	C., 14	Dave, 25	Winton
Umstead	Joseph, 14	Eva R., 42	N. T., 15

Wise	J. M., 17	Stephen S., 20	Wyrick
H. J., 30	James F., 26	Wright	J. T., 29
J. N., 29	Mary, 12	C. L., 38	Yandel
N. J., 29	S. C., 40	James C., 38	W. W., 14
Virginia, 9	Sarah, 12	John, 28	Yarbough
Wolfe	W. M., 26, 27	Mary, 18	W. H., 25
James F., 39	Woodward	Wyatt	Young
Wollard	W. H., 29	Joseph S., 35	Harvey K., 36
Samuel D., 28	Workhman	Wyley	J., 16
Womack	W. H., 17	T., 30	John, 10
Henry, 39	Wotleredge	Wylie	Martha, 10
Wood	Jacob, 38	Antonia, 22	Zeachra
Benjamin, 12	Wray	Wyotte	Burr H., 35
Green, 12	Elizabeth C., 20	Joseph S., 35	



ARKANSAS GENEALOGICAL SOCIETY

A member of the National Genealogical Society, the Federation of Genealogical Societies, and Friends of the Arkansas State Archives

The Arkansas Genealogical Society dates from 1962 and is incorporated as a non-profit organization. The purpose of this society is to promote genealogy, to educate its members and others in genealogical research, to publish articles pertaining to Arkansas ancestors, and to locate and preserve genealogical, historical, and biographical information and records.

Disclaimer

Neither the Arkansas Genealogical Society (AGS), its individual members, nor its editors assume any responsibility for statements, whether of fact or opinion, made by contributors to this publication.

Membership

Any person interested in genealogy is encouraged to become a member by payment of \$25.00 dues in advance for one year. This includes a year's subscription to the society's periodical. Make your check or money order payable to AGS, PO Box 26374, Little Rock, AR 72221-6374.

Back Issues

Many back issues of *The Arkansas Family Historian* are available on the AGS web site, www.agsgenealogy.org. Hard copies of selected recent back issues may be purchased for \$5.00 each while supplies last. Mail your request to AGS, PO Box 26374, Little Rock, AR 72221-6374.

Research Policy

The society regrets that we are unable to provide research for members. We do suggest that anyone wanting fee-based research refer to the Association of Professional Genealogists website for a list of researchers at www.apgen.org.

Book Reviews

Authors and publishers may submit books for review in *The Arkansas Family Historian*. Send review copies to AGS, PO Box 26374, Little Rock, AR 72221-6374. All materials become the property of AGS to be distributed to repositories as the society deems appropriate or the submitter requests.

Queries

Members may submit queries related to Arkansas ancestors to be published in *The Arkansas Family Historian*. Send queries by e-mail to Publications@agsgenealogy.org or mail them to AGS Queries, PO Box 26374, Little Rock, AR 72221-6374. Be sure to include your name, address, e-mail address, and phone number.

Submissions

Please submit articles, abstracts, transcripts, indexes, Bible records, and other material to be considered for publication. Photographs and materials will not be returned. Sources should be cited as footnotes. Materials may be submitted by e-mail to Publications@agsgenealogy.org or on paper or electronic media to AGS, PO Box 26374, Little Rock, AR 72221-6374. The right to edit all material submitted is reserved. The submitter should include name, address, phone number, and e-mail address with the material. Proof copies may be sent prior to printing if requested.

Contributions

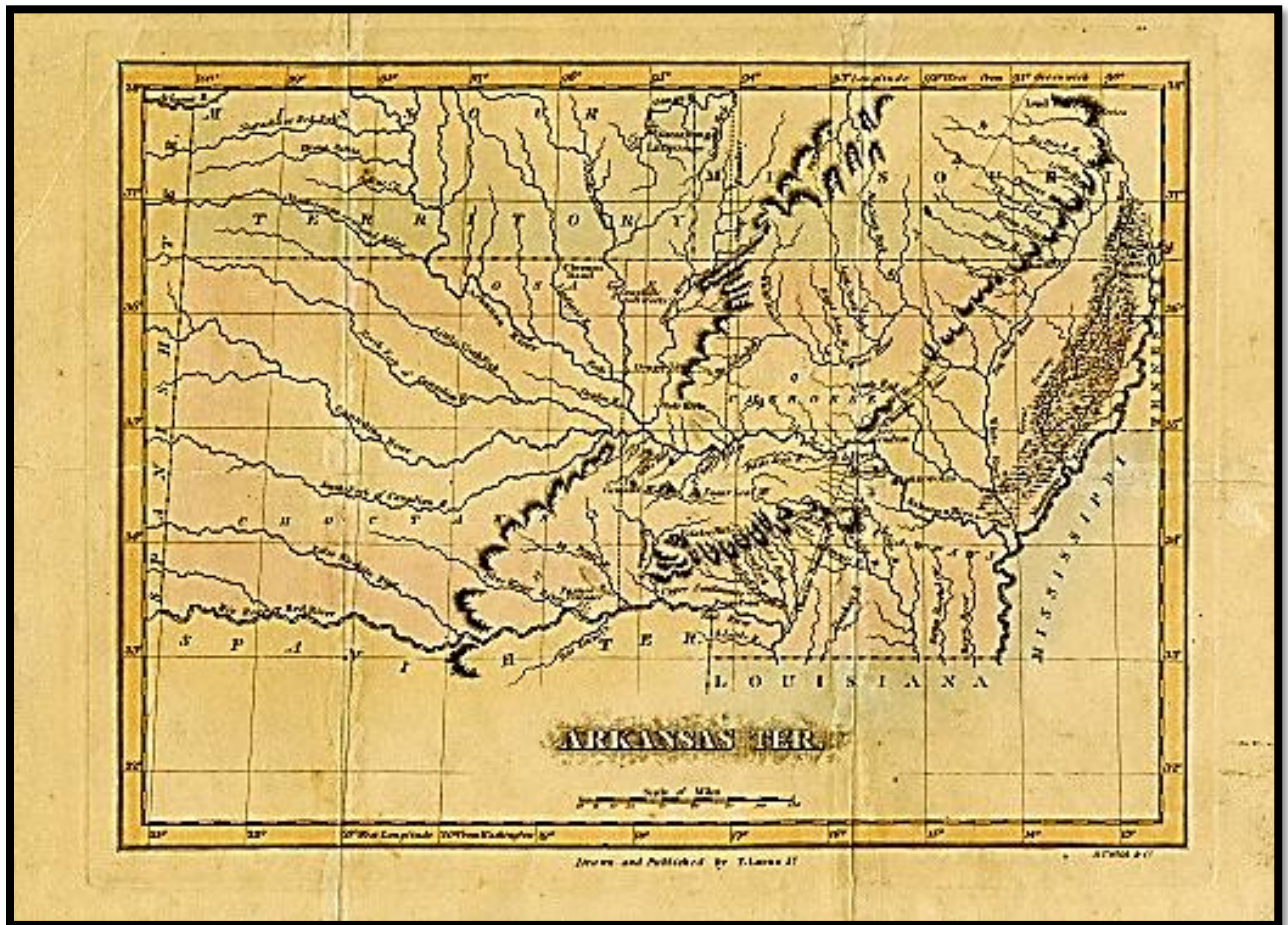
AGS qualifies as a tax-exempt organization as stated in Section 501(c) (3) of the Internal Revenue Code of 1986. Any donations of books, funds and other property to the society are tax deductible.

Change of Address

Please notify AGS with your change of address or a mistake in address as soon as possible. Contact us by e-mail at Membership@agsgenealogy.org or AGS, PO Box 26374, Little Rock, AR 72221-6374.



Map of Arkansas Territory, Circa 1820s



From the collections of the Arkansas State Archives in Little Rock.

Arkansas Genealogical Society
P.O. Box 26374
Little Rock, AR 72221-6374

Address Service Requested

Non-Profit
Organization
U.S. Postage
PAID
Little Rock, AR
Permit No. 30

ISSN 0571-0472